

| | | |
|---|------------------------|--|
| VORTAC HLN 117.7 Chan 124 | APP CRS 270° | Rwy Idg TDZE Apt Elev N/A N/A 3877 |
|---|------------------------|--|

VOR-B

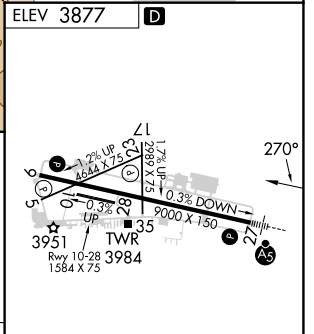
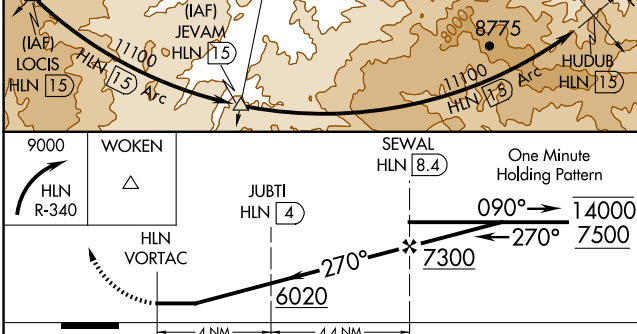
HELENA RGNL (HLN)

DME required.

⚠ Circling NA to Rwys 10 and 28. Circling NA for Cat D south of Rwy 9-27. Circling Rwy 5, 23, 35 NA at night. Rwy 5, 23, 35 helicopter visibility reduction below 1 SM NA. DME Arc to final approach course required for turbojet aircraft.
❄ -17°C
 Holding at SEWAL authorized for Cat A and B aircraft only.

MISSED APPROACH: Climbing right turn to 9000 on HLN VORTAC R-340 to WOKEN INT/GTF 37.7 DME and hold.

| | | | | |
|----------------------|--|---|-------------------------|-------------------------|
| ATIS 120.4 | HELENA APP CON * 119.5 229.4 | HELENA TOWER * 118.3 (CTAF) 257.8 | GND CON 121.9 | UNICOM 122.95 |
|----------------------|--|---|-------------------------|-------------------------|



| CATEGORY | A | B | C | D |
|-------------------|-------------------------|--------------------------|--------|---------------|
| C CIRCLING | 4760-1¼ 883 (900-1¼) | 4800-1¼ 923 (1000-1¼) | 6000-3 | 2123 (2200-3) |

REIL Rws 9, 17, and 35
 MIRL Rws 5-23 and 17-35
 HIRL Rwy 9-27

NW-1, 20 FEB 2025 to 20 MAR 2025

NW-1, 20 FEB 2025 to 20 MAR 2025