

BORRN SIX DEPARTURE (RNAV)  
(BORRN6.BORRN) 30NOV23

HOUSTON, TEXAS  
ELLINGTON (E/F/D)

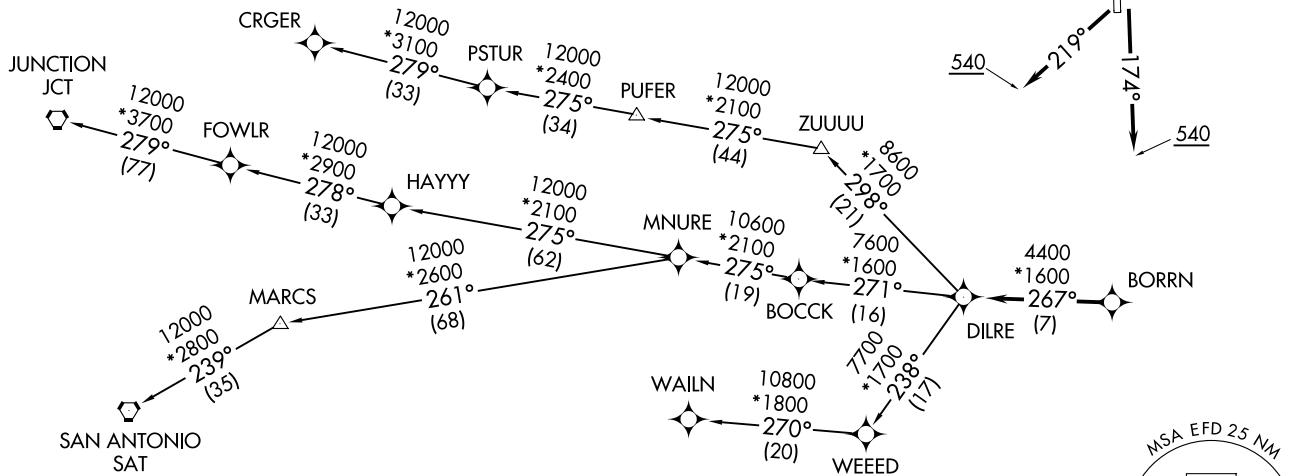
ATIS  
135.575 269.9  
GND CON  
121.6 275.8  
ELLINGTON TOWER  
126.05 253.5  
HOUSTON DEP CON  
134.45 284.0

RNAV 1 - DME/DME/IRU or GPS.

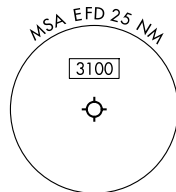
RADAR required.

**TOP ALTITUDE:  
ASSIGNED BY ATC**

**TAKEOFF MINIMUMS**  
Rwys 4, 17L/R, 22, 35L/R:  
Standard with minimum  
climb of 500'/NM to 540.



NOTE: CRGER-TRANSITION ATC assigned only for aircraft departing 54T, AXH, EFD, GLS, HPY, IWS, LBX, LVJ, SGR, TME, TØØ, T41.



NOTE: Chart not to scale.

(CONTINUED ON FOLLOWING PAGE)

(BORRN6.BORRN) 25051  
BORRN SIX DEPARTURE (RNAV)

AL-197 (FAA)

HOUSTON, TEXAS  
ELLINGTON (E/F/D)

# BORRN SIX DEPARTURE (RNAV)



## DEPARTURE ROUTE DESCRIPTION

TAKEOFF RUNWAY 4: Climb on heading 039° to 540, for RADAR vectors to BORRN, thence. . . .

TAKEOFF RUNWAYS 17L/R: Climb on heading 174° to 540, for RADAR vectors to BORRN, thence. . . .

TAKEOFF RUNWAY 22: Climb on heading 219° to 540, for RADAR vectors to BORRN, thence. . . .

TAKEOFF RUNWAYS 35L/R: Climb on heading 354° to 540, for RADAR vectors to BORRN, thence. . . .

. . . .on track 267° to DILRE, then on (transition). Maintain ATC assigned altitude. Expect filed altitude 10 minutes after departure.

CRGER TRANSITION (BORRN6.CRGER)

JUNCTION TRANSITION (BORRN6.JCT)

MNURE TRANSITION (BORRN6.MNURE)

SAN ANTONIO TRANSITION (BORRN6.SAT)

WAILN TRANSITION (BORRN6.WAILN)

SC-5, 20 FEB 2025 to 20 MAR 2025

SC-5, 20 FEB 2025 to 20 MAR 2025