

HOUSTON, TEXAS

HI-ILS Y or LOC Y RWY 17R

LOC I-LPV 110.3	APCH CRS 174°	Rwy Idg 9001
		TDZE 32
		Arprt Elev 33

AL-197 [USAF]

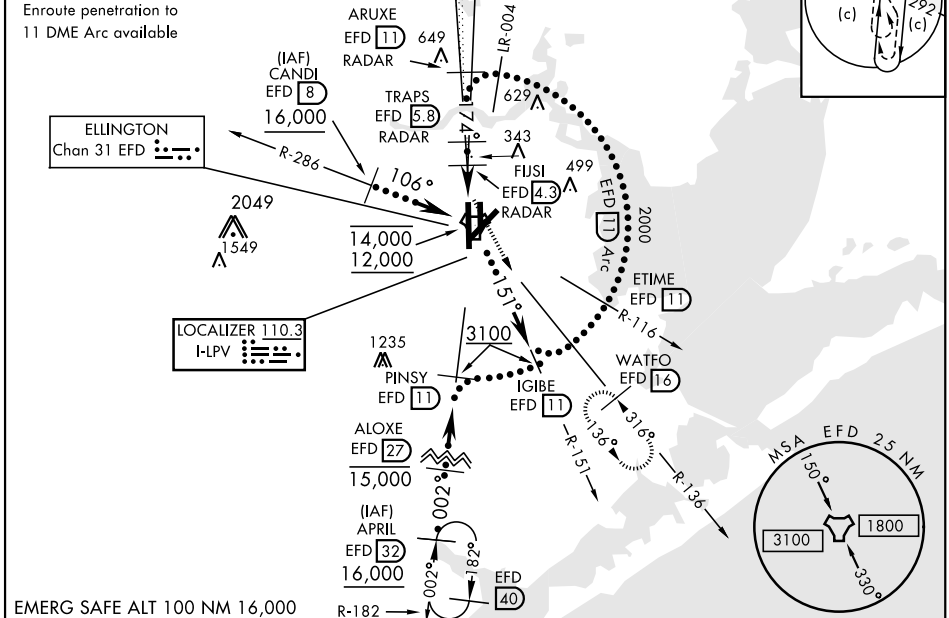
ELLINGTON (KEFD)

DME required. RADAR required for procedure entry.
 * When ALS inop, increase CAT CDE vis to 1 3/8 miles.
 ** Circling not authorized W of Rwy 17R-35L.

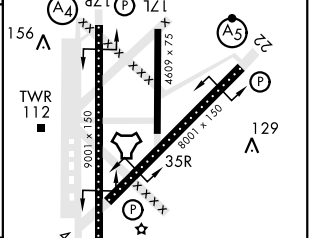
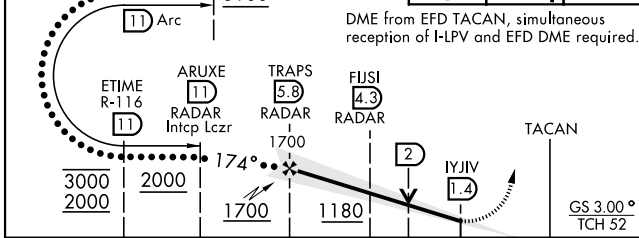
MALSF MISSED APPROACH: Climb to 700 then climbing left turn to 3100 on EFD TACAN R-136 to WATFO/EFD 16 DME and hold.

ATIS 135.575 269.9	HOUSTON APP CON 134.45 284.0	TOWER 126.05 253.5	GND CON 121.6 275.8
------------------------------	--	------------------------------	-------------------------------

EFD TACAN	N29°36.36' W95°09.58'
CANDI	N29°39.24' W95°18.17'
APRIL	N29°04.53' W95°14.05'
WATFO	N29°23.90' W94°58.07'



EMERG SAFE ALT 100 NM 16,000	R-182 →	700	3100	WATFO EFD 16	ELEV 33	TDZE 32
------------------------------	---------	-----	------	--------------	---------	---------



CATEGORY	C	D	E
S-ILS 17R	232/40	200	(200-3/4)
S-LOC 17R*	480/50	448	(500-1)
CIRCLING**	580-1 1/2 547 (600-1 1/2)	640-2 607 (700-2)	700-2 1/4 667 (700-2 1/4)

HIRL Rwy 4-22 and 17R-35L
 TDZL/CL Rwy 17R, 22 and 35L

HOUSTON, TEXAS
 Amdt 4B 15AUG19

29° 36' N-95° 10' W

ELLINGTON (KEFD)

HI-ILS Y or LOC Y RWY 17R

SC-5, 20 FEB 2025 to 20 MAR 2025

SC-5, 20 FEB 2025 to 20 MAR 2025