

HI-TACAN RWY 17R

TACAN EFD Chan 31	APCH CRS 163°	Rwy Idg TDZE Arprt Elev 9001 32 33
--------------------------	----------------------	---

AL-197 [USAF]

ELLINGTON (KEFD)

RADAR required for procedure entry.

MALSF (A4)

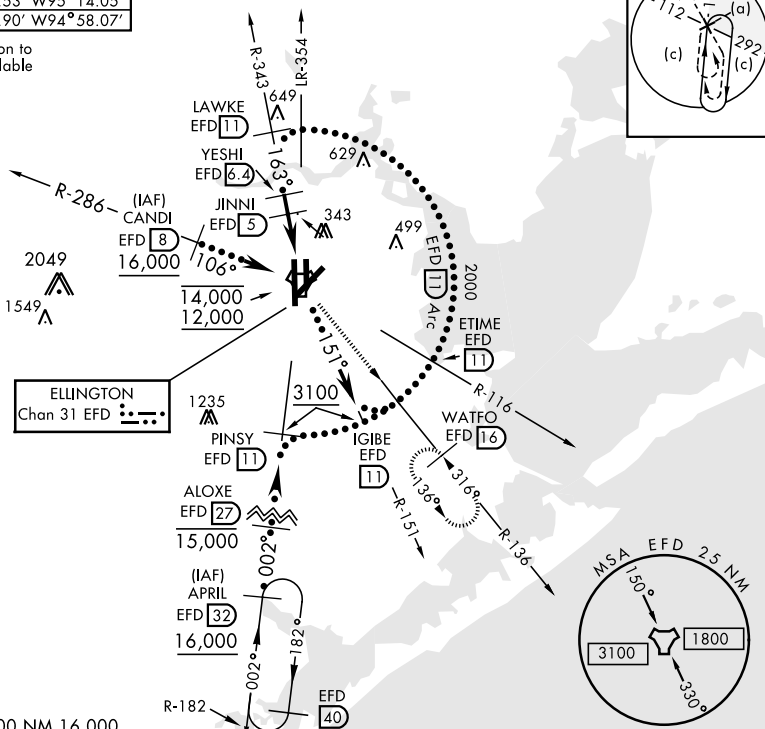
MISSED APPROACH: Climbing left turn to 3100 on EFD TACAN R-136 to WATFO/EFD 16 DME and hold.

* When ALS inop, increase CAT CDE vis to 1 1/2 miles.
 ** Circling not authorized W of Rwy 17R-35L.

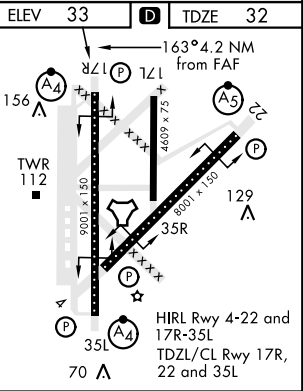
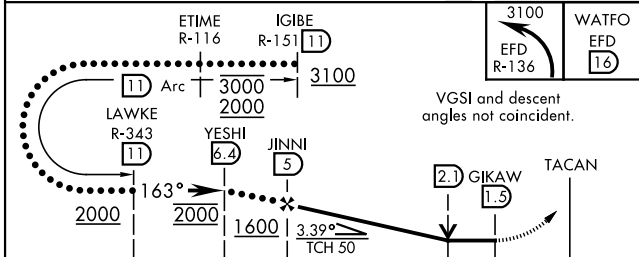
ATIS 135.575 269.9	HOUSTON APP CON 134.45 284.0	TOWER 126.05 253.5	GND CON 121.6 275.8
------------------------------	--	------------------------------	-------------------------------

EFD TACAN	N29°36.36' W95°09.58'
CANDI	N29°39.24' W95°18.17'
APRIL	N29°04.53' W95°14.05'
WATFO	N29°23.90' W94°58.07'

Enroute penetration to 11 DME Arc available



EMERG SAFE ALT 100 NM 16,000



CATEGORY	C	D	E
S-17R *	500/60	468	(500-1 1/2)
CIRCLING **	580-1 1/2 547 (600-1 1/2)	640-2 607 (700-2)	700-2 1/4 667 (700-2 1/4)

HI-TACAN RWY 17R

SC-5, 20 FEB 2025 to 20 MAR 2025

SC-5, 20 FEB 2025 to 20 MAR 2025