

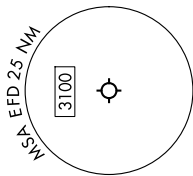
# MMALT SEVEN DEPARTURE (RNAV)

SC-5, 20 FEB 2025 to 20 MAR 2025

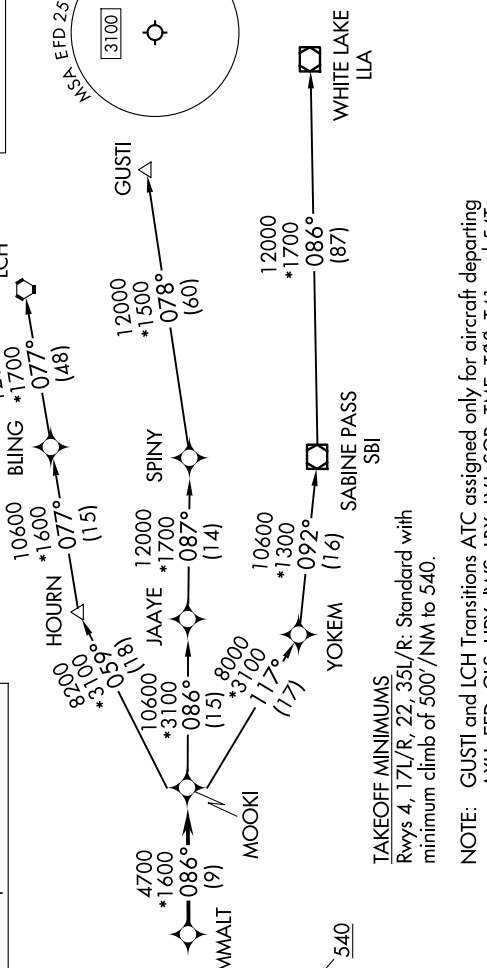
RNAV 1 - DME/DME/IRU or GPS.

RADAR required.

HOUSTON DEP CON  
134.45 284.0  
ATIS  
135.575 269.9  
GND CON  
121.6 275.8  
ELLINGTON TOWER  
126.05 253.5



TOP ALTITUDE:  
ASSIGNED BY ATC



### TAKEOFF MINIMUMS

Rwys 4, 17L/R, 22, 35L/R: Standard with minimum climb of 500'/NM to 540.

NOTE: GUSTI and LCH Transitions ATC assigned only for aircraft departing AXH, EFD, GLS, HPY, IWS, LBX, LVJ, SGR, TME, T00, T41 and 541.

NOTE: Chart not to scale.

### DEPARTURE ROUTE DESCRIPTION

- TAKEOFF RUNWAY 4: Climb on heading 039° to 540, for RADAR vectors to MMALT, thence. . . .
- TAKEOFF RUNWAYS 17L/R: Climb on heading 174° to 540, for RADAR vectors to MMALT, thence. . . .
- TAKEOFF RUNWAY 22: Climb on heading 219° to 540, for RADAR vectors to MMALT, thence. . . .
- TAKEOFF RUNWAYS 35L/R: Climb on heading 354° to 540, for RADAR vectors to MMALT, thence. . . .

. . . on track 086° to MOOKI, then on (transition). Maintain ATC assigned altitude. Expect filed altitude 10 minutes after departure.

- GUSTI TRANSITION (MMALT7.GUSTI)
- LAKE CHARLES TRANSITION (MMALT7.LCH)
- WHITE LAKE TRANSITION (MMALT7.LLA)

# MMALT SEVEN DEPARTURE (RNAV)

SC-5, 20 FEB 2025 to 20 MAR 2025