

|   |                        |   |
|---|------------------------|---|
| LOC/DME I-HUB<br><b>109.9</b><br>Chan <b>36</b> | APP CRS<br><b>041°</b> | Rwy Idg <b>7602</b><br>TDZE <b>44</b><br>Apt Elev <b>46</b> |
|---|------------------------|---|

# ILS RWY 4 (CAT II & III)

WILLIAM P HOBBY (HOU)

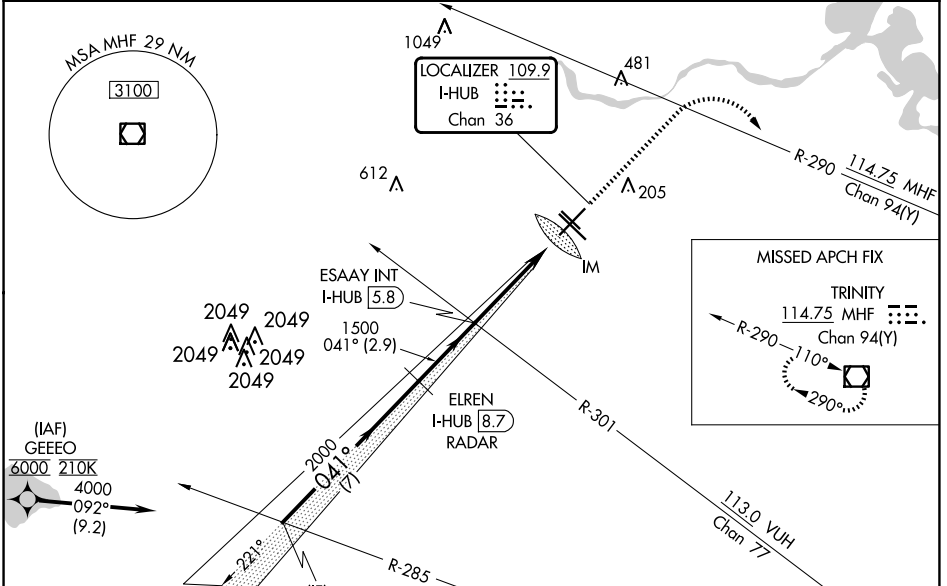
Aircraft not GPS equipped - RADAR required for procedure entry.  
From GEEEO: RNAV 1- GPS required.

**ALSF-2**

**MISSED APPROACH:** Climb to 1500 then climbing right turn to 3000 on MHF VOR/DME R-290 to MHF VOR/DME and hold.

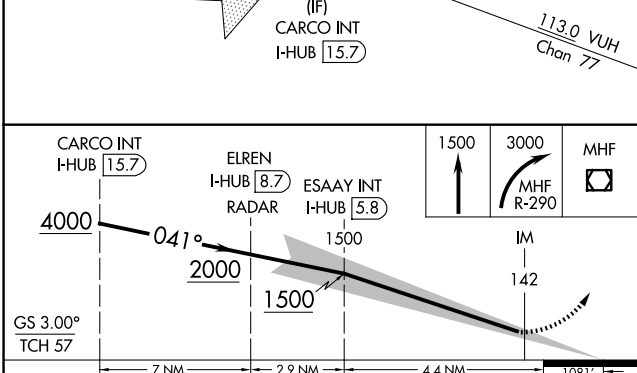
**CAT II:** RVR 1000 authorized with specific OPSPEC, MSPEC, or LOA approval and use of autoland or HUD to touchdown.

|                        |  |  |                         |                           |       |
|------------------------|--|--|-------------------------|---------------------------|-------|
| D-ATIS<br><b>124.6</b> | HOUSTON APP CON<br><b>120.05 379.1 EAST</b><br><b>124.35 316.15 WEST</b> | <b>HOBBY TOWER</b><br><b>118.7 256.9</b> | GND CON<br><b>121.9</b> | CLNC DEL<br><b>125.45</b> | CPDLC |
|------------------------|--|--|-------------------------|---------------------------|-------|

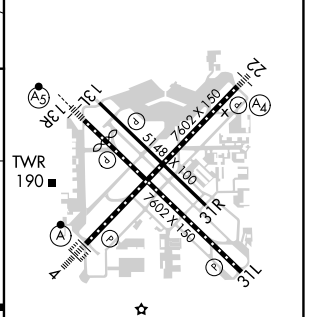


SC-5, 20 FEB 2025 to 20 MAR 2025

SC-5, 20 FEB 2025 to 20 MAR 2025



|         |          |         |
|---------|----------|---------|
| ELEV 46 | <b>D</b> | TDZE 44 |
|---------|----------|---------|



|          |                  |   |            |   |
|----------|------------------|---|------------|---|
| CATEGORY | A                | B | C          | D |
| S-ILS 4  | CAT II RA 100/12 |   | 100 DA 144 |   |
| S-ILS 4  | CAT III          |   | RVR 06     |   |

## CATEGORY II & III ILS - SPECIAL AIRCREW & AIRCRAFT CERTIFICATION REQUIRED

REIL Rwy 31L  
MIRL Rwy 13L-31R  
HIRL Rwy 4-22 and 13R-31L  
TDZ/CL Rwy 4, 13R and 31L