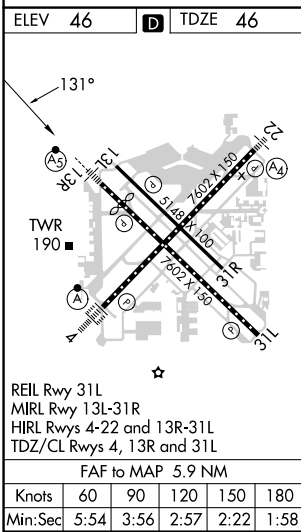
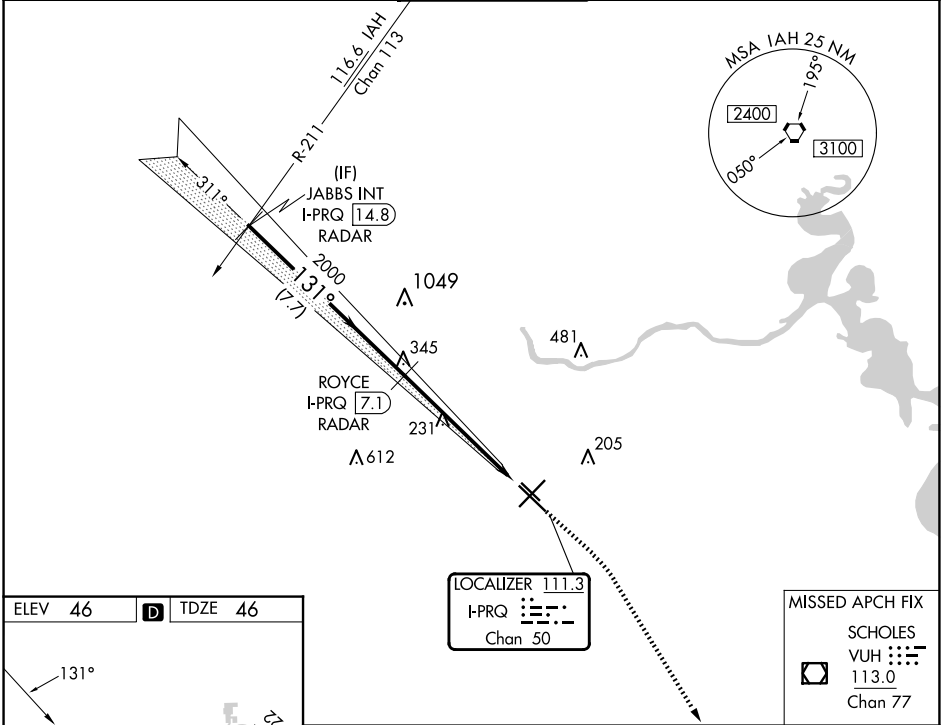


|   |                        |   |
|---|------------------------|---|
| LOC/DME I-PRQ<br><b>111.3</b><br>Chan <b>50</b> | APP CRS<br><b>131°</b> | Rwy Idg <b>6568</b><br>TDZE <b>46</b><br>Apt Elev <b>46</b> |
|---|------------------------|---|

# ILS or LOC RWY 13R

WILLIAM P HOBBY (HOU)

|  |  |                                   |  |                           |       |
|--|--|-----------------------------------|--|---------------------------|-------|
| RADAR or DME required for LOC only.<br>RADAR required for procedure entry.   |  | MALSR<br>                         | MISSED APPROACH: Climb to 800 then climbing right turn to 2200 direct VUH VOR/DME. |                           |       |
| <p><b>▼</b> Inop table does not apply to S-ILS Rwy 13R. Rwy 13R helicopter visibility reduction below 3/4 SM NA. For inop ALS, increase S-LOC 13R Cats A/B visibility to RVR 5500, Cats C/D/E to 1 3/4 SM.</p> <p><b>▲</b></p> |  |                                   |  |                           |       |
| D-ATIS<br><b>124.6</b>   | HOUSTON APP CON<br><b>120.05 379.1</b> EAST<br><b>124.35 316.15</b> WEST | HOBBY TOWER<br><b>118.7 256.9</b> | GND CON<br><b>121.9</b>  | CLNC DEL<br><b>125.45</b> | CPDLC |



|  |                         |               |           |                 |                           |
|--|-------------------------|---------------|-----------|-----------------|---------------------------|
| JABBS INT I-PRQ 14.8 RADAR<br>ROYCE I-PRQ 7.1 RADAR<br>2000<br>GS 3.00° TCH 49<br>2000<br>2000<br>7.7 NM    4.5 NM    1.4 NM | 800                     | 2200          | VUH       |                 |                           |
|  |                         |               |           |                 |                           |
|  | * I-PRQ 2.6             | * LOC only    | I-PRQ 1.3 |                 |                           |
| CATEGORY   | A                       | B             | C         | D               | E                         |
| S-ILS 13R  | 296/40    250 (300-3/4) |               |           |                 |                           |
| S-LOC 13R  | 540/40                  | 494 (500-3/4) | 540/50    | 494 (500-1)     | 540/60<br>494 (500-1 1/4) |
| <b>C</b> CIRCLING  | 540-1                   | 494 (500-1)   | 740-2 1/4 | 694 (700-2 1/4) | 860-3<br>814 (900-3)      |

SC-5, 20 FEB 2025 to 20 MAR 2025

SC-5, 20 FEB 2025 to 20 MAR 2025