

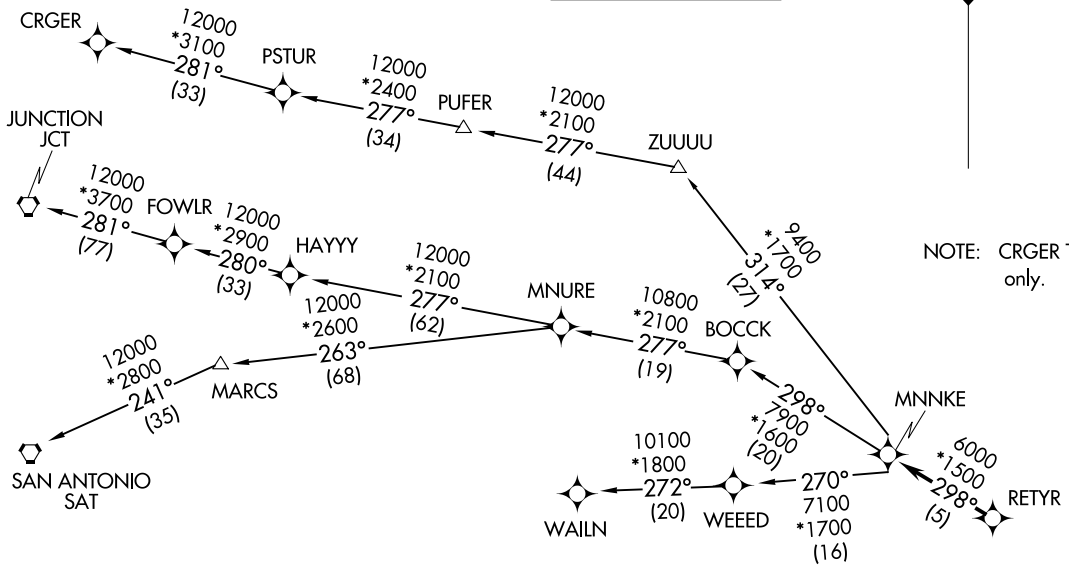
RNAV 1 - DME/DME/IRU or GPS.  
 RADAR required.

**TOP ALTITUDE:  
 16000**

- D-ATIS 124.6
- CLNC DEL 125.45
- CPDLC 121.9
- GND CON 121.9
- HOBBY TOWER 118.7 256.9
- HOUSTON DEP CON 126.675 339.8

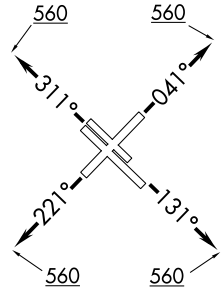


NOTE: CRGER Transition ATC assigned only.



**TAKEOFF MINIMUMS**

Rwys 4, 13L/R, 31L/R: Standard with minimum climb of 500' per NM to 560.  
 Rwy 22: Standard with minimum climb of 500' per NM to 800.



NOTE: Chart not to scale.

(CONTINUED ON FOLLOWING PAGE)

RETYR EIGHT DEPARTURE (RNAV)  
 (RETYR8, RETYR) 03NOV22

(RETYR8, RETYR) 25051  
 AL-198 (FAA)

WILLIAM P HOBBY (E10U)  
 HOUSTON, TEXAS

WILLIAM P HOBBY (E10U)  
 HOUSTON, TEXAS

# RETYR EIGHT DEPARTURE (RNAV)



## DEPARTURE ROUTE DESCRIPTION

TAKEOFF RUNWAY 4: Climb on heading 041° to 560, expect RADAR vectors to RETYR, thence . . . .

TAKEOFF RUNWAYS 13L/R: Climb on heading 131° to 560, expect RADAR vectors to RETYR, thence . . . .

TAKEOFF RUNWAY 22: Climb on heading 221° to 560, expect RADAR vectors to RETYR, thence . . . .

TAKEOFF RUNWAYS 31L/R: Climb on heading 311° to 560, expect RADAR vectors to RETYR, thence . . . .

. . . . on track 298° to MNNKE, then on (transition). Maintain 16000, expect filed altitude 10 minutes after departure.

CRGR TRANSITION (RETYR8.CRGR)

JUNCTION TRANSITION (RETYR8.JCT)

MNURE TRANSITION (RETYR8.MNURE)

SAN ANTONIO TRANSITION (RETYR8.SAT)

WAILN TRANSITION (RETYR8.WAILN)

SC-5, 20 FEB 2025 to 20 MAR 2025

SC-5, 20 FEB 2025 to 20 MAR 2025