

LOC/DME I-FVJ 111.15 Chan 48 (Y)	APP CRS 230°	Rwy Idg 10000 TDZE 790 Apt Elev 796
--	------------------------	--

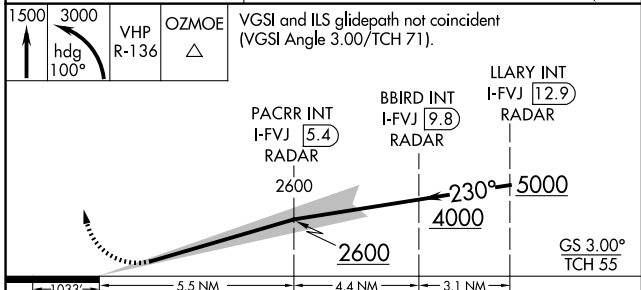
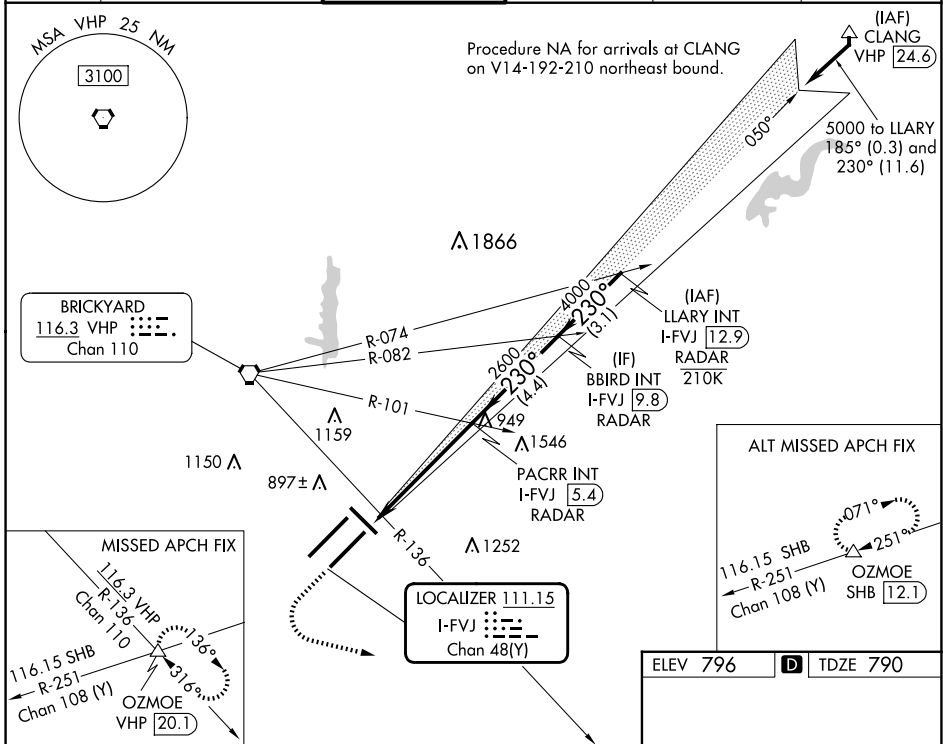
ILS RWY 23L (SA CAT II)

INDIANAPOLIS INTL (IND)

Simultaneous approach authorized. Requires specific OPSPEC, MSPEC, or LOA approval.

MALSRR MISSED APPROACH: Climb to 1500 then climbing left turn to 3000 on heading 100° and on VHP VORTAC R-136 to OZMOE INT/VHP 20.1 DME and hold.

D-ATIS 134.25	INDIANAPOLIS APP CON 128.175 317.8	INDY TOWER 120.9 251.1	GND CON 121.9	CLNC DEL 128.75 251.1	CPDLC
-------------------------	--	----------------------------------	-------------------------	---------------------------------	-------



1033	5.5 NM	4.4 NM	3.1 NM	
CATEGORY	A	B	C	D
S-ILS 23L	RA 105/12		100 DA 890	

SA CATEGORY II ILS- SPECIAL AIRCREW & AIRCRAFT CERTIFICATION REQUIRED

ELEV 796 **D** TDZE 790

HIRL all Rwys
TDZ/CL Rwys 5L and 5R

EC-2, 20 FEB 2025 to 20 MAR 2025

EC-2, 20 FEB 2025 to 20 MAR 2025