

LOC/DME I-FVJ <b>111.15</b> Chan 48 (Y)	APP CRS <b>230°</b>	Rwy Idg TDZE Apt Elev	<b>10000</b> <b>790</b> <b>796</b>
---	------------------------	-----------------------------	--

# ILS or LOC RWY 23L

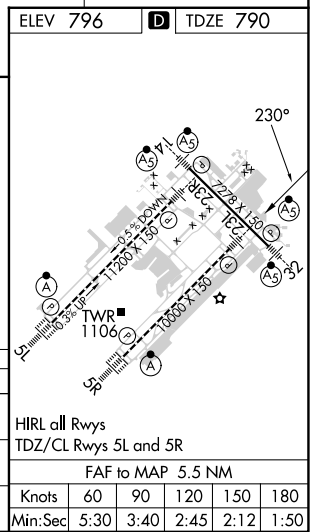
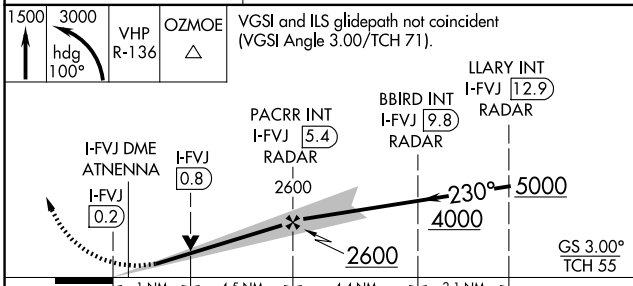
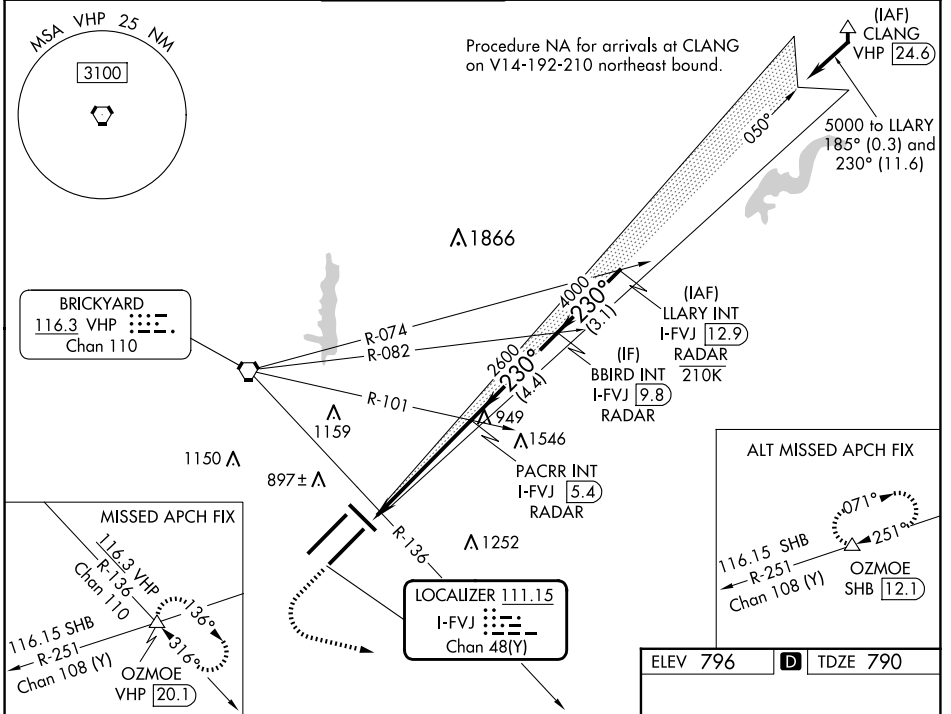
INDIANAPOLIS INTL (IND)

**Simultaneous approach authorized.**  
 \* RVR 1800 authorized with use of FD or AP or HUD to DA.

**MALSR** 

**MISSED APPROACH:** Climb to 1500 then climbing left turn to 3000 on heading 100° and on VHP VORTAC R-136 to OZMOE INT/VHP 20.1 DME and hold.

D-ATIS <b>134.25</b>	INDIANAPOLIS APP CON <b>128.175 317.8</b>	INDY TOWER <b>120.9 251.1</b>	GND CON <b>121.9</b>	CLNC DEL <b>128.75 251.1</b>	CPDLC
-------------------------	--	----------------------------------	-------------------------	---------------------------------	-------



CATEGORY	A	B	C	D
S-ILS 23L *	990/24		200 (200-½)	
S-LOC 23L	1180/24	390 (400-½)	1180/35	390 (400-¾)
<b>C</b> CIRCLING	1420-1	624 (700-1)	1420-1¾ 624 (700-1¾)	1560-2½ 764 (800-2½)

EC-2, 20 FEB 2025 to 20 MAR 2025

EC-2, 20 FEB 2025 to 20 MAR 2025