

LOC/DME I-QOQV 111.15 Chan 48(Y)	APP CRS 050°	Rwy ldg 10000 TDZE 791 Apt Elev 796
---	------------------------	--

ILS or LOC RWY 5R

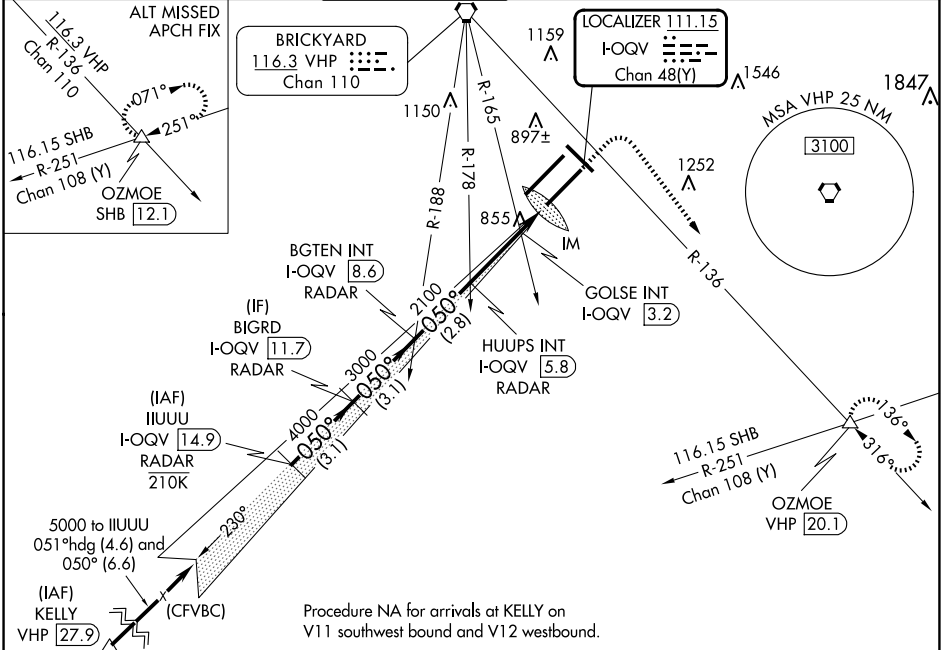
INDIANAPOLIS INTL (IND)

⚠ DME or RADAR required. Simultaneous approach authorized.

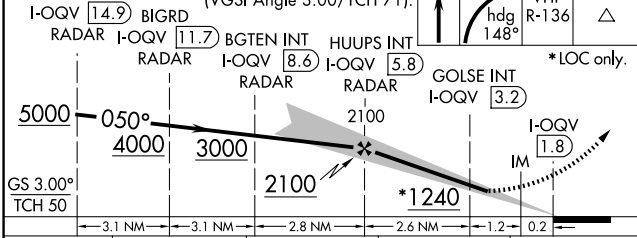
Ⓜ ALSF-2

⚠ MISSED APPROACH: Climb to 1500 then climbing right turn to 3000 on heading 148° and on VHP VORTAC R-136 to OZMOE INT/VHP 20.1 DME and hold.

D-ATIS 134.25	INDIANAPOLIS APP CON 128.175 317.8	INDY TOWER 120.9 251.1	GND CON 121.9	CLNC DEL 128.75 251.1	CPDLC
-------------------------	--	----------------------------------	-------------------------	---------------------------------	-------



Procedure NA for arrivals at KELLY on V11 southwest bound and V12 westbound.



I-UUUU I-QOQV 14.9	BIGRD I-QOQV 11.7	BGTEN INT I-QOQV 8.6	HUUPS INT I-QOQV 5.8	GOLFSE INT I-QOQV 3.2	I-QOQV 1.8	OZMOE VHP R-136	ELEV 796	TDZE 791
*LOC only.								
CATEGORY		A	B	C	D			
S-ILS 5R		991/18			200 (200-½)			
S-LOC 5R		1240/24	449 (500-½)	1240/45	449 (500-¾)			
CIRCLING		1420-1	624 (700-1)	1420-1¾ 624 (700-1¾)	1560-2½ 764 (800-2½)			
GOLFSE FIX MINIMUMS (DUAL VOR RECEIVERS or DME REQUIRED)								
S-LOC 5R		1160/24	369 (400-½)	1160/35	369 (400-¾)			
CIRCLING		1420-1	624 (700-1)	1420-1¾ 624 (700-1¾)	1560-2½ 764 (800-2½)			
Knots		45	60	75	90	105		
Min:Sec		5:20	4:00	3:12	2:40	2:17		

EC-2, 20 FEB 2025 to 20 MAR 2025

EC-2, 20 FEB 2025 to 20 MAR 2025