

INDY TWO DEPARTURE

AL-203 (FAA)

INDIANAPOLIS INTL (IND)
INDIANAPOLIS, INDIANA

D-ATIS 134.25
CLNC DEL
128.75 251.1
CPDLC
GND CON
121.9
INDY TOWER
120.9 251.1
INDIANAPOLIS DEP CON
124.95 317.8 (EAST)
119.05 317.8 (WEST)

RADAR required.

TOP ALTITUDE:
(JETS) 5000
(PROPS) 3000

BOILER
115.1 BVT
Chan 98

MARION
108.6 MZZ
Chan 23

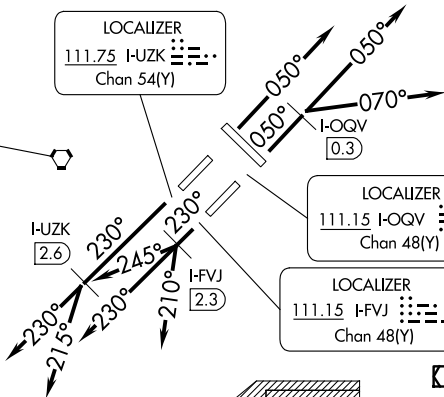
ROSEWOOD
117.5 ROD
Chan 122

CHAMPAIGN
115.75 CMI
Chan 104(Y)

LOCALIZER
111.75 I-UZK
Chan 54(Y)

BRICKYARD
116.3 VHP
Chan 110

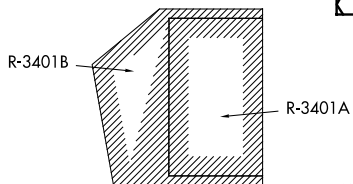
TERRE HAUTE
115.3 TTH
Chan 100



LOCALIZER
111.15 I-OQV
Chan 48(Y)

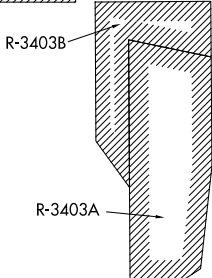
DAYTON
114.5 DGN
Chan 92

LOCALIZER
111.15 I-FVJ
Chan 48(Y)

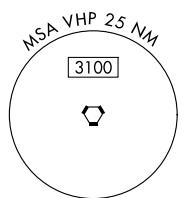


SHELBYVILLE
116.15 SHB
Chan 108 (Y)

HOOSIER
110.2 OOM
Chan 39



POCKET CITY
113.3 PXV
Chan 80



TAKEOFF MINIMUMS:

Rwy 5L/R, 14, 23L/R, 32: Standard.

NOTE: Select appropriate localizer/DME frequency/channel prior to departure.
NOTE: Jet aircraft accelerate to 250K until reaching 10000. If unable advise ATC.

(CONTINUED ON FOLLOWING PAGE)

NOTE: Chart not to scale.

EC-2, 20 FEB 2025 to 20 MAR 2025

EC-2, 20 FEB 2025 to 20 MAR 2025



DEPARTURE ROUTE DESCRIPTION

TAKEOFF RUNWAY 5R (JETS ONLY-DME REQUIRED): Climb on heading 050° to I-OQV 0.3 DME, then on assigned heading 050° or 070°. Maintain 5000.

Thence

TAKEOFF RUNWAY 5L (JETS ONLY): Climb on heading 050°. Maintain 5000.

Thence

TAKEOFF RUNWAY 23R (JETS ONLY-DME REQUIRED): Climb on heading 230° to I-UZK 2.6 DME, then on assigned heading 230° or 215°. Maintain 5000.

Thence....

TAKEOFF RUNWAY 23L (JETS ONLY-DME REQUIRED): Climb on heading 230° to I-FVJ 2.3 DME, then on assigned heading 210°, 230°, or 245°. Maintain 5000.

Thence....

TAKEOFF ALL OTHER RUNWAYS (JETS ONLY): Climb on assigned heading.

Maintain 5000. Thence....

TAKEOFF ALL RUNWAYS (PROPS ONLY): Climb on assigned heading.

Maintain 3000. Thence....

....RADAR vectors to assigned route/fix. Expect clearance to filed altitude 10 minutes after departure.

EC-2, 20 FEB 2025 to 20 MAR 2025

EC-2, 20 FEB 2025 to 20 MAR 2025