

APP CRS	Rwy Idg	<b>11200</b>
<b>050°</b>	TDZE	<b>747</b>
	Apt Elev	<b>796</b>

# RNAV (RNP) Z RWY 5L

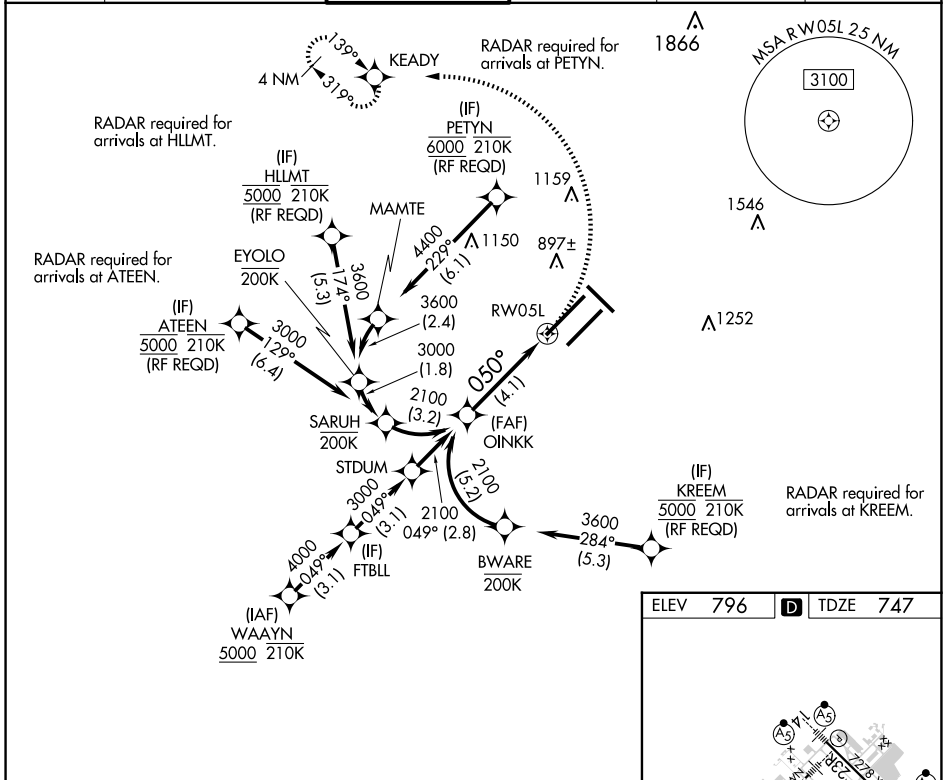
INDIANAPOLIS INTL (IND)

▼ For uncompensated Baro-VNAV systems, procedure NA below -18°C (0°F) or above 54°C (130°F). GPS required. For inop ALS, increase RNP 0.30 all Cats visibility to 1½ SM. Simultaneous approach authorized.

ALSF-2

MISSED APPROACH: Climbing left turn to 3000 direct KEADY and hold.

D-ATIS	INDIANAPOLIS APP CON	INDY TOWER	GND CON	CLNC DEL	CPDLC
<b>134.25</b>	<b>128.175 317.8</b>	<b>120.9 251.1</b>	<b>121.9</b>	<b>128.75 251.1</b>	



EC-2, 20 FEB 2025 to 20 MAR 2025

EC-2, 20 FEB 2025 to 20 MAR 2025

OINKK 2100

3000 KEADY

2100

050°

RW05L

GP 3.00° TCH 53

See planview for multiple IF locations.

4.1 NM

CATEGORY	A	B	C	D
RNP 0.30 DA		1197/60	450 (500-1½)	

**AUTHORIZATION REQUIRED**

ELEV 796	<b>D</b> TDZE 747
----------	-------------------

HIRL all Rwys  
TDZ/CL Rwys 5L and 5R