

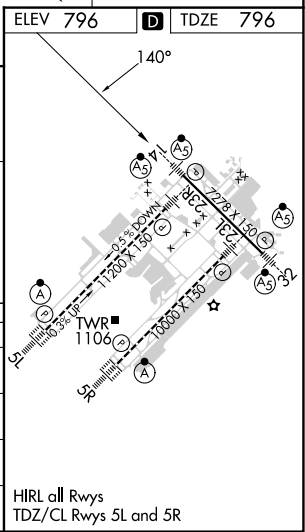
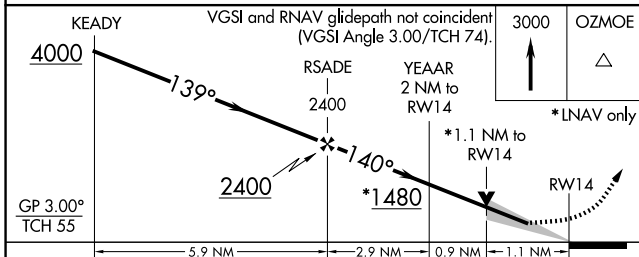
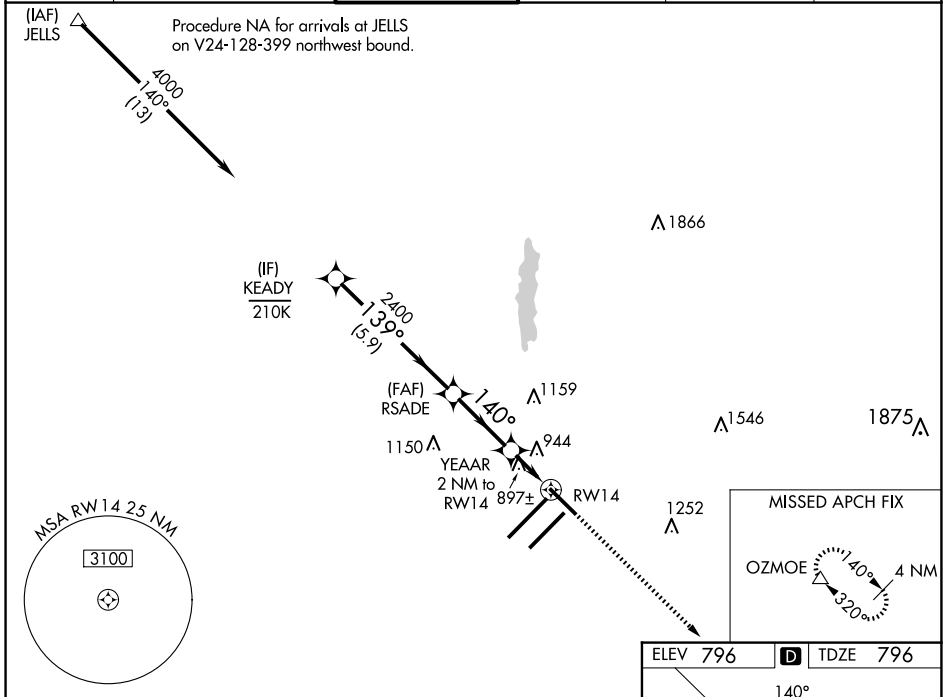
WAAS CH <b>42602</b> <b>W14A</b>	APP CRS <b>140°</b>	Rwy Idg TDZE <b>7278</b> <b>796</b> Apt Elev <b>796</b>
--	------------------------	--

# RNAV (GPS) Y RWY 14

INDIANAPOLIS INTL (IND)

<p><b>⚠</b> For uncompensated Baro-VNAV systems, LNAV/VNAV NA below -18°C (0°F) or above 54°C (130°F). DME/DME RNP-0.3 NA.  <b>**RVR 1800 authorized with use of FD or AP or HUD to DA.</b></p>	<p>MALSR  </p>	<p>MISSED APPROACH:                  Climb to 3000 direct OZMOE and hold.</p>
---	--------------------	---

D-ATIS <b>134.25</b>	INDIANAPOLIS APP CON <b>128.175 317.8</b>	INDY TOWER <b>120.9 251.1</b>	GND CON <b>121.9</b>	CLNC DEL <b>128.75 251.1</b>	CPDLC
-------------------------	--	----------------------------------	-------------------------	---------------------------------	-------



CATEGORY	A	B	C	D
LPV DA	<b>**996/24 200 (200-½)</b>			
LNAV/VNAV DA	<b>1092/24 296 (300-½)</b>			
LNAV MDA	<b>1200/24 404 (500-½)</b>	<b>1200/40 404 (500-¾)</b>		
<b>C</b> CIRCLING	<b>1420-1 624 (700-1)</b>	<b>1420-1¾ 624 (700-1¾)</b>		<b>1560-2½ 764 (800-2½)</b>

HIRL all Rwys  
 TDZ/CL Rwys 5L and 5R

EC-2, 20 FEB 2025 to 20 MAR 2025

EC-2, 20 FEB 2025 to 20 MAR 2025