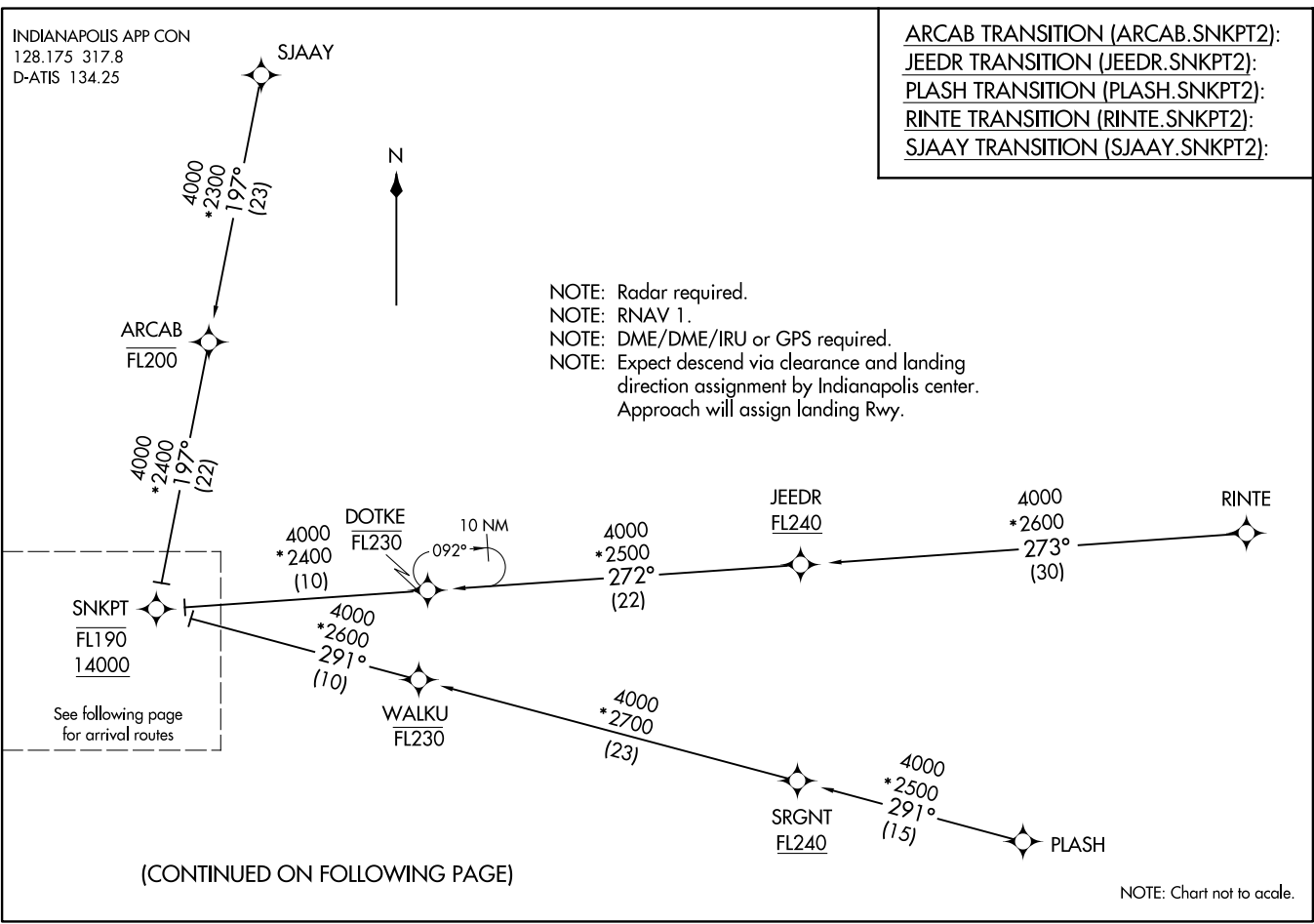


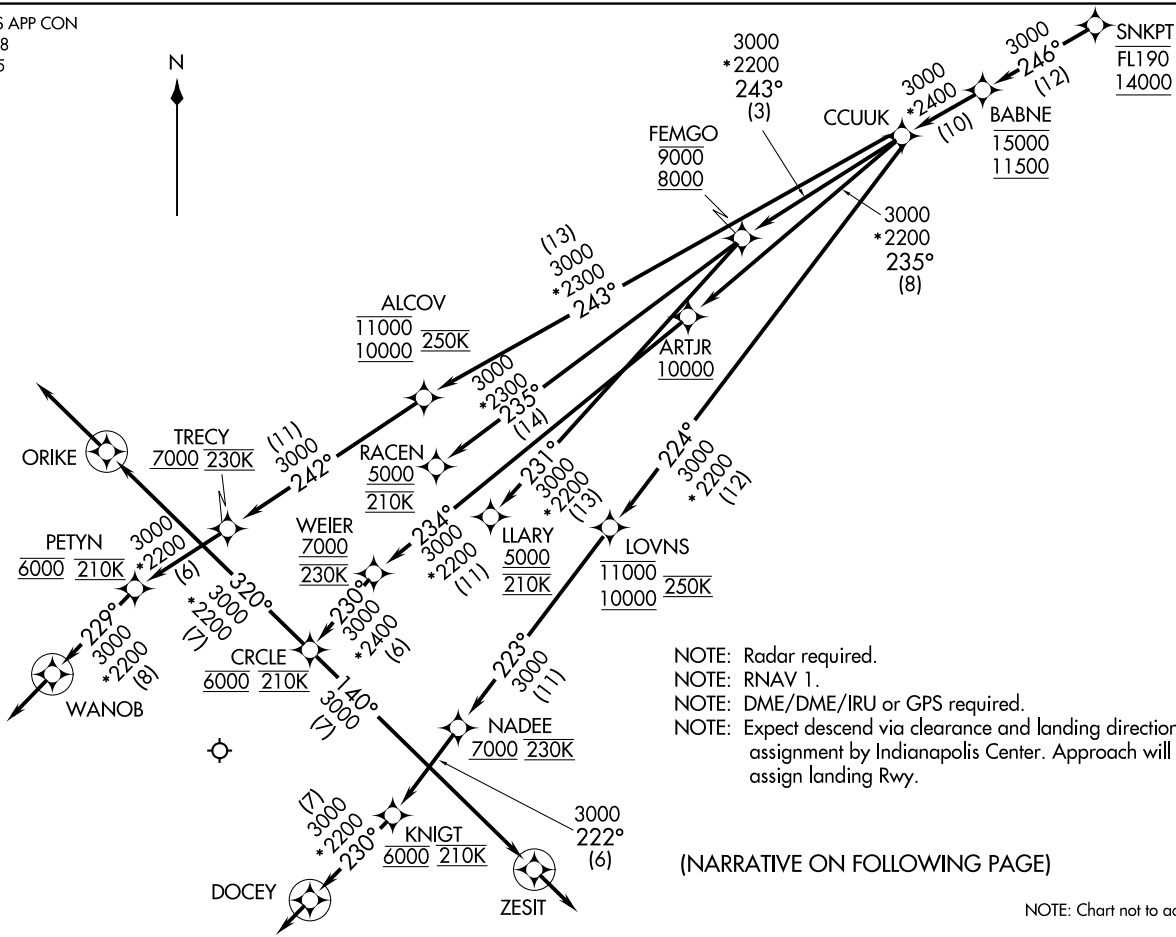
SNKPT TWO ARRIVAL (RNAV) Transition Routes
(SNKPT.SNKPT2) 10 NOV 16



ARCAB TRANSITION (ARCAB.SNKPT2):
 JEEDR TRANSITION (JEEDR.SNKPT2):
 PLASH TRANSITION (PLASH.SNKPT2):
 RINTE TRANSITION (RINTE.SNKPT2):
 SJAAY TRANSITION (SJAAY.SNKPT2):

(SNKPT.SNKPT2) 20338
 SNKPT TWO ARRIVAL (RNAV) Transition Routes
 AL-203 (FAA)
 INDIANAPOLIS INTL (IND)
 INDIANAPOLIS, INDIANA

INDIANAPOLIS APP CON
128.175 317.8
D-ATIS 134.25



NOTE: Radar required.
 NOTE: RNAV 1.
 NOTE: DME/DME/IRU or GPS required.
 NOTE: Expect descend via clearance and landing direction assignment by Indianapolis Center. Approach will assign landing Rwy.

(NARRATIVE ON FOLLOWING PAGE)

NOTE: Chart not to scale.

SNKPT TWO ARRIVAL (RNAV) Arrival Routes
(SNKPT.SNKPT2) 10 NOV 16

INDIANAPOLIS, INDIANA
INDIANAPOLIS INTL (IND)

(SNKPT.SNKPT2) 17173
SNKPT TWO ARRIVAL (RNAV) Arrival Routes
AI-203 (FAA)

INDIANAPOLIS INTL (IND)
INDIANAPOLIS, INDIANA

ARRIVAL ROUTE DESCRIPTION

From SNKPT on track 246° to cross BABNE between 11500 and 15000, then on track 246° to CCUUK.

LANDING RWY 5L: From CCUUK on track 243° to cross ALCOV between 10000 and 11000 and at 250K, then on track 242° to cross TREC Y at/above 7000 and at 230K, then on track 242° to cross PETYN at 6000 and at 210K, then on track 229° to WANOB, then on track 229°. Expect radar vectors to final approach course.

LANDING RWY 5R: From CCUUK on track 224° to cross LOVNS between 10000 and 11000 and at 250K, then on track 223° to cross NADEE at/above 7000 and at 230K, then on track 222° to cross KNIGT at 6000 and at 210K, then on track 230° to DOCEY, then on track 230°. Expect radar vectors to final approach course.

LANDING RWY 14: From CCUUK on track 235° to cross ARTJR at/above 10000, then on track 234° to cross WEIER at/above 7000 and at 230K then on track 230° to cross CRCL E at 6000 and at 210K, then on track 320° to ORIKE, then on track 320°. Expect radar vectors to final approach course.

LANDING RWY 23L: From CCUUK on track 243° to cross FEMGO between 8000 and 9000, then on track 231° to cross LLARY at/above 5000 and at 210K. Expect RNAV (RNP), RNAV (GPS) or ILS or LOC to Rwy 23L or radar vectors to final approach course.

LANDING RWY 23R: From CCUUK on track 243° to cross FEMGO between 8000 and 9000, then on track 235° to cross RACEN at/above 5000 and at 210K. Expect RNAV (RNP), RNAV (GPS) or ILS or LOC to Rwy 23R or radar vectors to final approach course.

LANDING RWY 32: From CCUUK on track 235° to cross ARTJR at/above 10000, then on track 234° to cross WEIER at/above 7000 and at 230K then on track 230° to cross CRCL E at 6000 and at 210K, then on track 140° to ZESIT, then on track 140°. Expect radar vectors to final approach course.

LOST COMMUNICATION:

In the event of lost communication prior to runway assignment, execute ILS or LOC Rwy 23R approach.