

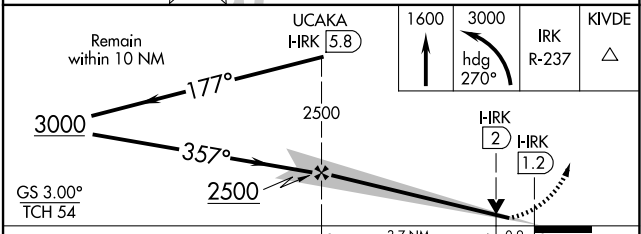
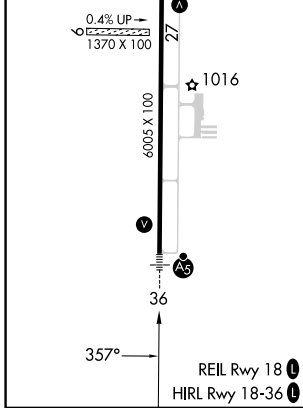
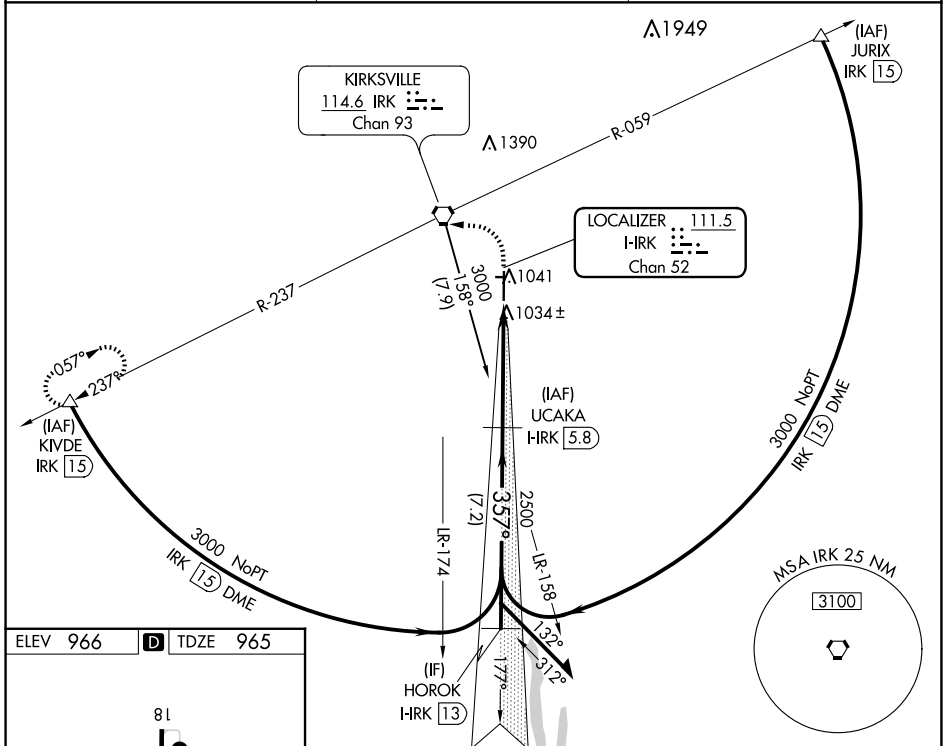
LOC/DME I-IRK 111.5 Chan 52	APP CRS 357°	Rwy Idg TDZE Apt Elev	6005 965 966
--	------------------------	-----------------------------	---

ILS or LOC RWY 36

KIRKSVILLE RGNL (IRK)

DME required.	MALSR	MISSED APPROACH: Climb to 1600 then climbing left turn to 3000 on heading 270° and IRK VORTAC R-237 to KIVDE/IRK 1.5 DME and hold.
Circling NA to Rwys 9 and 27.		

ASOS 121.125	KANSAS CITY CENTER 132.6 370.9	UNICOM 122.8 (CTAF) 0
------------------------	--	---------------------------------



CATEGORY	A	B	C	D
S-ILS 36		1165-½	200 (200-½)	
S-LOC 36		1300-½	335 (400-½)	
CIRCLING	1400-1	1440-1	1460-1½	1540-2
	434 (500-1)	474 (500-1)	494 (500-1½)	574 (600-2)

NC-3, 20 FEB 2025 to 20 MAR 2025

NC-3, 20 FEB 2025 to 20 MAR 2025