

WAAS CH 86509 W36A	APP CRS 360°	Rwy Idg TDZE 653 Apt Elev 656	7433
--	------------------------	---	-------------

RNAV (GPS) RWY 36

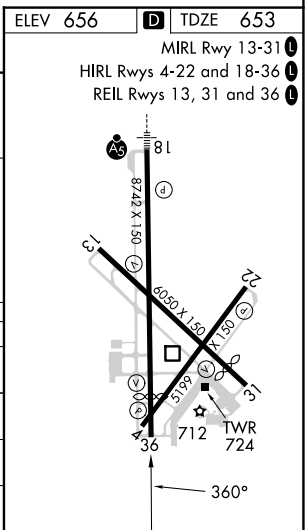
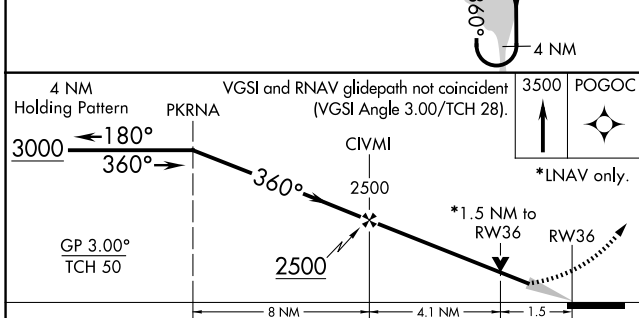
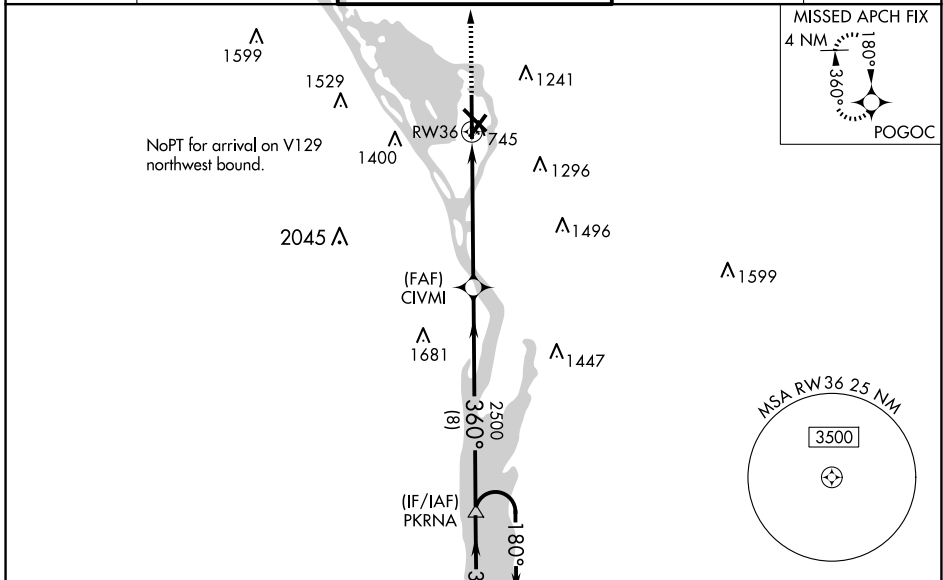
LA CROSSE RGNL (LSE)

RNP APCH.

▼ For uncompensated Baro-VNAV systems, LNAV/VNAV NA below -27° C or above 54° C. When local altimeter setting not received, use Winona altimeter setting: increase LPV DA to 1006 feet, LNAV/VNAV DA to 1256 feet and all MDA 60 feet. Increase LPV all Cats visibility ¼ SM, LNAV/VNAV all Cats visibility ¼ SM, LNAV Cats C/D visibility ¼ SM and Circling Cat C visibility ¼ SM. Circling to Rwy 22 NA at night. Baro-VNAV and VDP NA when using Winona altimeter setting.

⚠ MISSED APPROACH:
Climb to 3500 direct POGOC and hold.

ATIS 124.95	MINNEAPOLIS CENTER 128.6 363.0	LA CROSSE TOWER ★ 118.45 (CTAF) 251.075	GND CON 121.8	UNICOM 122.95
-----------------------	--	---	-------------------------	-------------------------



CATEGORY	A	B	C	D
LPV DA		953-1	300 (300-1)	
LNAV/VNAV DA		1203-2	550 (600-2)	
LNAV MDA	1140-1	487 (500-1)	1140-1½ 487 (500-1¼)	1140-1½ 487 (500-1½)
CIRCLING	1140-1 484 (500-1)	1460-1 804 (900-1)	1760-3 1104 (1200-3)	1820-3 1164 (1200-3)

EC-3, 20 FEB 2025 to 20 MAR 2025

EC-3, 20 FEB 2025 to 20 MAR 2025