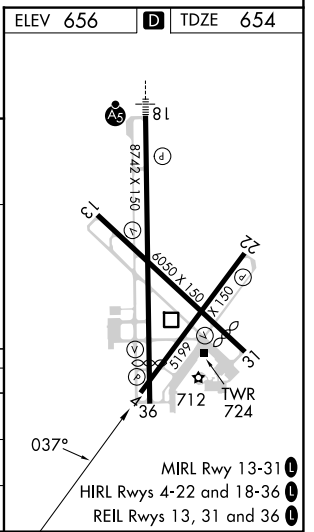
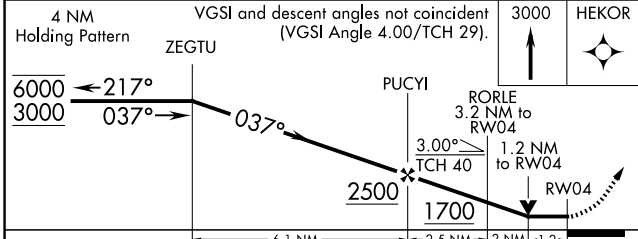
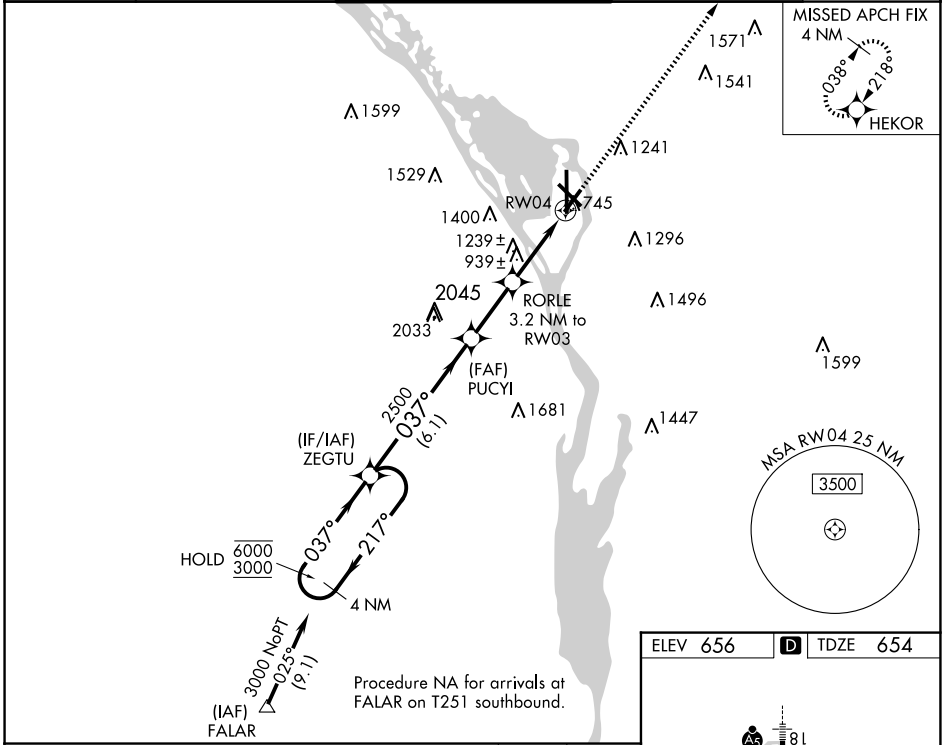


| | | |
|--|------------------------|---|
| WAAS CH 82622 W04A | APP CRS 037° | Rwy Idg 5199 TDZE 654 Apt Elev 656 |
|--|------------------------|---|

RNAV (GPS) RWY 4

LA CROSSE RGNL (LSE)

| | | | | |
|---|--|---|-------------------------|-------------------------|
| RNP APCH. Circling Rwy 22 NA at night. Rwy 22 helicopter visibility reduction below 3/4 SM NA. -22°C | | MISSED APPROACH: Climb to 3000 direct HEKOR and hold. | | |
| ATIS 124.95 | MINNEAPOLIS CENTER 128.6 363.0 | LA CROSSE TOWER * 118.45 (CTAF) 251.075 | GND CON 121.8 | UNICOM 122.95 |



| CATEGORY | A | B | C | D |
|-------------------|--------------------------|--------------------------|-------------------------|-------------------------|
| LP MDA | 1200-1 | 546 (600-1) | 1200-1½ | 546 (600-1½) |
| LNAV MDA | 1620-1¼ 966 (1000-1¼) | 1620-1½ 966 (1000-1½) | 1620-3 | 966 (1000-3) |
| C CIRCLING | 1620-1¼ 964 (1000-1¼) | 1620-1½ 964 (1000-1½) | 1760-3 1104 (1200-3) | 1820-3 1164 (1200-3) |

EC-3, 20 FEB 2025 to 20 MAR 2025

EC-3, 20 FEB 2025 to 20 MAR 2025