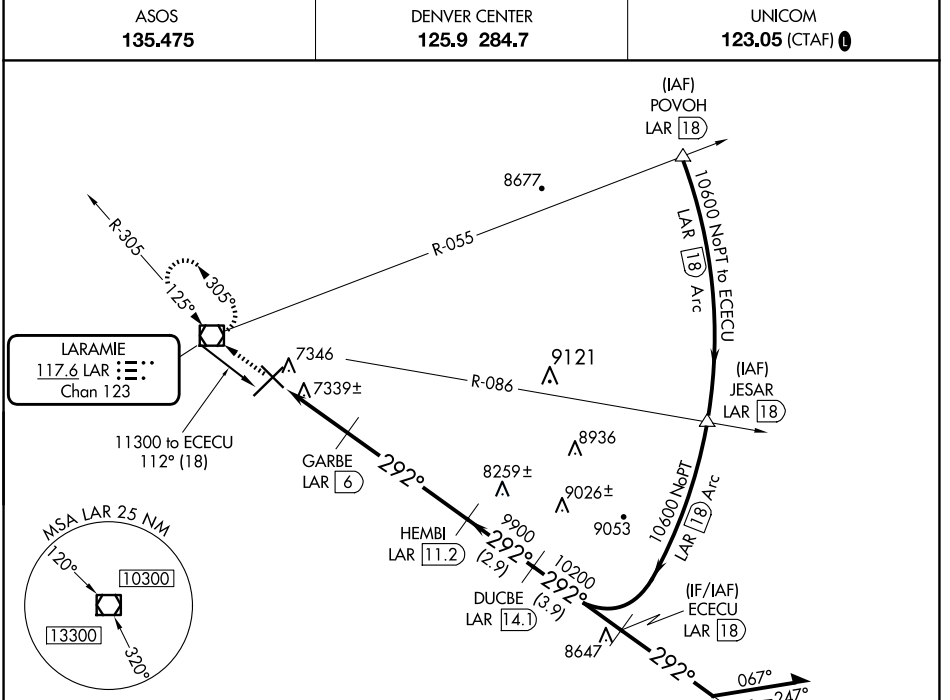


| | | |
|---|------------------------|---|
| VOR/DME LAR 117.6 Chan 123 | APP CRS 292° | Rwy Idg TDZE 6301 7278 Apt Elev 7284 |
|---|------------------------|---|

VOR/DME RWY 30

LARAMIE RGNL (L.A.R.)

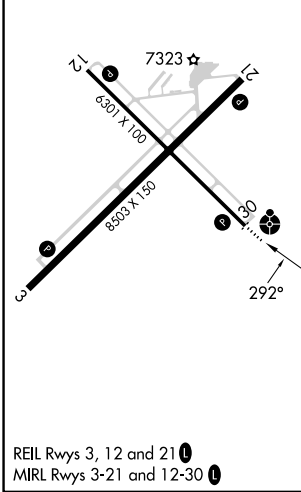
| | | | |
|--|---|-------------------------------------|----------------------------------|
| | ASOS 135.475 | DENVER CENTER 125.9 284.7 | UNICOM 123.05 (CTAF) 0 |
| | MISSED APPROACH: Climb to 9600 direct LAR VOR/DME and hold, continue climb-in-hold to 9600. | | |



NW-1, 20 FEB 2025 to 20 MAR 2025

NW-1, 20 FEB 2025 to 20 MAR 2025

| | | |
|-----------|----------|-----------|
| ELEV 7284 | D | TDZE 7278 |
|-----------|----------|-----------|



| | | | |
|----------|---|--|---|
| 9600 | LAR | ECECU LAR 18 | Remain within 10 NM |
| | | | |
| | GARBE LAR 6 HEMBI LAR 11.2 DUCBE LAR 14.1 | ECECU LAR 18 | |
| | LAR 3.1 LAR 4 LAR 6 | 3.00° TCH 41 8220 9900 10200 10600 | 10600 112° |
| | 0.9 | 2 NM | 5.2 NM |
| | | | 2.9 NM |
| | | | 3.9 NM |
| CATEGORY | A | B | C |
| S-30 | 7600-¾ 322 (400-¾) | | 7600-1 322 (400-1) |
| CIRCLING | 7660-1 376 (400-1) | 7760-1 476 (500-1) | 7880-1½ 596 (600-1½) 7920-2 636 (700-2) |