

WAAS CH <b>86633</b> <b>W32A</b>	APP CRS <b>322°</b>	Rwy Idg TDZE <b>494</b> Apt Elev <b>508</b>	<b>5927</b>
--	------------------------	---	-------------

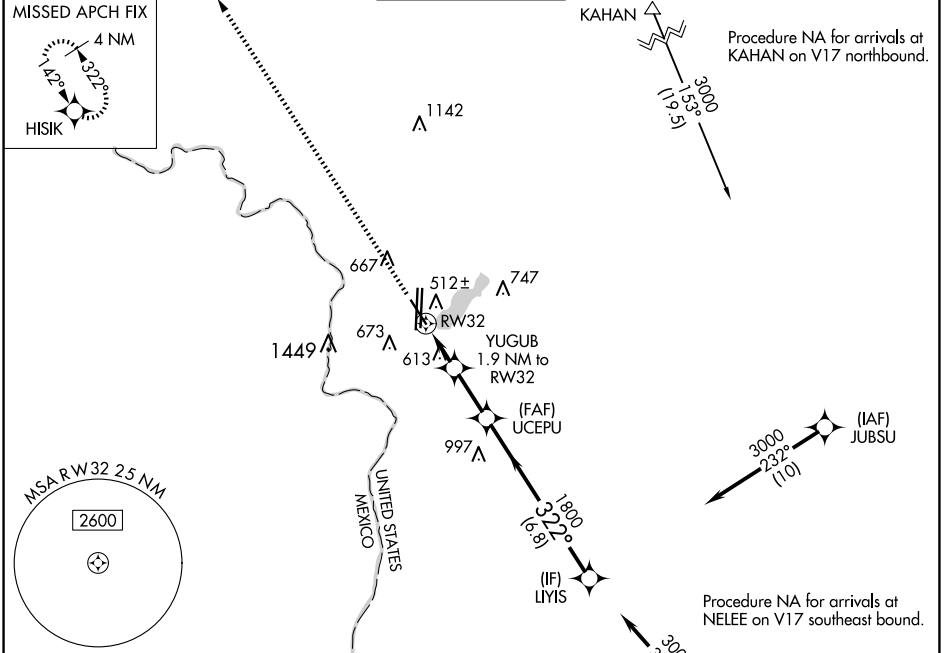
# RNAV (GPS) RWY 32

LAREDO INTL (L.R.D)

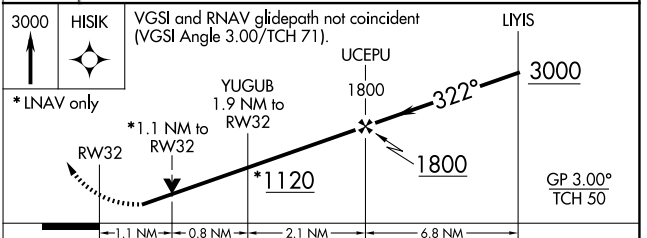
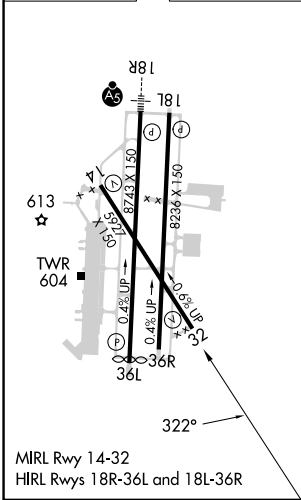
**⚠** For uncompensated Baro-VNAV systems, LNAV/VNAV NA below 1°C (34°F) or above 54°C (130°F). Circling NA west of Rwy 14 and 36L. Rwy 32 helicopter visibility reduction below 3/4 SM NA. DME/DME RNP-0.3 NA.

MISSED APPROACH: Climb to 3000 direct HISIK and hold.

ATIS <b>125.775</b>	HOUSTON CENTER <b>127.8 307.2</b>	LAREDO TOWER ★ <b>120.1(CTAF) 257.9</b>	GND CON <b>121.8</b>	UNICOM <b>122.95</b>
------------------------	--------------------------------------	--	-------------------------	-------------------------



ELEV <b>508</b>	<b>D</b>	TDZE <b>494</b>
-----------------	----------	-----------------



CATEGORY	A	B	C	D	E
LPV DA		744-3/4	250 (300-3/4)		
LNAV/VNAV DA		826-1	332 (400-1)		
LNAV MDA	880-1	386 (400-1)	880-1 1/8	386 (400-1 1/8)	
<b>C</b> CIRCLING	940-1 432 (500-1)	980-1 472 (500-1)	1100-1 1/2 592 (600-1 1/2)	1200-2 1/4 692 (700-2 1/4)	1200-2 1/2 692 (700-2 1/2)

SC-3, 20 FEB 2025 to 20 MAR 2025

SC-3, 20 FEB 2025 to 20 MAR 2025