

VORTAC LRD 117.4 Chan 121	APP CRS 139°	Rwy Idg TDZE Apt Elev 5927 508 508
---	------------------------	--

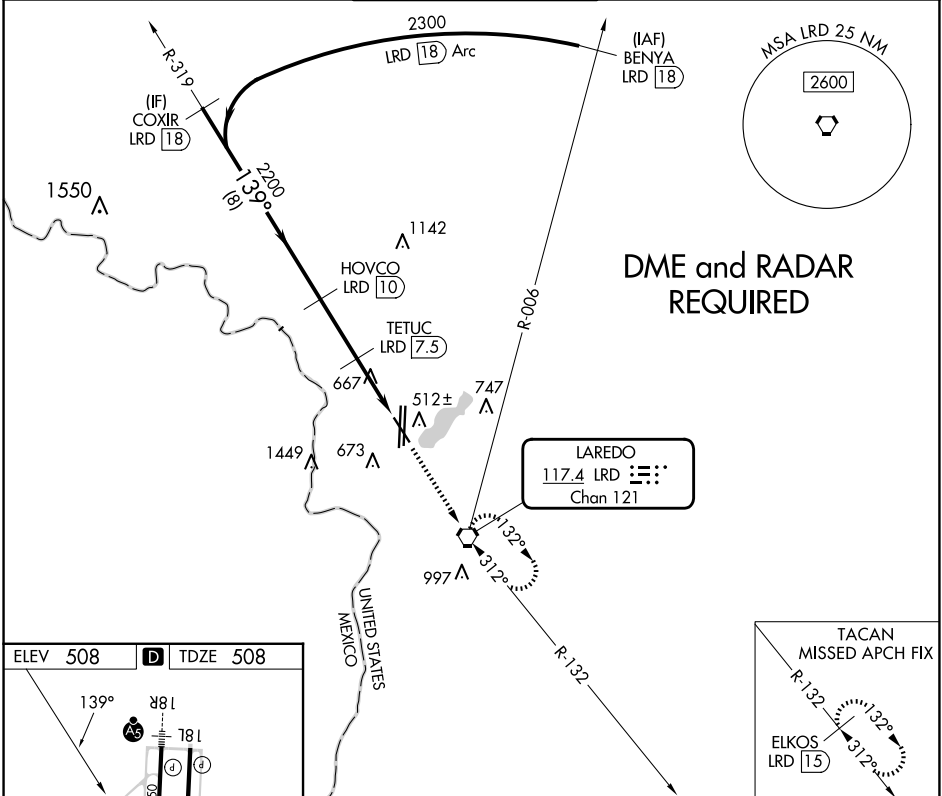
VOR or TACAN RWY 14

LAREDO INTL (LRD)

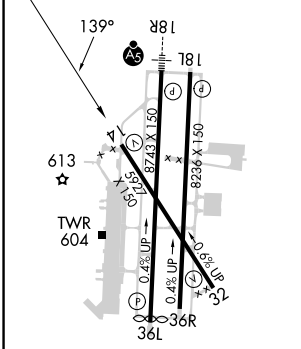
⚠ Circling NA west of Rwy 14 and 36L. DME required.

⚠ MISSED APPROACH: Climb to 2500 direct LRD VORTAC and hold, continue climb-in-hold to 2500 (TACAN aircraft continue on LRD VORTAC R-132 to ELKOS/15 DME and hold SE, 312° inbound).

ATIS 125.775	HOUSTON CENTER 127.8 307.2	LAREDO TOWER * 120.1 (CTAF) 0 257.9	GND CON 121.8	UNICOM 122.95
------------------------	--------------------------------------	---	-------------------------	-------------------------



ELEV 508	D	TDZE 508
----------	----------	----------



MIRL Rwy 14-32 HIRL Rwy 18-36L and 18L-36R

2300	139°	HOVCO LRD 10	2200	3.08° TCH 55	1280	LRD 6.1	LRD 5	2500 LRD
8 NM		2.5 NM		1.4 NM		1.1		

CATEGORY	A	B	C	D	E
S-14	920-1	412 (500-1)	920-1¼	412 (500-1¼)	920-1½ 412 (500-1½)
C CIRCLING	940-1 432 (500-1)	980-1 472 (500-1)	1100-1½ 592 (600-1½)	1200-2¼ 692 (700-2¼)	1200-2½ 692 (700-2½)

SC-3, 20 FEB 2025 to 20 MAR 2025

SC-3, 20 FEB 2025 to 20 MAR 2025