

LAS VEGAS, NEVADA

# LOC Y RWY 21L

LOC I-DIQ <b>109.1</b>	APCH CRS <b>209°</b>	Rwy Idg 21L <b>10,051</b> TDZE <b>1865</b> Arprt Elev <b>1869</b>	Rwy Idg 21R <b>10,120</b> TDZE <b>1869</b>	AL-227 [USAF]	NELLIS AFB (KLSV)
---------------------------	-------------------------	---	--	---------------	-------------------

RADAR or DME required.		ALSF-1 	MISSED APPROACH: Climb to 8000, intercept the LAS VORTAC R-018 to 10.3 DME (IREEN), then to LAS and hold, continue climb in hold to 8000.
<p>* When ALS inop, increase vis to 1 1/8 miles. ** Circling not authorized SE of Rwy 3R-21L.</p>			

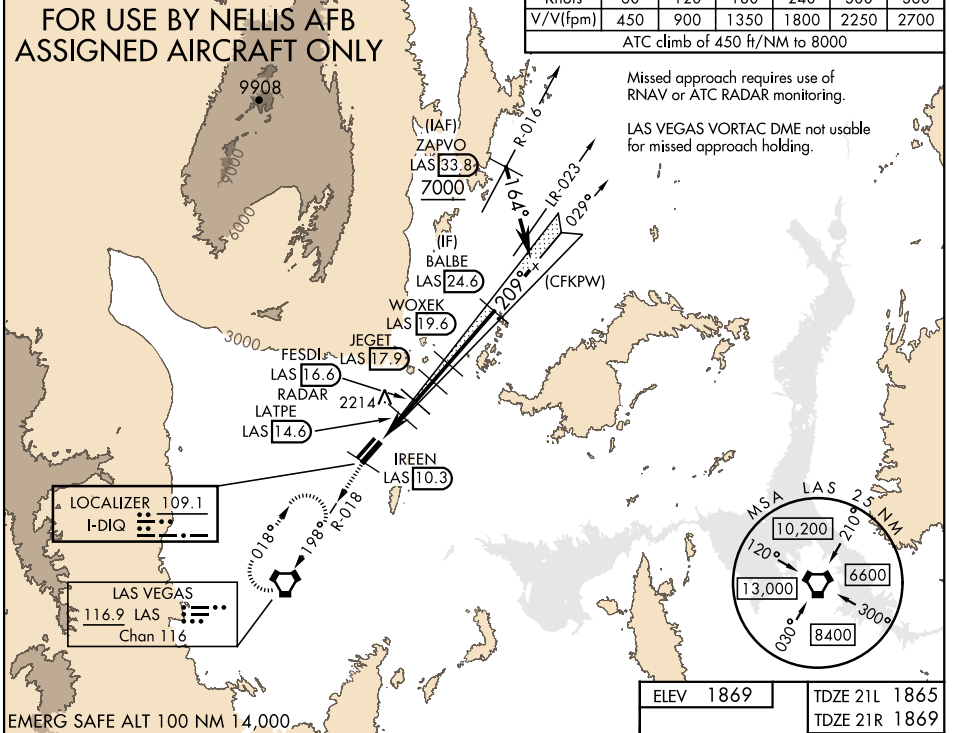
ATIS <b>270.1</b>	APP CON <b>124.95 273.55</b>	TOWER <b>132.55 327.0</b>	GND CON <b>121.8 275.8</b>	CLNC DEL <b>120.9 289.4</b>
----------------------	---------------------------------	------------------------------	-------------------------------	--------------------------------

## FOR USE BY NELLIS AFB ASSIGNED AIRCRAFT ONLY

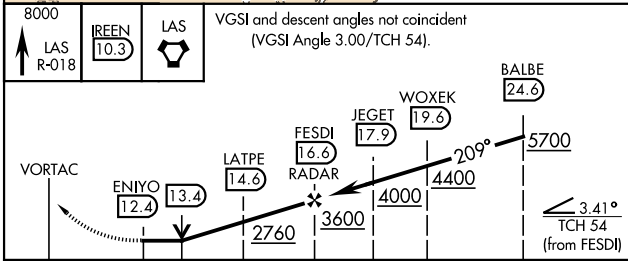
Knots	60	120	180	240	300	360
V/V(ftpm)	450	900	1350	1800	2250	2700
ATC climb of 450 ft/NM to 8000						

Misssed approach requires use of RNAV or ATC RADAR monitoring.

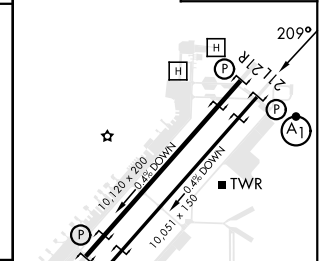
LAS VEGAS VORTAC DME not usable for missed approach holding.



EMERG SAFE ALT 100 NM 14,000



ELEV 1869	TDZE 21L 1865
	TDZE 21R 1869



CATEGORY	C	D	E
S-21L *	2360/50	495 (500-1)	
SIDESTEP 21R	2360-1 3/8	491 (500-1 3/8)	
CIRCLING **	2560-2 691 (700-2)	2840-3 971 (1000-3)	3140-3 1271 (1300-3)

FAF to MAP 4.2 NM					
Knots	60	90	120	150	180
Min:Sec	4:12	2:48	2:06	1:41	1:24

LAS VEGAS, NEVADA 36°14'N-115°02'W NELLIS AFB (KLSV)

Amdt 9 10AUG23

# LOC Y RWY 21L

SW-4, 20 FEB 2025 to 20 MAR 2025

SW-4, 20 FEB 2025 to 20 MAR 2025