

WAAS CH <b>63028</b> <b>W27A</b>	APP CRS <b>271°</b>	Rwy Idg TDZE <b>430</b> Apt Elev <b>430</b>	<b>5198</b>
--	------------------------	---	-------------

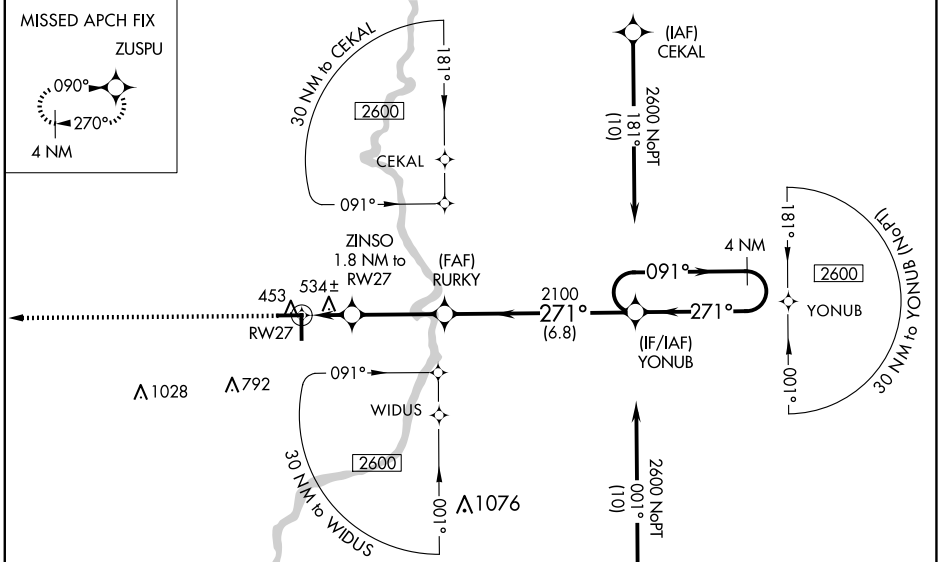
# RNAV (GPS) RWY 27

LAWRENCEVILLE-VINCENNES INTL (LWV)

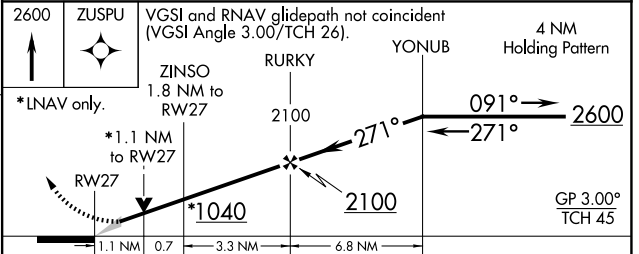
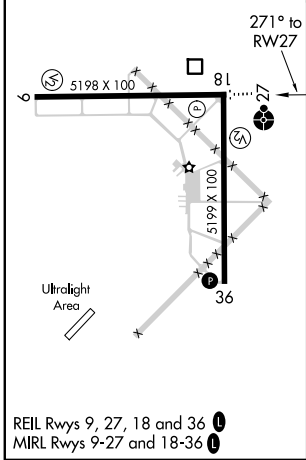
⚠ For uncompensated Baro-VNAV systems, LNAV/VNAV NA below -15°C (5°F) or above 41°C (105°F). DME/DME RNP-0.3 NA. Baro-VNAV and VDP NA when using Mount Carmel altimeter setting. When local altimeter setting not received, use Mount Carmel altimeter setting; increase LPV DA to 706 feet; increase LNAV/VNAV DA to 858 feet and all visibilities ½ SM; increase all MDAs 40 feet and Circling visibility Cat D ¼ SM. Inop table does not apply to LNAV Cat C. For inop ODALS increase LNAV/VNAV all Cats visibility to 1 ⅜ miles. For inop ODALS when using Mount Carmel altimeter setting increase LPV all Cats visibility to ⅞ mile, LNAV/VNAV all Cats visibility to 1 ½ miles and LNAV Cats C and D visibility to 1 ⅜ miles. Circling to Rwy 36 NA at night.

ODALS 	MISSED APPROACH: Climb to 2600 direct ZUSPU and hold.
-----------	--

ASOS <b>118.0</b>	EVANSVILLE APP CON * <b>125.6 343.7</b>	UNICOM <b>122.8 (CTAF)</b>
----------------------	--	-------------------------------



ELEV <b>430</b>	TDZE <b>430</b>
-----------------	-----------------



CATEGORY	A	B	C	D
LPV DA		680-¾	250 (300-¾)	
LNAV/VNAV DA		832-1¼	402 (500-1¼)	
LNAV MDA	800-¾	370 (400-¾)	800-1	370 (400-1)
CIRCLING	880-1 450 (500-1)	900-1 470 (500-1)	940-1½ 510 (600-1½)	1160-2¼ 730 (800-2¼)

EC-3, 20 FEB 2025 to 20 MAR 2025

EC-3, 20 FEB 2025 to 20 MAR 2025