

WAAS CH 99528 W36A	APP CRS 360°	Rwy Idg 5199 TDZE 428 Apt Elev 430
--	------------------------	---

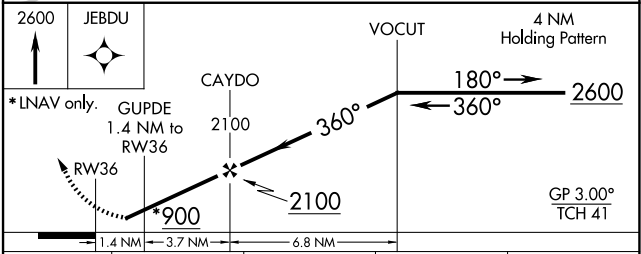
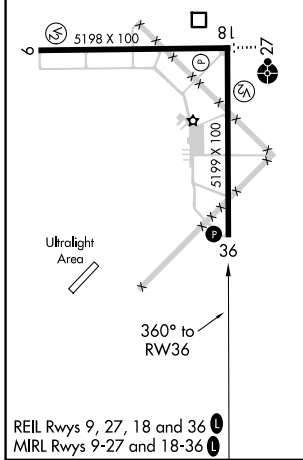
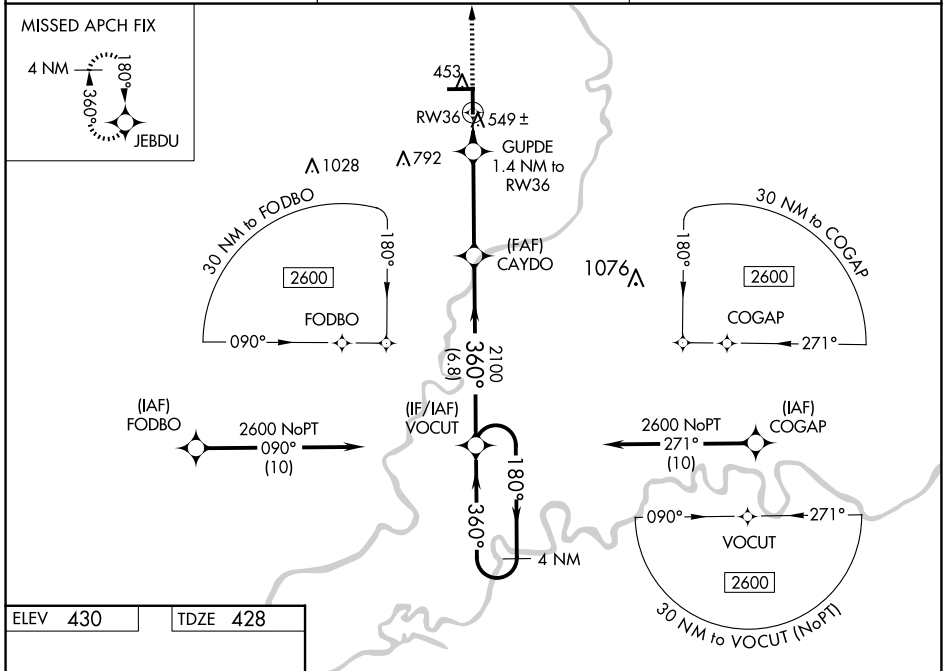
RNAV (GPS) RWY 36

LAWRENCEVILLE-VINCENNES INTL (LWV)

⚠ Baro-VNAV NA when using Mount Carmel altimeter setting. For uncompensated Baro-VNAV systems, LNAV/VNAV NA below -15°C (5°F) or above 41°C (105°F). Rwy 36 Straight-in and Circling minimums NA at night. DME/DME RNP-0.3 NA. Helicopter visibility reduction below 1 SM NA. When local altimeter setting not received, use Mount Carmel altimeter setting; increase LPV DA to 704 feet; increase LNAV/VNAV DA to 850 feet and all visibilities ½ SM; increase all MDAs 40 feet and LNAV visibility Cat C/D ½ SM and Circling visibility Cat D ¼ SM.

MISSED APPROACH: Climb to 2600 direct JEBDU and hold.

ASOS 118.0	EVANSVILLE APP CON ★ 125.6 343.7	UNICOM 122.8 (CTAF) ①
----------------------	--	---------------------------------



CATEGORY	A	B	C	D
LPV DA		678-1	250 (300-1)	
LNAV/VNAV DA		824-1½	396 (400-1½)	
LNAV MDA		800-1	372 (400-1)	
CIRCLING	880-1 450 (500-1)	900-1 470 (500-1)	940-1½ 510 (600-1½)	1160-2¼ 730 (800-2¼)

EC-3, 20 FEB 2025 to 20 MAR 2025

EC-3, 20 FEB 2025 to 20 MAR 2025