

WAAS CH <b>93728</b>	APP CRS <b>090°</b>	Rwy ldg TDZE <b>428</b>	<b>5198</b>
<b>W09A</b>		Apt Elev <b>430</b>	

# RNAV (GPS) RWY 9

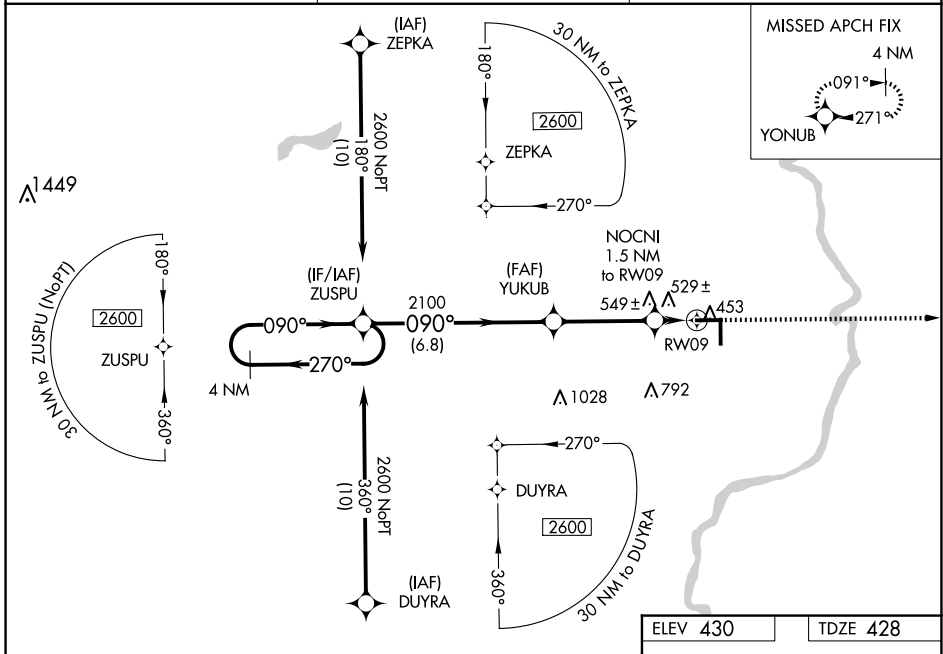
LAWRENCEVILLE-VINCENNES INTL (LWV)

**⚠** Baro-VNAV NA when using Mount Carmel altimeter setting. For uncompensated Baro-VNAV systems, LNAV/VNAV NA below -15°C (5°F) or above 41°C (105°F). DME/DME RNP-0.3 NA.

**⚠** When local altimeter setting not received, use Mount Carmel altimeter setting: increase LPV DA to 704 feet and all visibilities 1/8 SM; increase LNAV/VNAV DA to 855 feet and all visibilities 1/8 SM; increase all MDAs 40 feet and LNAV visibility Cat C/D 1/8 SM, and Circling visibility Cat D 1/4 SM. Circling to Rwy 36 NA at night.

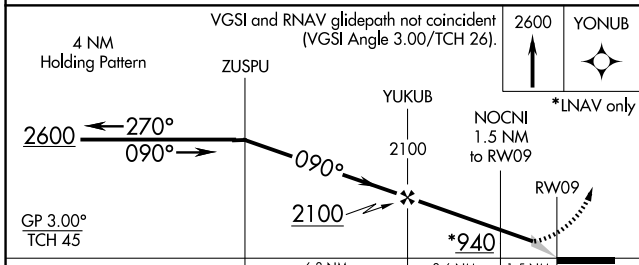
**MISSED APPROACH:**  
Climb to 2600 direct YONUB and hold.

ASOS <b>118.0</b>	EVANSVILLE APP CON ★ <b>125.6 343.7</b>	UNICOM <b>122.8 (CTAF) 0</b>
----------------------	--	---------------------------------

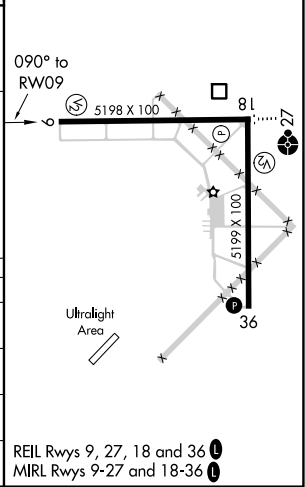


EC-3, 20 FEB 2025 to 20 MAR 2025

EC-3, 20 FEB 2025 to 20 MAR 2025



ELEV 430	TDZE 428
----------	----------



CATEGORY	A	B	C	D
LPV DA		678-3/4	250 (300-3/4)	
LNAV/VNAV DA		829-13/8	401 (400-13/8)	
LNAV MDA	820-1	392 (400-1)	820-13/8	392 (400-13/8)
CIRCLING	880-1 450 (500-1)	900-1 470 (500-1)	940-1 1/2 510 (600-1 1/2)	1160-2 1/4 730 (800-2 1/4)

REIL Rwy 9, 27, 18 and 36  
MIRL Rwy 9-27 and 18-36