

LINCOLN, NEBRASKA

# HI-VOR/DME or TACAN RWY 36

VORTAC LNK <b>116.1</b> Chan <b>108</b>	APCH CRS <b>360°</b>	Rwy ldg <b>12,901</b> TDZE <b>1175</b> Arprt Elev <b>1219</b>
-----------------------------------------------	-------------------------	---------------------------------------------------------------------

[USAF]

LINCOLN (KLNK)

RADAR required

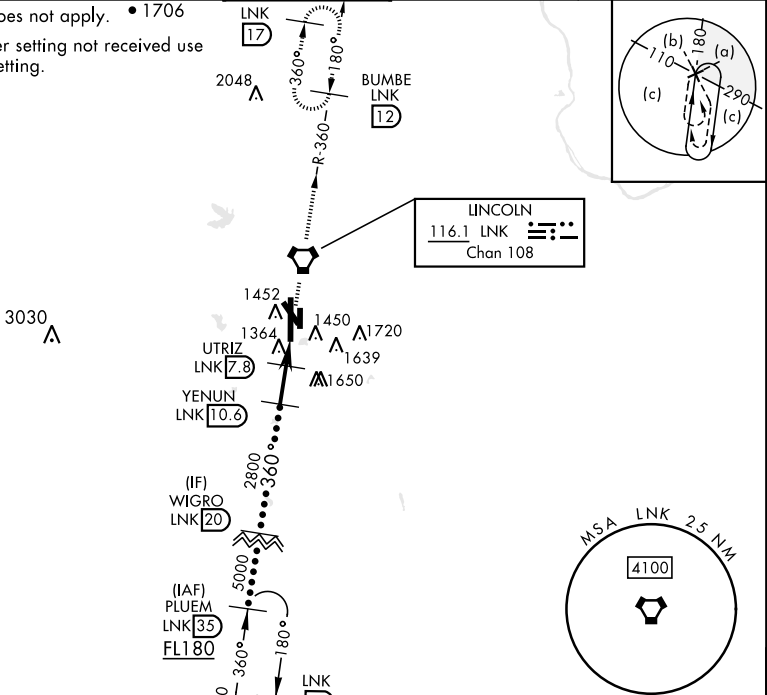


MISSED APPROACH: Climb to 3000 direct LNK VORTAC then via LNK R-360 to BUMBE 12 DME and hold.

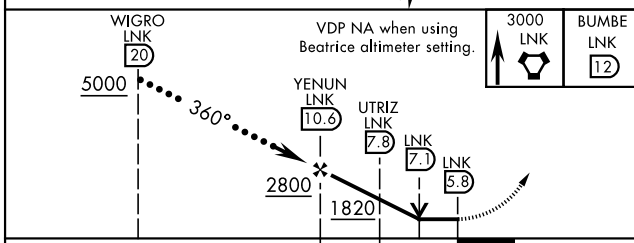
★ When ALS inop, increase CAT E vis to 1 3/8 miles.  
★★ When ALS inop, increase CAT CDE vis to 1 1/8 miles.

ATIS <b>118.05 290.9</b>	OMAHA APP CON <b>124.0 270.3</b>	TOWER ★ <b>118.5 253.5</b>	GND CON <b>121.9 275.8</b>	CLNC DEL <b>120.7 225.4</b>
-----------------------------	-------------------------------------	-------------------------------	-------------------------------	--------------------------------

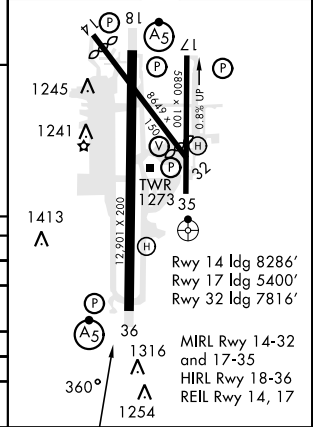
Inoperative table does not apply. • 1706  
When local altimeter setting not received use Beatrice altimeter setting.



EMERG SAFE ALT 100 NM 4800



ELEV	1219	TDZE	1175
------	------	------	------



CATEGORY	C	D	E
S-36 *	1620-7/8	445	(500-7/8)
CIRCLING	1760-1 1/2 541 (600-1 1/2)	1820-2 601 (700-2)	2040-3 821 (900-3)
BEATRICE ALTIMETER SETTING			
S-36 **	1720-1 1/8	545	(600-1 1/8)
CIRCLING	1860-1 3/4 641 (700-1 3/4)	1920-2 1/4 701 (800-2 1/4)	2140-3 921 (1000-3)

LINCOLN, NEBRASKA

40°51'N-96°46'W

LINCOLN (KLNK)

Amtd 5 31OCT24

# HI-VOR/DME or TACAN RWY 36

NC-2, 20 FEB 2025 to 20 MAR 2025

NC-2, 20 FEB 2025 to 20 MAR 2025