


LOC I-LNK 109.9	APP CRS 357°	Rwy Idg 12901 TDZE 1175 Apt Elev 1219
---------------------------	------------------------	--

ILS Y or LOC Y RWY 36

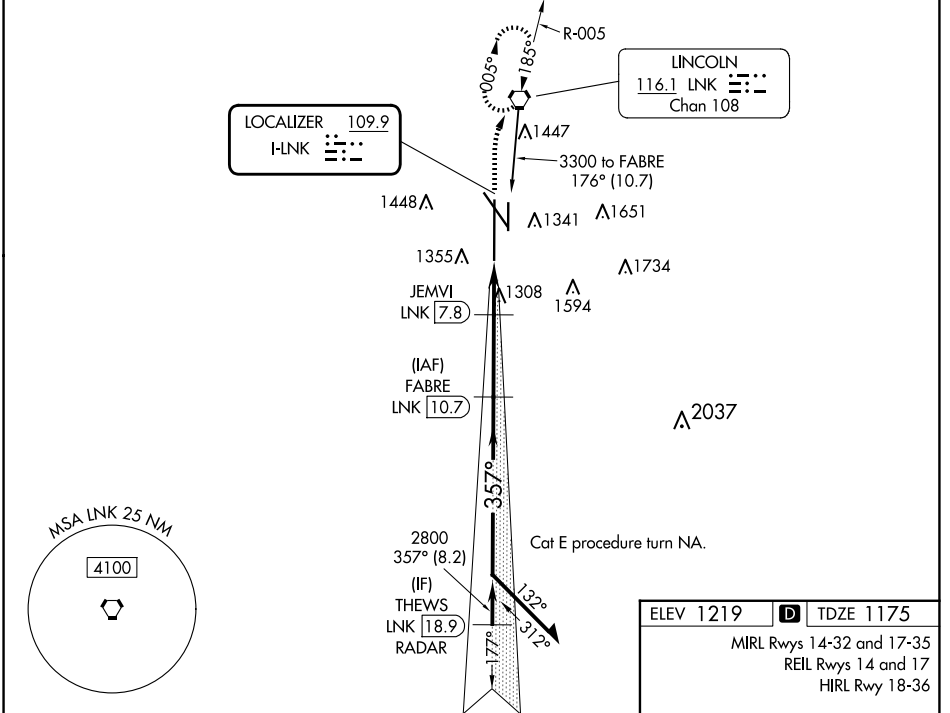
LINCOLN (LNK)

DME required. RADAR required for procedure entry at THEWS.

⚠ For inop ALS, increase S-ILS 36 Cat E visibility to RVR 4000, S-LOC 36 Cat E visibility to 1 $\frac{3}{8}$ SM. DME from LNK VORTAC. DME use requires simultaneous reception of I-LNK and LNK DME. *RVR 1800 authorized with use of FD or AP or HUD to DA.

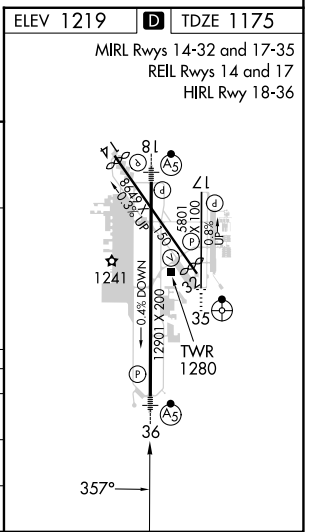
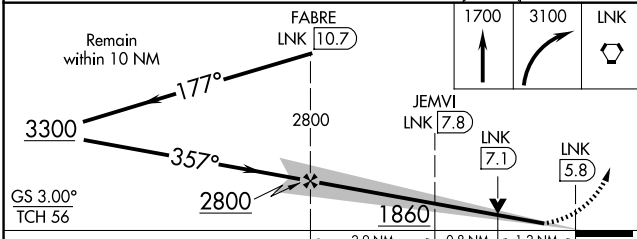
MALSR  MISSED APPROACH: Climb to 1700 then climbing right turn to 3100 direct LNK VORTAC and hold, continue climb-in-hold to 3100.

ATIS 118.05 290.9	OMAHA APP CON 124.0 270.3	LINCOLN TOWER * 118.5 (CTAF) 253.5	GND CON 121.9 275.8	CLNC DEL 120.7 225.4	UNICOM 122.95
-----------------------------	-------------------------------------	--	-------------------------------	--------------------------------	-------------------------



NC-2, 20 FEB 2025 to 20 MAR 2025

NC-2, 20 FEB 2025 to 20 MAR 2025



CATEGORY	A	B	C	D	E
S-ILS 36*	1375/24 200 (200- $\frac{1}{2}$)				
S-LOC 36	1620/24	445 (500- $\frac{1}{2}$)	1620/45 445 (500- $\frac{7}{8}$)		
CIRCLING	1680-1 461 (500-1)	1760-1 541 (600-1)	1820-1 $\frac{3}{4}$ 601 (700-1 $\frac{3}{4}$)	1960-2 $\frac{1}{2}$ 741 (800-2 $\frac{1}{2}$)	2040-3 821 (900-3)