

EMMLN ONE ARRIVAL  
(APLES, EMMLN1) 03 NOV 22

(APLES, EMMLN1) 23334  
EMMLN ONE ARRIVAL

AL-236 (FAA)

LONG BEACH, CALIFORNIA

SOCAL APP CON  
127.0 318.2  
FUL ATIS  
125.05  
HHR ATIS  
118.4  
KSLI ATIS\*  
118.875 379.975  
LGB ATIS  
127.75  
SNA D-ATIS  
126.0

EDWARDS  
116.4 EDW  
Chan 111

DAGGETT  
113.2 DAG  
Chan 79

VICTORVILLE  
109.05 VCV  
Chan 27(Y)

PALMDALE  
115.55 PMD  
Chan 102(Y)

HECTOR  
112.7 HEC  
Chan 74

POMONA  
110.4 POM  
Chan 41

Ldg KLGB/KFUL/KSLI/KSNA

SEAL BEACH  
115.7 SLI  
Chan 104

JACK NORTHROP FIELD/HAWTHORNE MUNI

LONG BEACH (DAUGHERTY FLD)

FULLERTON MUNI

LOS ALAMITOS AAF

DOWDD  
6000

RNDAL  
6000

Ldg KHHR

POXKU  
6000

PARADISE  
112.2 PDZ  
Chan 59  
6000

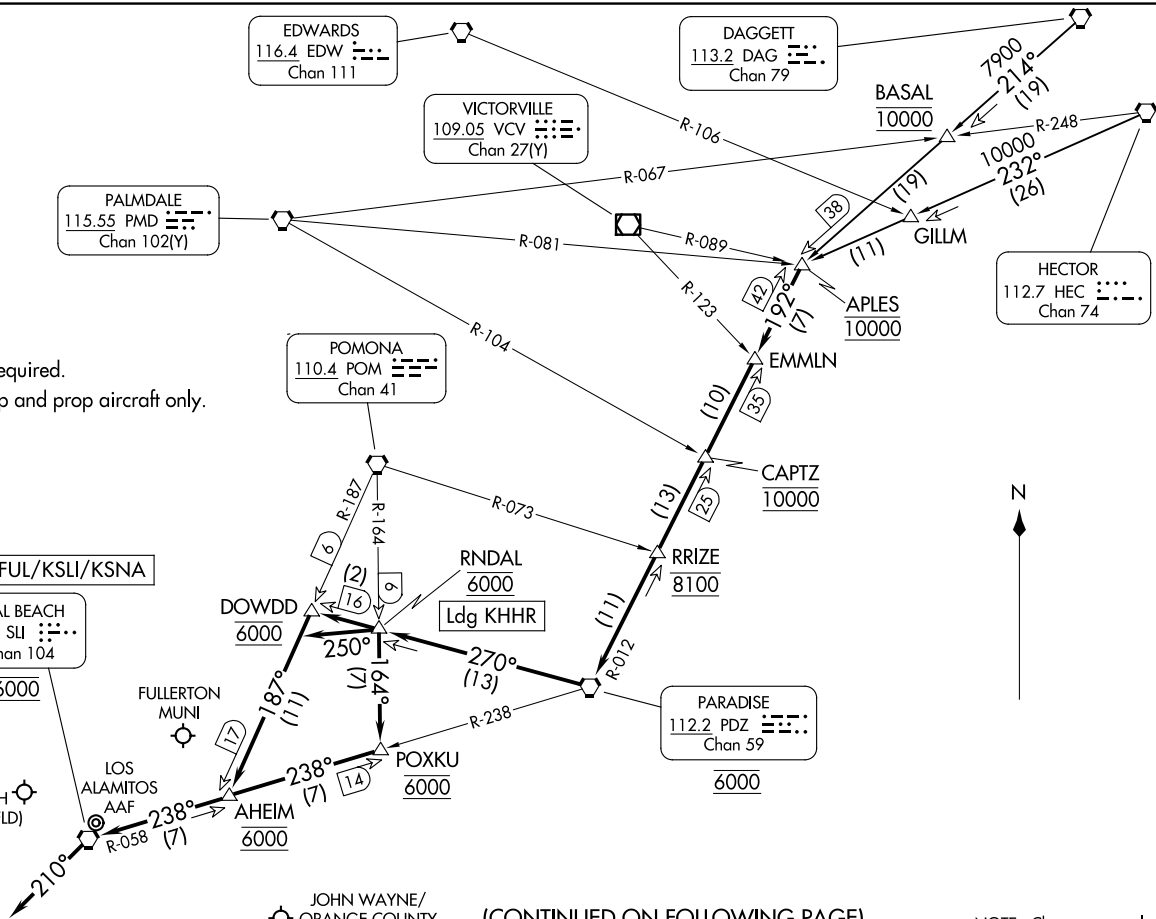
JOHN WAYNE/  
ORANGE COUNTY

(CONTINUED ON FOLLOWING PAGE)

NOTE: Chart not to scale

LONG BEACH, CALIFORNIA

NOTE: RADAR required.  
NOTE: Turboprop and prop aircraft only.



ARRIVAL ROUTE DESCRIPTION

DAGGETT TRANSITION (DAG.EMMLN1): From over DAG VORTAC on DAG R-214 to APLES. Thence. . . .

HECTOR TRANSITION (HEC.EMMLN1): From over HEC VORTAC on HEC R-232 to APLES. Thence. . . .

LANDING KLGB/KFUL/KSLI: From over APLES on PARADISE VORTAC (PDZ) R-012 to cross CAPTZ at 10000, then on PDZ R-012 to cross RRIZE at 8100, then on PDZ R-012 to cross PDZ VORTAC at 6000, then on PDZ R-270 to cross DOWDD at 6000, then on POMONA VORTAC (POM) R-187 to cross AHEIM at 6000, then on SEAL BEACH VORTAC (SLI) R-058 to cross SLI VORTAC at 6000.

LANDING KLGB: From over SLI VORTAC, fly heading 210°, expect RADAR vectors to final approach course.

LANDING KFUL: From over SLI VORTAC, expect VOR-A approach.

LANDING KSLI: From over SLI VORTAC, expect VOR or TACAN RWY 22L approach or RADAR vectors to final approach course.

LANDING KHHR: From over APLES on PARADISE VORTAC (PDZ) R-012 to cross CAPTZ at 10000, then on PDZ R-012 to cross RRIZE at 8100, then on PDZ R-012 to cross PDZ VORTAC at 6000, then on PDZ R-270 to cross RNDAL at 6000, then fly heading 250°. Expect RADAR vectors to final approach course.

LANDING KSNA: From over APLES on PARADISE VORTAC (PDZ) R-012 to cross CAPTZ at 10000, then on PDZ R-012 to cross RRIZE at 8100, then on PDZ R-012 to cross PDZ VORTAC at 6000, then on PDZ R-270 to cross RNDAL at 6000, then on POM R-164 to cross POXKU at 6000, then on SLI R-058 to cross SLI VORTAC at 6000. Expect RADAR vectors to final approach course.

SW-3, 20 FEB 2025 to 20 MAR 2025

SW-3, 20 FEB 2025 to 20 MAR 2025