

BASET FIVE ARRIVAL
(BASET.BASET5) 07DEC17

BASET.BASET5) 23334
BASET FIVE ARRIVAL

SOCAL APP CON
124.05 353.775
D-ATIS ARR
133.8

SANTA MONICA
110.8 SMO
Chan 45

8000

LOS ANGELES
113.6 LAX
Chan 83

REEDR
9000

DOWNE
10000

BASET

ARNES
14000
13000

BINDY

CIVET
17000
15000

DAWNA

RESOR

HECTOR
112.7 HEC
Chan 74

PEACH SPRINGS
112.0 PGS
Chan 57

103 MAA FL450
FL250
229°
1179 (120)

BUGGA

DIKES

FL230
226°
(175) (102)

EMMEY

GRAMM

RUSTT

MAA FL450
16000
245°
(35)

IPHIW

MAA FL180
16000
249°
(14)

ARRVD

KONZL

WYVIL
17000

LAADY
FL190 280K

RONLD

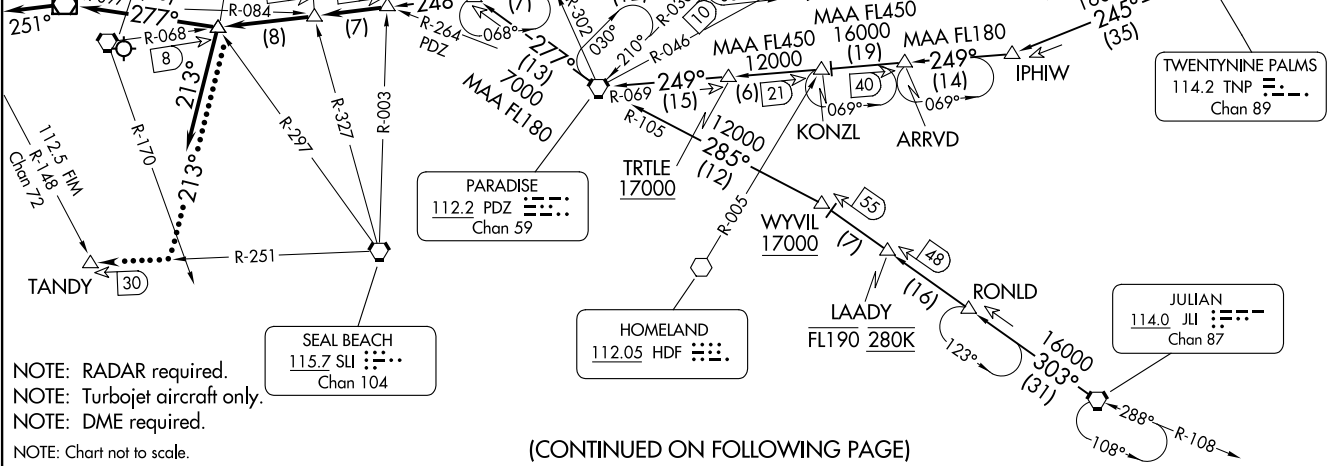
JULIAN
114.0 JLI
Chan 87

288°
16000
303°
1311
108°
R-108

TWENTYNINE PALMS
114.2 TNP
Chan 89

AL-237 (FAA)

LOS ANGELES INTL (LAX)
LOS ANGELES, CALIFORNIA



NOTE: RADAR required.
NOTE: Turbojet aircraft only.
NOTE: DME required.
NOTE: Chart not to scale.

(CONTINUED ON FOLLOWING PAGE)

LOS ANGELES, CALIFORNIA
LOS ANGELES INTL (LAX)

ARRIVAL ROUTE DESCRIPTION

HECTOR TRANSITION (HEC.BASET5): From over HEC VORTAC via HEC R-211 and PDZ R-030 to CIVET INT, then via LAX R-068 to BASET INT. Thence. . . .

JULIAN TRANSITION (JLI.BASET5): From over JLI VORTAC via JLI R-303 to WYVIL, then via PDZ R-105 to PDZ VORTAC, then via PDZ R-277 to ARNES, then via LAX R-068 to BASET. Thence. . . .

PEACH SPRINGS TRANSITION (PGS.BASET5): From over PGS VOR/DME via PGS R-229 and PDZ R-046 to RUSTT INT, then via LAX R-068 to BASET INT. Thence. . . .

TWENTYNINE PALMS TRANSITION (TNP.BASET5): From over TNP VORTAC via TNP R-245 and PDZ R-069 to PDZ VORTAC, then via PDZ R-277 to ARNES, then via LAX R-068 to BASET. Thence. . . .

. . . .from BASET on LAX VORTAC R-068 to cross DOWNE at or above 10000, then on LAX R-068 to cross REEDR at or above 9000.

LANDING RUNWAYS 6L/R: From REEDR on SMO VOR/DME R-097 to cross SMO at or above 8000, then on heading 251° or as assigned by ATC. Expect RADAR vectors to final approach course.

LANDING RUNWAYS 7L/R: From REEDR on heading 213° or as assigned by ATC. Expect RADAR vectors to final approach course.

LOST COMMUNICATIONS

In the event of lost communications: If landing Rwy 6L/R proceed on the ILS or LOC RWY 6R. If landing Rwy 7L/R depart REEDR heading 213° to intercept the SLI R-251 to TANDY.

SW-3, 20 FEB 2025 to 20 MAR 2025

SW-3, 20 FEB 2025 to 20 MAR 2025