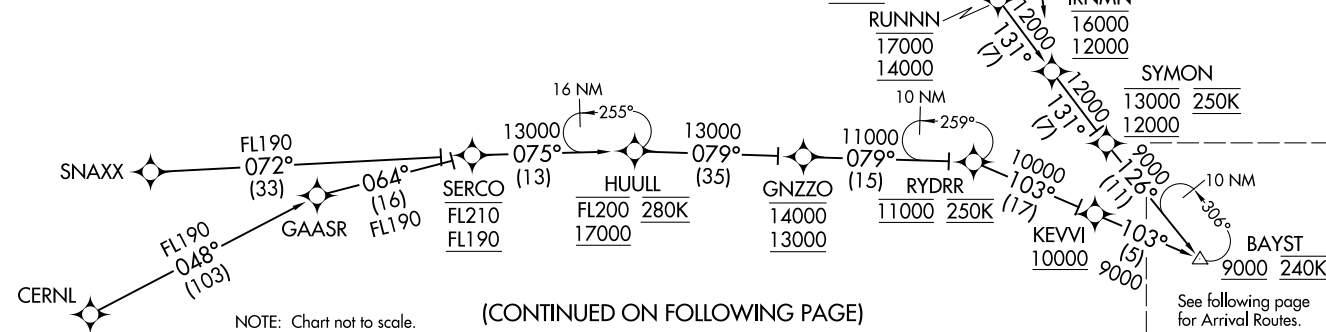


- BURGL TRANSITION (BURGL.BAYST1)
- CERNL TRANSITION (CERNL.BAYST1)
- FRASR TRANSITION (FRASR.BAYST1)
- HUULL TRANSITION (HUULL.BAYST1)
- MUPTT TRANSITION (MUPTT.BAYST1)
- REBRG TRANSITION (REBRG.BAYST1)
- RYDRR TRANSITION (RYDRR.BAYST1)
- SNAXX TRANSITION (SNAXX.BAYST1)

NOTE: RADAR required.
 NOTE: RNAV 1.
 NOTE: DME/DME/IRU or GPS required.
 NOTE: Turbojet aircraft only.
 NOTE: Expect Rwy 25L unless otherwise assigned by ATC.
 NOTE: CERNL TRANSITION GPS required.
 NOTE: BURGL, FRASR, HUULL, SNAXX, MUPTT, REBRG, RYDRR
 TRANSITIONS DME/DME/IRU or GPS required.
 NOTE: Do not file-to be assigned by ATC.



NOTE: Chart not to scale.

(CONTINUED ON FOLLOWING PAGE)

SOCAL APP CON
 124.5 235.975
 D-ATIS ARR
 133.8
 LOS ANGELES TOWER
 (N) 133.9 239.3
 (S) 120.95 379.1

BAYST ONE ARRIVAL (RNAV) Transition Routes
 (BAYST.BAYST1) 24MAY18

LOS ANGELES, CALIFORNIA
 LOS ANGELES INTL (LAX)

(BAYST.BAYST1) 18144
BAYST ONE ARRIVAL (RNAV) Transition Routes AL-237 (FAA)
 LOS ANGELES, CALIFORNIA

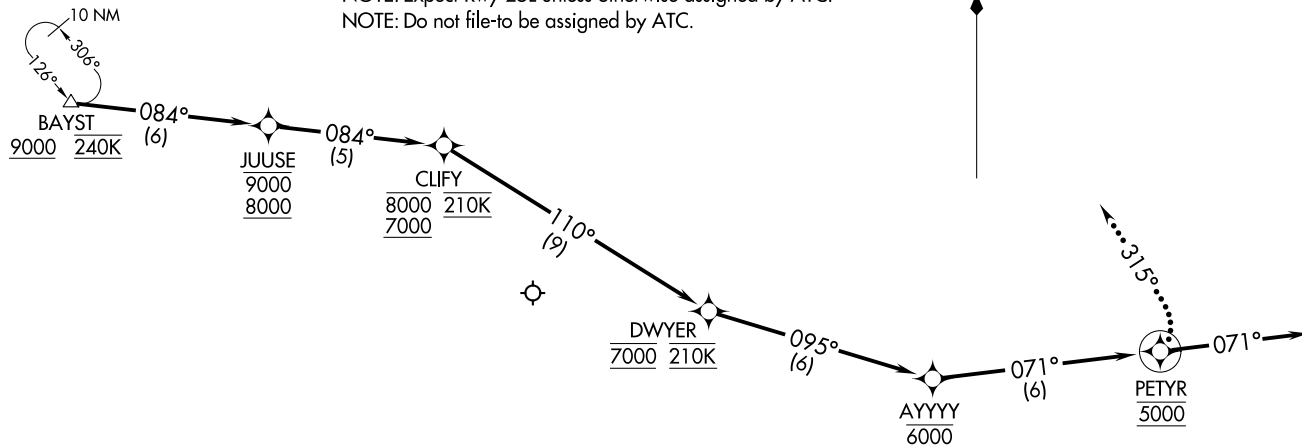
BAYST ONE ARRIVAL (RNAV) Arrival Route
 (BAYST.BAYST1) 24MAY18

NOTE: RADAR required.
 NOTE: RNAV 1.
 NOTE: DME/DME/IRU or GPS required.
 NOTE: Turbojet aircraft only.
 NOTE: Expect Rwy 25L unless otherwise assigned by ATC.
 NOTE: Do not file-to be assigned by ATC.

SOCAL APP CON
 124.5 235.975
 D-ATIS ARR
 133.8
 LOS ANGELES TOWER
 (N) 133.9 239.3
 (S) 120.95 379.1

BAYST ONE ARRIVAL (RNAV) Arrival Route
 (BAYST.BAYST1) 18144
 AL-237 (FAA)

LOS ANGELES INTL (LAX)
 LOS ANGELES, CALIFORNIA



NOTE: Chart not to scale.

ARRIVAL ROUTE DESCRIPTION

From BAYST on track 084° to cross JUUSE between 8000 and 9000, then on track 084° to cross CLIFY between 7000 and 8000 and at 210K, then on track 110° to cross DWYER at 7000 and at 210K, then on track 095° to cross AYYYY at 6000, then on track 071° to cross PETYR at 5000, then on track 071° or as assigned by ATC. Expect RADAR vectors to ILS or RNAV (RNP) RWY 25L final approach course.

LOST COMMUNICATIONS

After PETYR turn left heading 315° and intercept the Rwy 25L localizer, proceed on the ILS RWY 25L approach.

LOS ANGELES, CALIFORNIA
 LOS ANGELES INTL (LAX)