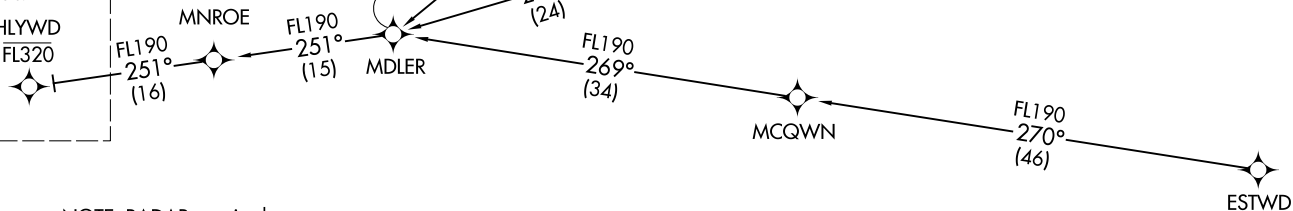


HLWWD ONE ARRIVAL (RNAV) Transition Routes
(HLWWD.HLWWD1) 02MAR17

SOCAL APP CON
124.05 353.775
D-ATIS ARR
133.8
LOS ANGELES TOWER
(N) 133.9 239.3
(S) 120.95 379.1



See following page for arrival route.
HLWWD
FL320



- NOTE: RADAR required.
- NOTE: RNAV 1.
- NOTE: DME/DME/IRU or GPS required.
- NOTE: Turbojet aircraft only.
- NOTE: Los Angeles landing west traffic.
- NOTE: Expect runway 25L unless otherwise assigned by ATC.
- NOTE: Expect local area altimeter reaching FL230.
- NOTE: MDLER transition ATC only, do not file.

NOTE: Chart not to scale.

(CONTINUED ON FOLLOWING PAGE)

ESTWD TRANSITION (ESTWD.HLWWD1)
FNND TRANSITION (FNND.HLWWD1)
GABBL TRANSITION (GABBL.HLWWD1)
MDLER TRANSITION (MDLER.HLWWD1)

HLWWD ONE ARRIVAL (RNAV) Transition Routes
(HLWWD.HLWWD1) 17117

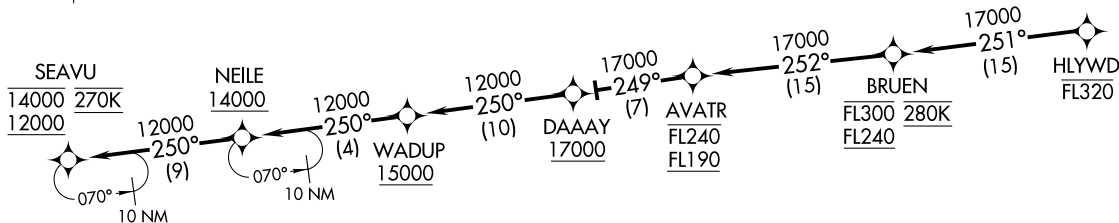
LOS ANGELES INTL (LAX)
LOS ANGELES, CALIFORNIA

AL-237 (FAA)

LOS ANGELES, CALIFORNIA
LOS ANGELES INTL (LAX)

HLYWD ONE ARRIVAL (RNAV) Arrival Routes
(HLYWD, HLYWD1) 02MAR17

SOCAL APP CON
124.05 353.775
D-ATIS ARR
133.8
LOS ANGELES TOWER
(N) 133.9 239.3
(S) 120.95 379.1



(HLYWD, HLYWD1) 17117
HLYWD ONE ARRIVAL (RNAV) Arrival Routes
AL-237 (FAA)

LOS ANGELES INTL (LAX)
LOS ANGELES, CALIFORNIA

LOS ANGELES, CALIFORNIA
LOS ANGELES INTL (LAX)

ARRIVAL ROUTE DESCRIPTION

From HLYWD on track 251° to cross BRUEN between FL240 and FL300 and at 280K, then on track 252° to cross AVATR between FL190 and FL240, then on track 249° to cross DAAAY at or above 17000, then on track 250° to cross WADUP at or above 15000, then on track 250° to cross NEILE at or above 14000, then on track 250° to cross SEAVU between 12000 and 14000 and at 270K. Expect ILS or RNAV (RNP) RWY 25L approach.

LOST COMMUNICATIONS: In the event of lost communication prior to runway assignment proceed on ILS or LOC RWY 25L.

- NOTE: RADAR required.
- NOTE: RNAV 1.
- NOTE: DME/DME/IRU or GPS required.
- NOTE: Turbojet aircraft only.
- NOTE: Los Angeles landing west traffic.
- NOTE: Expect runway 25L unless otherwise assigned by ATC.
- NOTE: Expect local area altimeter reaching FL230.

NOTE: Chart not to scale.