

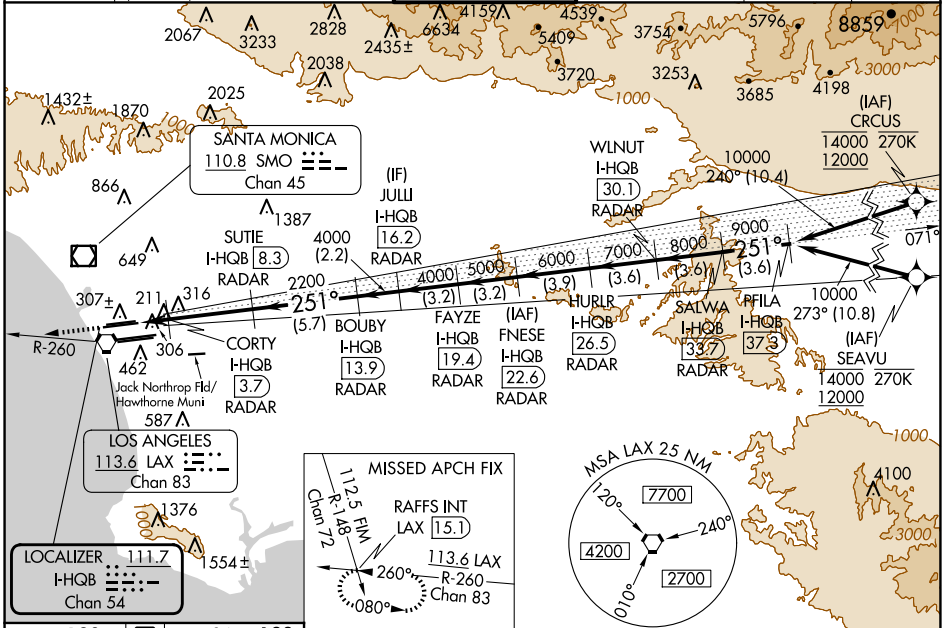
LOC/DME I-HQ B	APP CRS	Rwy Idg	24L	24R
<b>111.7</b>	<b>251°</b>	<b>9483</b>	<b>8926</b>	
Chan <b>54</b>		TDZE	<b>123</b>	<b>122</b>
		Apt Elev	<b>128</b>	<b>128</b>

# ILS or LOC RWY 24L

LOS ANGELES INTL (LAX)

RNAV 1-GPS or RADAR required for procedure entry. DME or RADAR required. From CRCUS: RNAV 1-GPS required. From SEAVU: RNAV 1-GPS required.		MALSR Rwy 24L	ALSF-2 Rwy 24R	MISSED APPROACH: Climb to 2000 on heading 251° and LAX VORTAC R-260 to RAFFS INT/LAX 15.1 DME and hold.
Simultaneous approach authorized with HHR. Inop table does not apply to Sidestep Rwy 24R Cat A and B. Simultaneous approach authorized. LOC procedure NA during simultaneous operations with HHR LOC RWY 25. For inop ALS, increase Sidestep 24R Cat C visibility to 1½ SM. For inop ALS, increase S-LOC 24L Cat C/D visibility to RVR 5500. #RVR 1800 authorized with use of FD or AP or HUD to DA.				

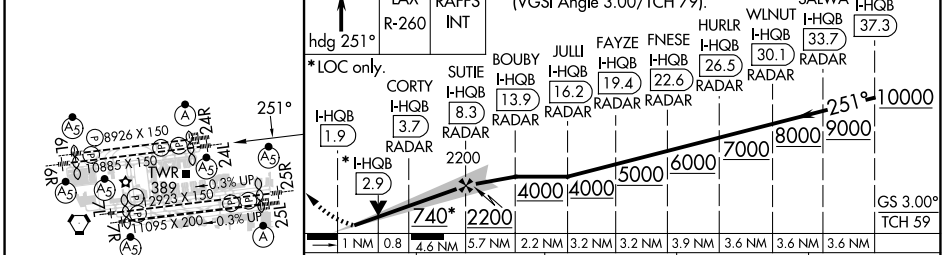
D-ATIS ARR <b>133.8</b> DEP <b>135.65</b>	SOCAL APP CON <b>124.3 363.2</b> [APCH FM WEST] <b>124.5 235.975</b> [225°-044°]	LOS ANGELES TOWER <b>N 133.9 239.3</b> <b>S 120.95 379.1</b>	GND CON <b>N 121.65 327.0</b> <b>S 121.75 327.0</b> <b>W 121.4 327.0</b>	CLNC DEL <b>120.35</b> <b>327.0</b>	CPDLC
---	--	--	---	---	-------



SW-3, 20 FEB 2025 to 20 MAR 2025

SW-3, 20 FEB 2025 to 20 MAR 2025

ELEV 128	TDZE 24L 123
	TDZE 24R 122



TDZ/CL Rwy 6L, 7L, 24R, and 25L	HRR all Rwy				
FAF to MAP 6.4 NM					
Knots	60	90	120	150	180
Min:Sec	6:24	4:16	3:12	2:34	2:08
S-ILS 24L#	323/24				200 (200-½)
S-LOC 24L	500/24		377 (400-½)		500/35 377 (400-¾)
SIDESTEP 24R	500/55 378 (400-1)			500-1½ 378 (400-1½)	