

LOC/DME I-OSS 108.5 Chan 22	APP CRS 251°	Rwy Idg 8926 9483 TDZE 122 123 Apt Elev 128 128
---	------------------------	---

ILS or LOC RWY 24R

LOS ANGELES INTL (LAX)

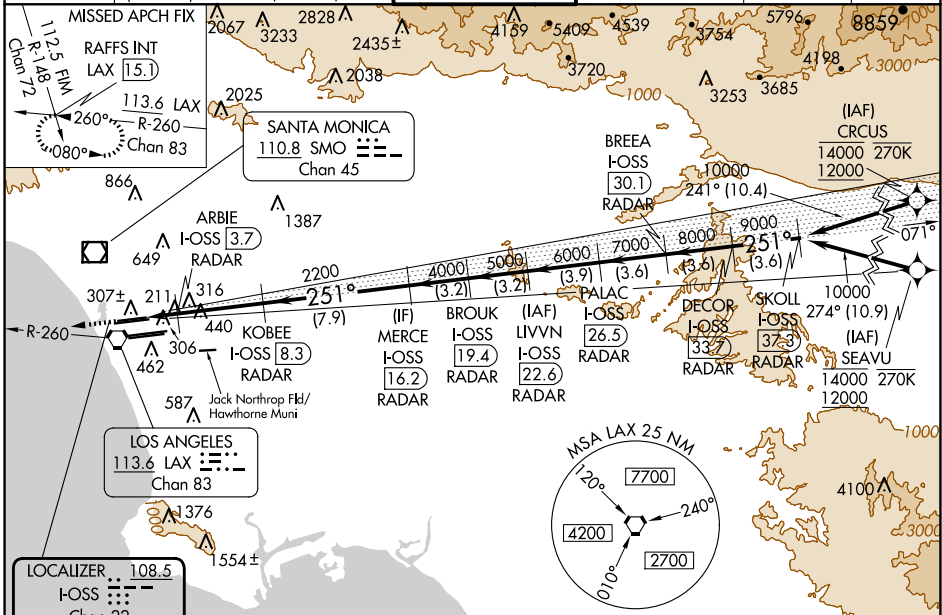
From CRCLUS, SEAVU: RNAV 1-GPS required. DME or RADAR required.

Simultaneous approach authorized with HHR. LOC procedure NA during simultaneous operations with HHR LOC RWY 25. Simultaneous approach authorized. For inop ALS, increase S-LOC 24R Cat C/D visibility to RVR 5500.



MISSED APPROACH: Climb to 2000 on heading 251° and LAX VORTAC R-260 to RAFFS INT/LAX 15.1 DME and hold.

D-ATIS ARR 133.8 DEP 135.65	SOCAL APP CON 124.3 363.2 [APCH FM WEST] [225°-044°] 124.9 269.0 [090°-224°] 124.5 235.975 [045°-089°] 128.5 360.7	LOS ANGELES TOWER N 133.9 239.3 S 120.95 379.1	GND CON N 121.65 327.0 S 121.75 327.0 W 121.4 327.0	CLNC DEL 120.35 327.0	CPDLC
---	--	--	---	---	-------



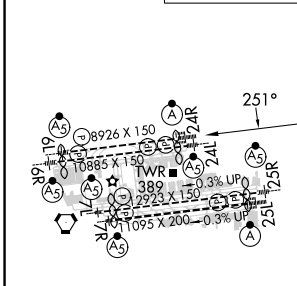
SW-3, 20 FEB 2025 to 20 MAR 2025

SW-3, 20 FEB 2025 to 20 MAR 2025

ELEV 128	TDZE 24R 122
	TDZE 24L 123

↑ 2000
hdg 251°

VGSI and ILS glidepath not coincident (VGSI Angle 3.00/TCH 73).



LAX R-260	RAFFS INT	BROOK I-OSS [19.4] RADAR	LIVVN I-OSS [22.6] RADAR	PALAC I-OSS [26.5] RADAR	BREA I-OSS [30.1] RADAR	SKOLL I-OSS [37.3] RADAR
ARBIE I-OSS [3.7] RADAR	KOBEE I-OSS [8.3] RADAR	MERC I-OSS [16.2] RADAR	BROOK I-OSS [19.4] RADAR	LIVVN I-OSS [22.6] RADAR	PALAC I-OSS [26.5] RADAR	BREA I-OSS [30.1] RADAR
I-OSS [2.9]	I-OSS [3.7]	I-OSS [8.3]	I-OSS [16.2]	I-OSS [19.4]	I-OSS [22.6]	I-OSS [26.5]
0.9	0.9	4.6 NM	7.9 NM	3.2 NM	3.2 NM	3.9 NM
CATEGORY A		CATEGORY B		CATEGORY C		CATEGORY D
S-ILS 24R		322/18		200 (200-½)		
S-LOC 24R		480/24		358 (400-½)		480/30 358 (400-¾)
SIDESTEP 24L		500/55		377 (400-1)		500-1½ 377 (400-1½)

TDZ/CL Rwy 6L, 7L, 24R, and 25L
HIRL all Rwy

FAF to MAP 6.4 NM

Knots	60	90	120	150	180
Min:Sec	6:24	4:16	3:12	2:34	2:08

LOS ANGELES INTL (LAX) ILS or LOC RWY 24R