

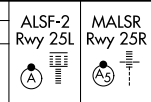
LOC/DME I-LAX	APP CRS	Rwy ldg	25L	25R
109.9	251°	11095	11134	
Chan 36		TDZE	104	104
		Apt Elev	128	128

ILS or LOC RWY 25L

LOS ANGELES INTL (LAX)

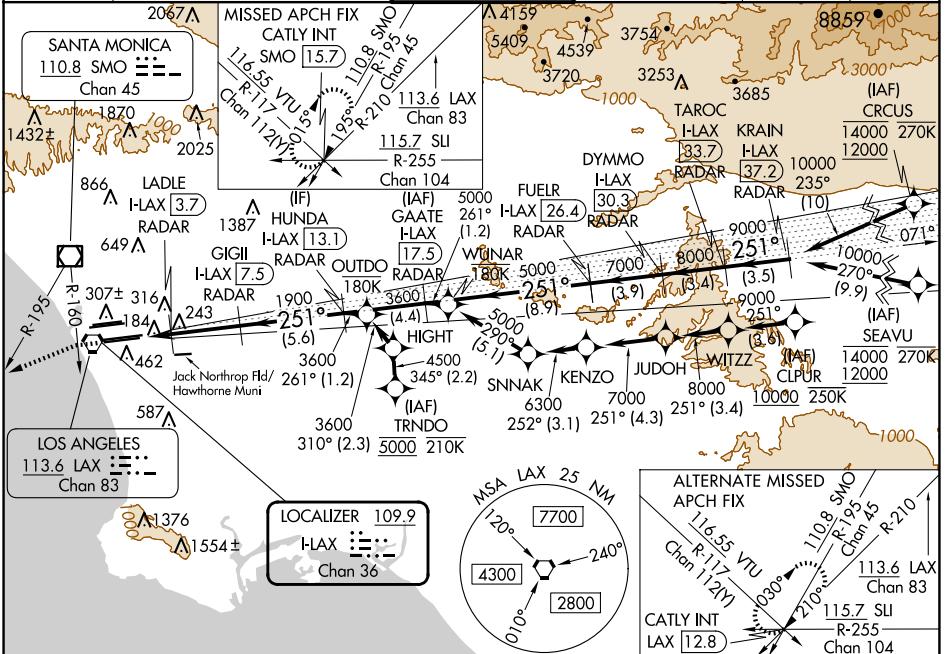
RNP APCH - GPS. From CLIPUR or CRUCUS or SEAVU or TRNDO. DME or RADAR required.

Simultaneous approach authorized. Simultaneous approach authorized with HHR.

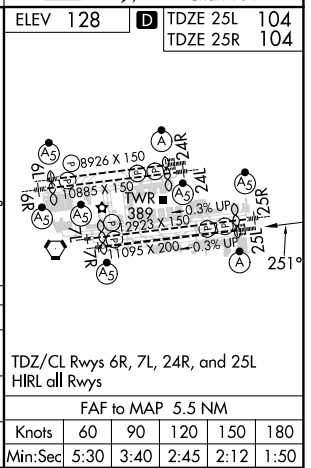


MISSED APPROACH: Climb to 2000 on heading 251° until crossing the SMO R-160, then left turn on heading 236° and on the SMO R-195 to CATLY INT/ SMO 15.7 DME and hold.

D-ATIS	SOCAL APP CON		LOS ANGELES TOWER		GND CON		CLNC DEL	CPDLC
ARR 133.8	124.3 363.2	124.9 269.0	N 133.9 239.3	S 120.95 379.1	N 121.65 327.0	S 121.75 327.0	120.35 327.0	
DEP 135.65	124.5 235.975	128.5 360.7			W 121.4 327.0			



2000	SMO	SMO	CATLY	TAROC	KRAIN
hdg 251°	R-160	R-195	INT	I-LAX	I-LAX
				33.7	37.2
				RADAR	RADAR
	LADLE	GIGLI	HUNDA	FUELR	DYMMO
	I-LAX 3.7	I-LAX 7.5	I-LAX 13.1	I-LAX 17.5	I-LAX 26.4
	RADAR	RADAR	RADAR	RADAR	RADAR
					25.1
					10000
					9000
					7000
					8000
					5000
					3600
					1900
					700
					1900
					3600
					5000
					7000
					8000
					9000
					10000
					GS 3.00°
					TCH 54
					1 NM 0.8
					3.7 NM
					5.6 NM
					4.4 NM
					8.9 NM
					3.9 NM
					3.4 NM
					3.5 NM
CATEGORY	A	B	C	D	
S-ILS 25L	304/18 200 (200-1/2)				
S-LOC 25L	480/24 376 (400-1/2)		480/35 376 (400-3/4)		
SIDESTEP 25R	480/55 376 (400-1)		480-1 1/2 376 (400-1 1/2)		



SW-3, 20 FEB 2025 to 20 MAR 2025

SW-3, 20 FEB 2025 to 20 MAR 2025