

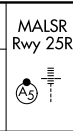
LOC/DME I-FCN 111.1 Chan 48	APP CRS 251°	Rwy ldg 11134	25R 11095	25L 11095
		TDZE 104	104	104
		Apt Elev 128	128	128

ILS or LOC RWY 25R

LOS ANGELES INTL (LAX)

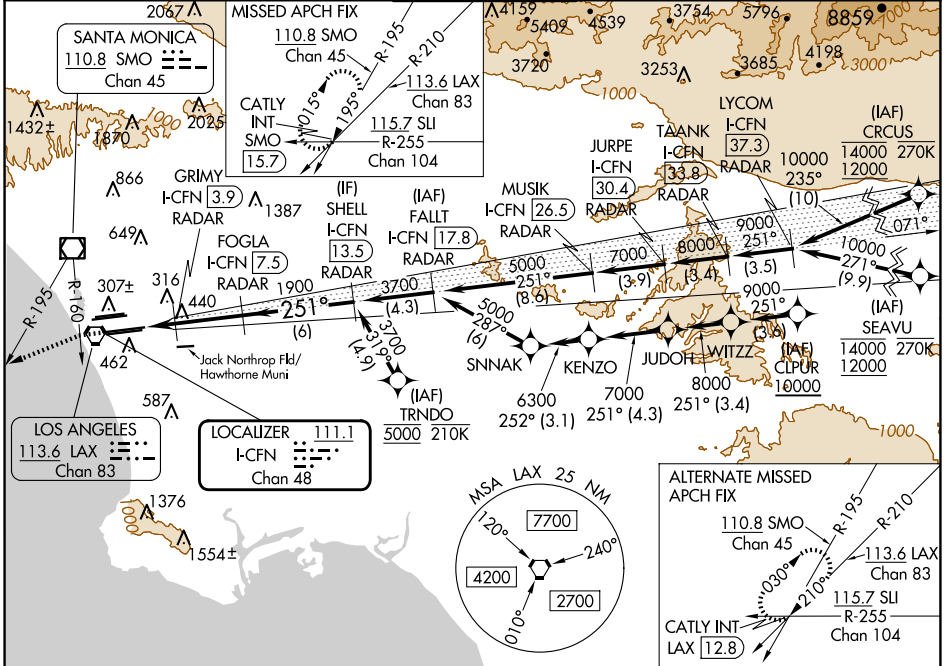
From CRCUS, SEAVU, TRNDO, CLPUR, CLPUR: RNAV 1-GPS required.
DME or RADAR required.

Simultaneous approach authorized. Simultaneous approach authorized with HHR. For inop ALS increase Sidestep 25L Cat C visibility to 1½ SM. #RVR 1800 authorized with use of FD or AP or HUD to DA.



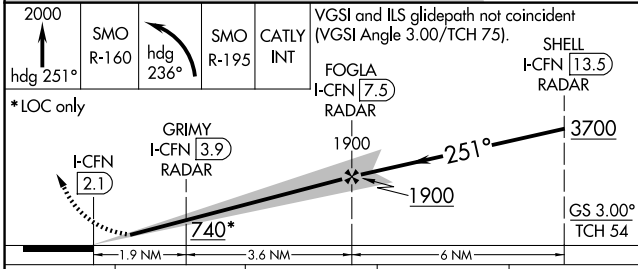
MISSED APPROACH: Climb to 2000 on heading 251° until crossing SMO R-160 then left turn on heading 236° and SMO VOR/DME R-195 to CATLY INT/SMO 15.7 DME and hold.

D-ATIS ARR 133.8 DEP 135.65	SOCAL APP CON 124.3 363.2 (225°-044°)	SOCAL APP CON 124.9 269.0 (090°-224°)	LOS ANGELES TOWER N 133.9 239.3 S 120.95 379.1	GND CON N 121.65 327.0 S 121.75 327.0 W 121.4 327.0	CLNC DEL 120.35 327.0	CPDLC
---	--	--	--	---	---	-------



SW-3, 20 FEB 2025 to 20 MAR 2025

SW-3, 20 FEB 2025 to 20 MAR 2025



CATEGORY	A	B	C	D
S-ILS 25R#	304/24 200 (200-½)			
S-LOC 25R	700/24 596 (600-½)	700-1¼ 596 (600-1¼)		
SIDESTEP 25L	700/55 596 (600-1)	700-1¼ 596 (600-1¼)		

ELEV 128 **D** TDZE 25R 104
TDZE 25L 104

ALTERNATE MISSED APCH FIX

110.8 SMO Chan 45
113.6 LAX Chan 83
115.7 SLI R-255 Chan 104
CATLY INT-LAX [12.8]

MSA LAX 25 NM
7700
4200
2700

GS 3.00°
TCH 54

TDZ/CL Rwyys 6R, 7L, 24R, and 25L
HIRL all Rwyys

FAF to MAP 5.5 NM

Knots	60	90	120	150	180
Min:Sec	5:30	3:40	2:45	2:12	1:50