

LOC/DME I-MKZ	APP CRS	Rwy Idg	7R	7L
109.9	071°		11095	11259
Chan 36		TDZE	128	128
		Apt Elev	128	128

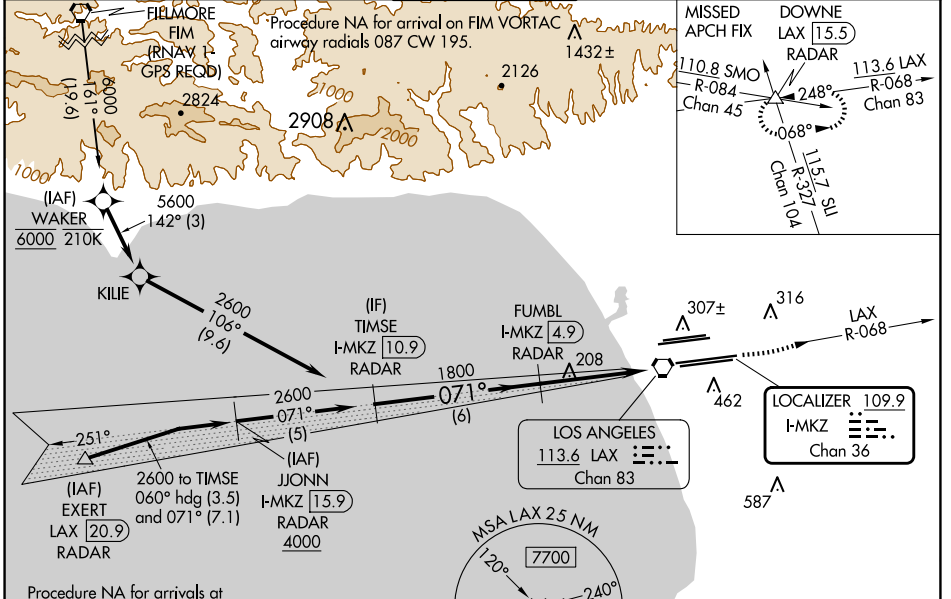
ILS or LOC RWY 7R

LOS ANGELES INTL (LAX)

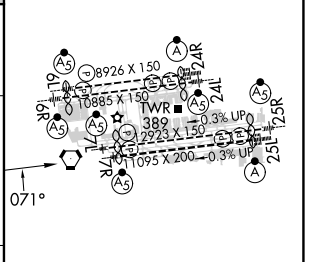
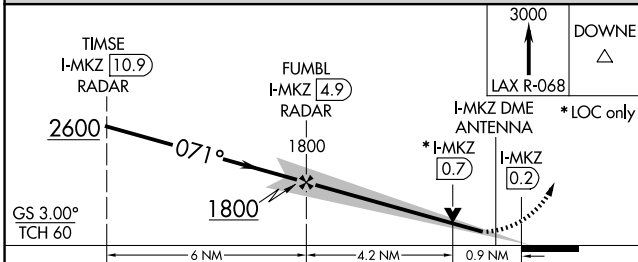
Simultaneous approach authorized. DME or RADAR required. Inop table does not apply to Sidestep Rwy 7L Cats A and B. # RVR 1800 authorized with use of FD or AP or HUD to DA.

MALS Rwy 7R	MALS Rwy 7L	MISSED APPROACH: Climb to 3000 on LAX VORTAC R-068 to DOWNE INT/ LAX 15.5 DME/RADAR and hold.
-------------	-------------	---

D-ATIS ARR 133.8 DEP 135.65	SOCAL APP CON 124.3 363.2 (APCH FM WEST) 124.5 235.975 (225°-044°)	124.9 269.0 (090°-224°) 128.5 360.7 (045°-089°)	LOS ANGELES TOWER N 133.9 239.3 S 120.95 379.1	GND CON N 121.65 327.0 S 121.75 327.0 W 121.4 327.0	CLNC DEL 120.35 327.0	CPDLC
---	--	--	--	---	---	-------



ELEV 128	TDZE 7R 128
	TDZE 7L 128



CATEGORY	A	B	C	D
S-ILS 7R#	328/24 200 (200-1/2)			
S-LOC 7R	460/24	332 (400-1/2)	460/26	332 (400-1/2)
SIDESTEP 7L	520/55 392 (400-1)		520-1 1/2 392 (400-1/2)	

TDZ/CL Rwy's 6R, 7L, 24R, and 25L HIRL all Rwy's

FAF to MAP 5.1 NM

Knots	60	90	120	150	180
Min:Sec	5:06	3:24	2:33	2:02	1:42

SW-3, 20 FEB 2025 to 20 MAR 2025

SW-3, 20 FEB 2025 to 20 MAR 2025