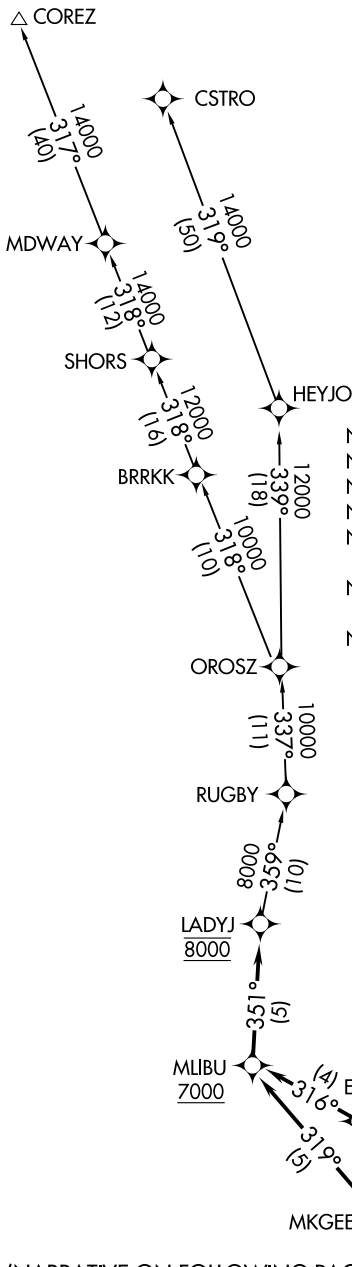


**TOP ALTITUDE:  
8000**

D-ATIS DEP 135.65  
 CLNC DEL 120.35 327.0  
 CPDLC  
 GND CON (N) 121.65 327.0  
 (S) 121.75 327.0  
 (W) 121.4 327.0  
 LOS ANGELES TOWER (N) 133.9 239.3  
 (S) 120.95 379.1  
 SOCIAL DEP CON 124.3 363.2 (045°-224°)  
 125.2 263.025 (225°-044°)



NOTE: DME/DME/IRU or GPS required.  
 NOTE: RADAR required.  
 NOTE: RNAV 1.  
 NOTE: Restricted to turbojet aircraft only.  
 NOTE: Some departures may be RADAR vectored to MLIBU, LADYJ, or OROSZ.  
 NOTE: Maintain at or below 250K unless otherwise directed by ATC.  
 NOTE: Use the DARRK, SUMMR, or VENTURA DEPARTURE during the time periods of 2100-0700 local in lieu of the LADYJ DEPARTURE.

TAKEOFF MINIMUMS

Rwys 6L/R, 7L/R: NA-ATC.

Rwys 24L/R, 25L/R: Standard with minimum climb of 500' per NM to 640.

(NARRATIVE ON FOLLOWING PAGE)

NOTE: Chart not to scale.



DEPARTURE ROUTE DESCRIPTION

TAKEOFF RUNWAY 24L: Climb heading 251° to 640, then climb direct to cross DLREY at or below 3000, then on track 256° to cross ENNEY at or below 5000, then on track 253° to EYENO, then on track 316° to cross MLIBU at or above 7000, then on track 351° to cross LADYJ at 8000, thence. . . .

TAKEOFF RUNWAY 24R: Climb heading 251° to 640, then climb direct to cross FABRA at or below 3000, then on track 253° to cross ENNEY at or below 5000, then on track 253° to EYENO, then on track 316° to cross MLIBU at or above 7000, then on track 351° to cross LADYJ at 8000, thence. . . .

TAKEOFF RUNWAY 25L: Climb heading 251° to 640, then climb direct to cross HIIPR at or below 3000, then on track 256° to cross EVOSE at or below 5000, then on track 252° to MKGEE, then on track 319° to cross MLIBU at or above 7000, then on track 351° to cross LADYJ at 8000, thence. . . .

TAKEOFF RUNWAY 25R: Climb heading 251° to 640, then climb direct to cross DOCKR at or below 3000, then on track 252° to cross EVOSE at or below 5000, then on track 252° to MKGEE, then on track 319° to cross MLIBU at or above 7000, then on track 351° to cross LADYJ at 8000, thence. . . .

. . . .on (transition) maintain 8000. Expect filed altitude 5 minutes after departure.

COREZ TRANSITION (LADYJ4.COREZ)

CSTRO TRANSITION (LADYJ4.CSTRO)

SW-3, 20 FEB 2025 to 20 MAR 2025

SW-3, 20 FEB 2025 to 20 MAR 2025