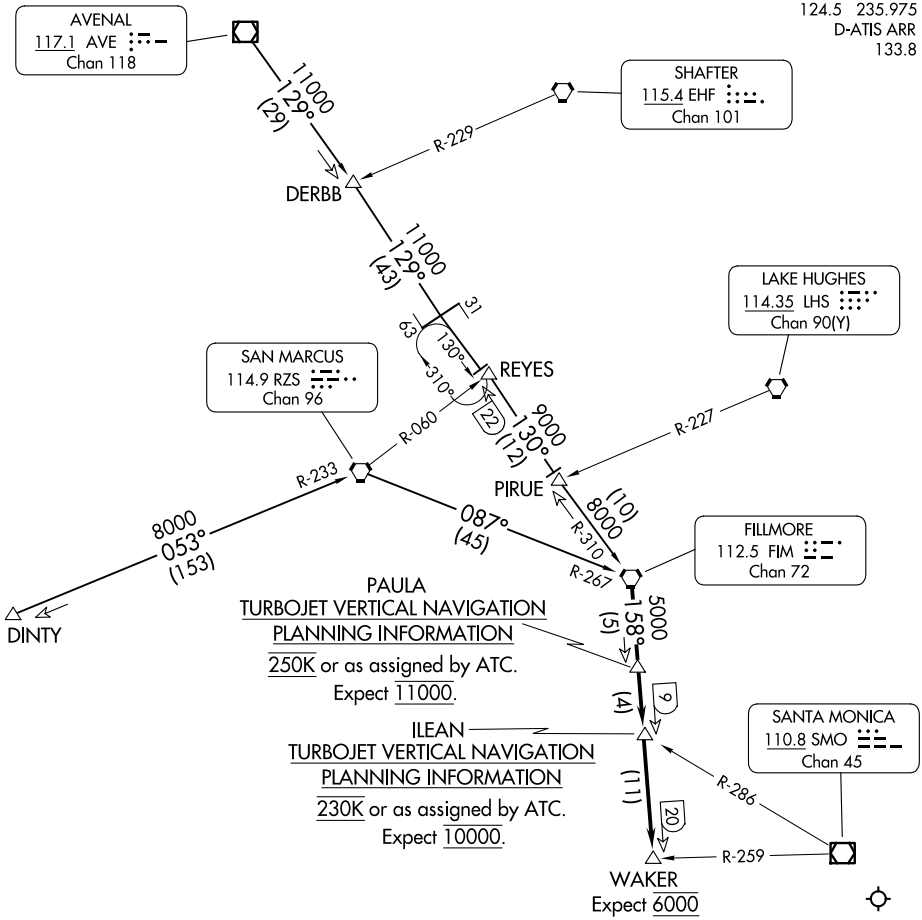


# MOORPARK FOUR ARRIVAL

AL-237 (FAA)

LOS ANGELES INTL (LAX)  
LOS ANGELES, CALIFORNIA

SOCAL APP CON  
124.5 235.975  
D-ATIS ARR  
133.8



NOTE: DME or RADAR required.  
NOTE: Chart not to scale.

## ARRIVAL ROUTE DESCRIPTION

**AVENAL TRANSITION (AVE.MOOR4):** From over AVE VOR/DME on AVE R-129 and FIM R-310 to FIM VORTAC. Thence. . .

**DERBB TRANSITION (DERBB.MOOR4):** From over DERBB INT on AVE R-129 and FIM R-310 to FIM VORTAC. Thence. . .

**DINTY TRANSITION (DINTY.MOOR4):** From over DINTY INT on RZS R-233 to RZS VORTAC. Then on RZS R-087 and FIM R-267 to FIM VORTAC. Thence. . .

. . . From over FIM VORTAC via FIM R-158 to WAKER INT. For Runways 6L/R or 7L/R: From WAKER INT expect vector to final approach course for Los Angeles Intl Airport.

# MOORPARK FOUR ARRIVAL

SW-3, 20 FEB 2025 to 20 MAR 2025

SW-3, 20 FEB 2025 to 20 MAR 2025