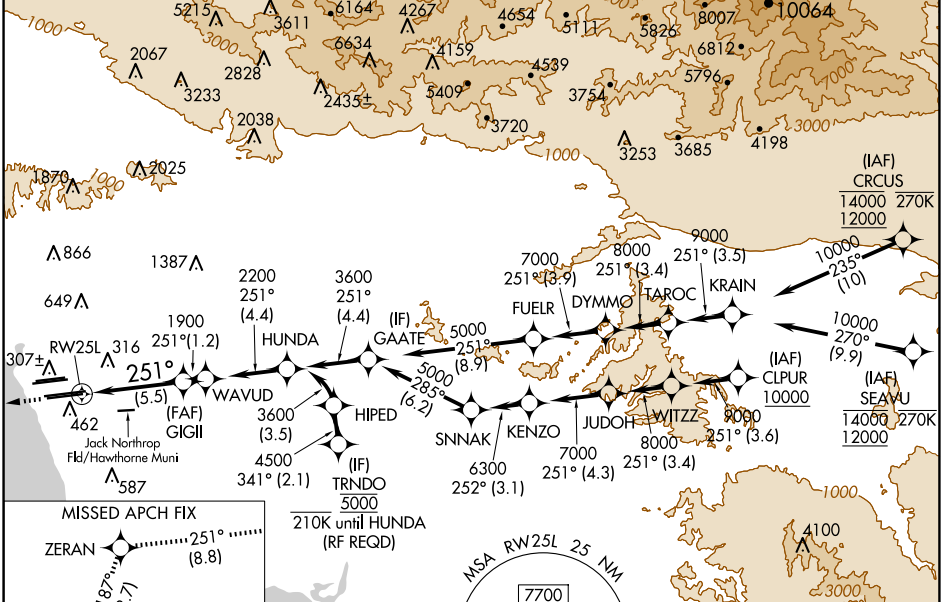


APP CRS	Rwy Idg	11095
251°	TDZE	104
	Apf Elev	128

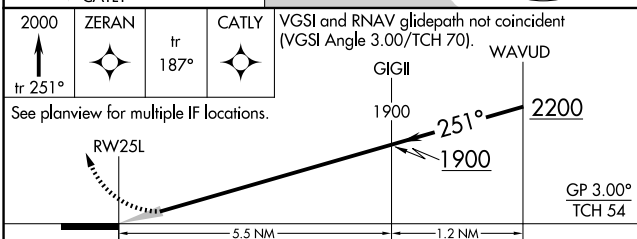
RNAV (RNP) Z RWY 25L

LOS ANGELES INTL (LAX)

RNP AR APCH.		ALSF-2		MISSED APPROACH: Climb to 2000 on track 251° to ZERAN and on track 187° to CATLY and hold.	
<p>GPS required. For uncompensated Baro-VNAV systems, procedure NA below 5°C or above 54°C. Simultaneous approach authorized. Simultaneous approach authorized with HHR.</p>		<p>GPS required. For uncompensated Baro-VNAV systems, procedure NA below 5°C or above 54°C. Simultaneous approach authorized. Simultaneous approach authorized with HHR.</p>			
D-ATIS	SOCAL APP CON		LOS ANGELES TOWER		GND CON
ARR 133.8	124.3	363.2	124.9	269.0	N 121.65 327.0
DEP 135.65	(APCH FM WEST) 124.5 235.975		(090°-224°) N 133.9 239.3		S 121.75 327.0
	(225°-044°) 128.5 360.7		(045°-089°) S 120.95 379.1		W 121.4 327.0
					CINC DEL 120.35 327.0
					CPDLC

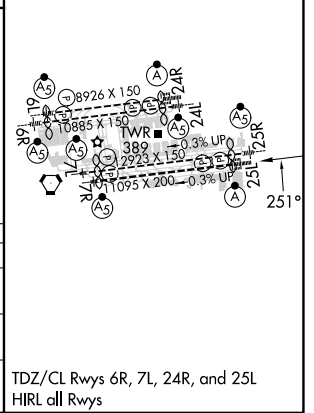


ELEV 128	D	TDZE 104
----------	----------	----------



CATEGORY	A	B	C	D
RNP 0.15 DA		445/30	341 (400-5%)	
RNP 0.30 DA		543/50	439 (500-1)	

AUTHORIZATION REQUIRED



TDZ/CL Rwws 6R, 7L, 24R, and 25L
HIRL all Rwws

SW-3, 20 FEB 2025 to 20 MAR 2025

SW-3, 20 FEB 2025 to 20 MAR 2025