


APP CRS	Rwy Idg	<b>8566</b>
<b>071°</b>	TDZE	<b>119</b>
	Apt Elev	<b>128</b>

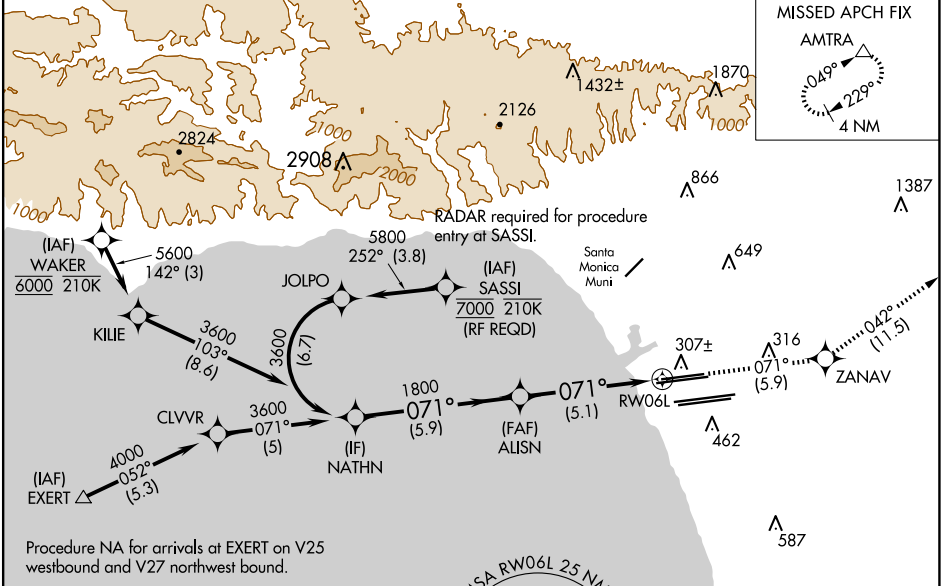
# RNAV (RNP) Z RWY 6L

LOS ANGELES INTL (LAX)

**▼** For uncompensated Baro-VNAV systems, procedure NA below 5°C (41°F) or above 54°C (130°F). Simultaneous approach authorized. GPS required. For inop MALSR, increase RNP 0.30 all Cats visibility to RVR 6000.

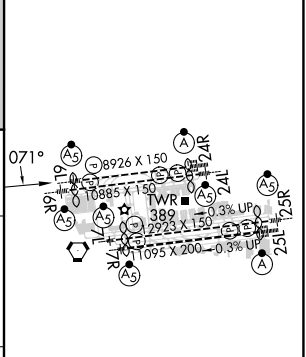
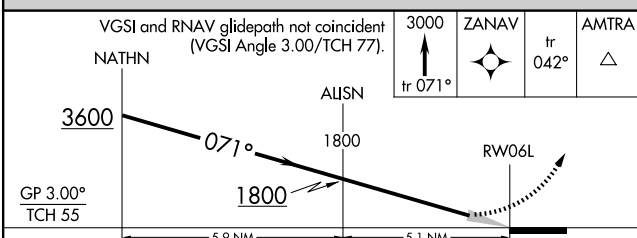
**MALSR**  
  
**MISSED APPROACH:** Climb to 3000 on track 071° to ZANAV and on track 042° to AMTRA and hold.

D-ATIS	SOCAL APP CON	LOS ANGELES TOWER	GND CON	CLNC DEL	CPDLC
ARR <b>133.8</b>	<b>124.3 363.2</b> (APCH FM WEST)	<b>124.9 269.0</b> (090°-224°)	<b>N 121.65 327.0</b> <b>S 121.75 327.0</b> <b>W 121.4 327.0</b>	<b>120.35</b> <b>327.0</b>	
DEF <b>135.65</b>	<b>124.5 235.975</b> (225°-044°)	<b>128.5 360.7</b> (045°-089°)			



Procedure NA for arrivals at EXERT on V25 westbound and V27 northwest bound.

ELEV 128	<b>D</b> TDZE 119
----------	-------------------



CATEGORY	A	B	C	D
RNP 0.30 DA		484/40	365 (400-¾)	

## AUTHORIZATION REQUIRED

TDZ/CL Rwy's 6R, 7L, 24R, and 25L  
 HIRL all Rwy's

SW-3, 20 FEB 2025 to 20 MAR 2025

SW-3, 20 FEB 2025 to 20 MAR 2025