

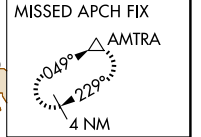
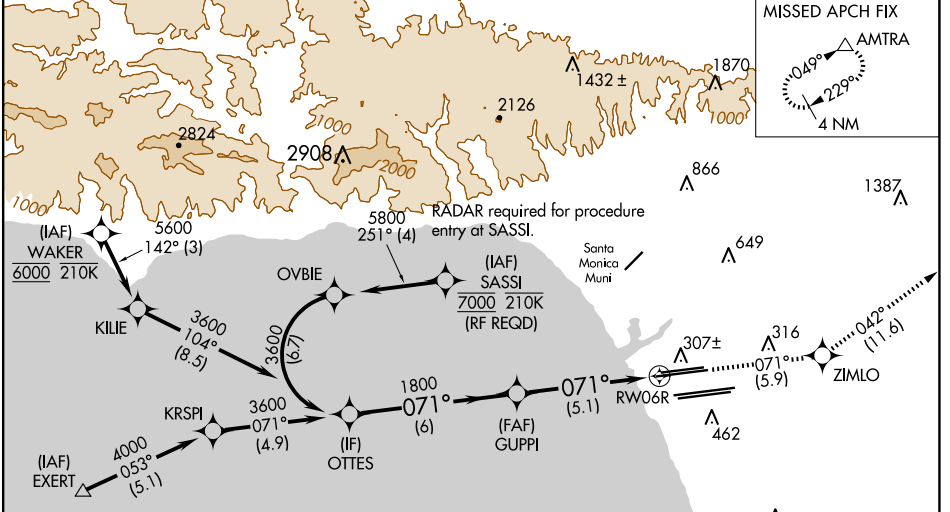
APP CRS	Rwy Idg	<b>9748</b>
<b>071°</b>	TDZE	<b>116</b>
	Apt Elev	<b>128</b>

# RNAV (RNP) Z RWY 6R

LOS ANGELES INTL (LAX)

<p>▼ For uncompensated Baro-VNAV systems, procedure NA below 5°C (41°F) or above 54°C (130°F). GPS required. Simultaneous approach authorized. For inop ALS, increase RNP 0.30 all Cats visibility to RVR 6000.</p>	<p>MALSR</p>	<p>MISSED APPROACH: Climb to 3000 on track 071° to ZIMLO and on track 042° to AMTRA and hold.</p>

D-ATIS	SOCAL APP CON		LOS ANGELES TOWER		GND CON		CLNC DEL	CPDLC
ARR <b>133.8</b>	<b>124.3 363.2</b>	<b>124.9 269.0</b>	<b>N 133.9 239.3</b>	<b>N 121.65 327.0</b>	<b>S 121.75 327.0</b>	<b>W 121.4 327.0</b>	<b>120.35 327.0</b>	
DEP <b>135.65</b>	<b>124.5 235.975</b>	<b>128.5 360.7</b>	<b>S 120.95 379.1</b>					
	(APCH FM WEST)	(090°-224°)						
	(225°-044°)	(045°-089°)						



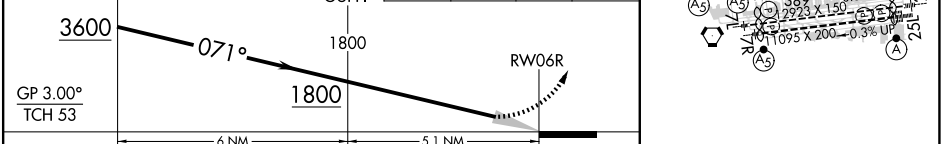
Procedure NA for arrivals at EXERT on V25 westbound and V27 northwest bound.

MSA R W06R 2.5 NM

ELEV 128 TDZE 116



VGSi and RNAV glidepath not coincident (VGSi Angle 3.00/TCH 69).	3000	ZIMLO	AMTRA
OTTES	tr 071°	tr 042°	△



CATEGORY	A	B	C	D
RNP 0.30 DA		471/40	355 (400-¾)	

**AUTHORIZATION REQUIRED**

TDZ/CL Rwy 6R, 7L, 24R, and 25L  
HIRL all Rwy's

SW-3, 20 FEB 2025 to 20 MAR 2025

SW-3, 20 FEB 2025 to 20 MAR 2025