

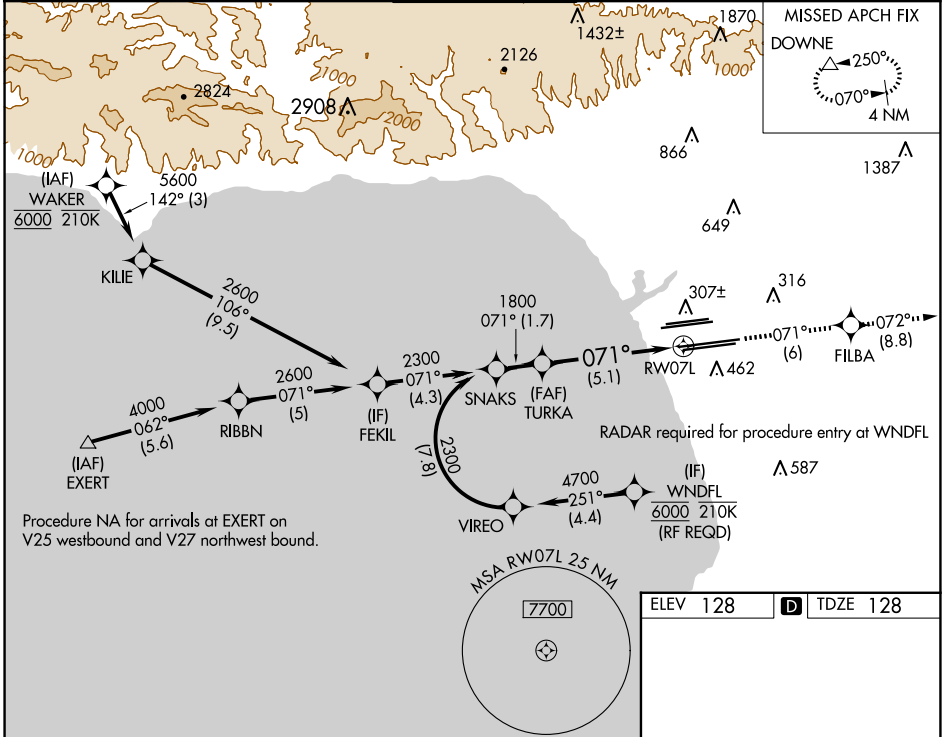
APP CRS	Rwy Idg	<b>11259</b>
<b>071°</b>	TDZE	<b>128</b>
	Apt Elev	<b>128</b>

# RNAV (RNP) Z RWY 7L

LOS ANGELES INTL (LAX)

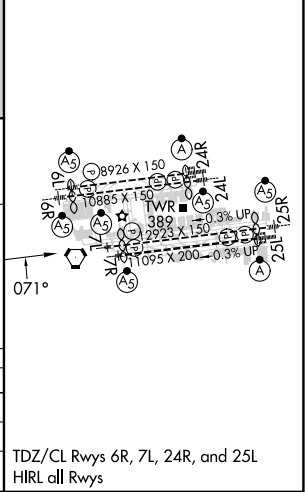
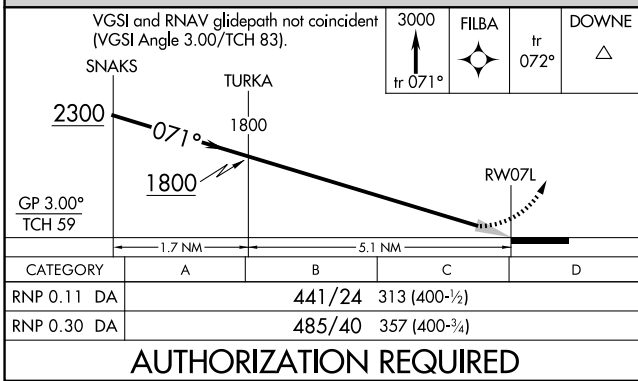
<p><b>▽</b> For uncompensated Baro-VNAV systems, procedure NA below 5°C (41°F) or above 54°C (130°F). GPS required. Simultaneous approach authorized. For inop ALS, increase RNP 0.11 all Cats visibility to RVR 5000 and RNP 0.30 all Cats visibility to RVR 6000.</p>		<p>MISSED APPROACH: Climb to 3000 on track 071° to FILBA and on track 072° to DOWNE and hold.</p>

D-ATIS	SOCL APP CON	LOS ANGELES TOWER	GND CON	CLNC DEL	CPDLC
ARR <b>133.8</b>	<b>124.3 363.2</b> (APCH FM WEST)	<b>124.9 269.0</b> (090°-224°)	<b>N 133.9 239.3</b> <b>S 120.95 379.1</b>	<b>N 121.65 327.0</b> <b>S 121.75 327.0</b> <b>W 121.4 327.0</b>	<b>120.35</b> <b>327.0</b>
DEP <b>135.65</b>	<b>124.5 235.975</b> (225°-044°)	<b>128.5 360.7</b> (045°-089°)			



Procedure NA for arrivals at EXERT on V25 westbound and V27 northwest bound.

ELEV 128	<b>D</b> TDZE 128
----------	-------------------



TDZ/CL Rwy 6R, 7L, 24R, and 25L  
HIRL all Rwy

SW-3, 20 FEB 2025 to 20 MAR 2025

SW-3, 20 FEB 2025 to 20 MAR 2025