

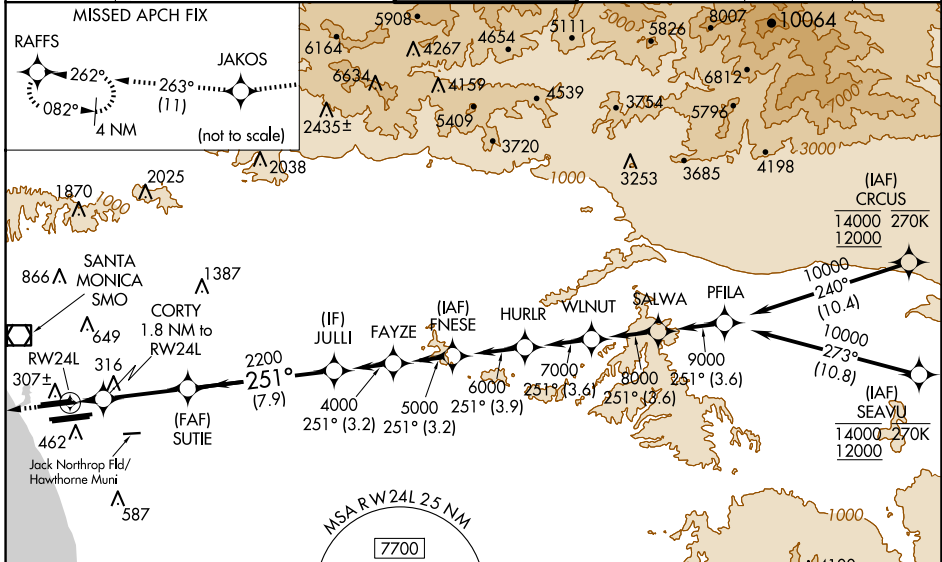
WAAS CH 56407 W24B	APP CRS 251°	Rwy Idg TDZE Apt Elev	9483 123 128
--	------------------------	-----------------------------	---

RNAV (GPS) Y RWY 24L

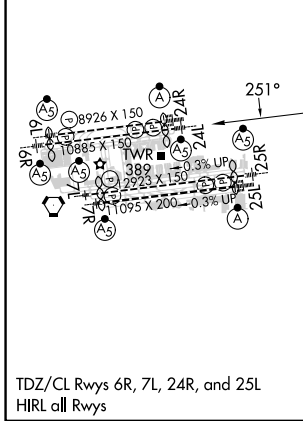
LOS ANGELES INTL (LAX)

RNP APCH.	<p>Simultaneous approach authorized. LNAV procedure NA during simultaneous operations. Use of FD or AP providing RNAV track guidance required during simultaneous operations. Simultaneous approach authorized with HHR. For uncompensated Baro-VNAV systems, LNAV/VNAV NA below 5°C or above 54°C. For inop ALS, increase LNAV/VNAV all Cats visibility to 1½ SM. #RVR 1800 authorized with use of FD or AP or HUD to DA.</p>	<p>MALSR</p>	<p>MISSED APPROACH: Climb to 2000 direct JAKOS and on track 263° to RAFFS and hold.</p>
-----------	--	--------------	---

D-ATIS ARR 133.8 DEP 135.65	SOCAL APP CON 124.3 363.2 (APCH FM WEST) 124.9 269.0 (090°-224°) 128.5 360.7 (045°-089°)	LOS ANGELES TOWER N 133.9 239.3 S 120.95 379.1	GND CON N 121.65 327.0 S 121.75 327.0 W 121.4 327.0	CLNC DEL 120.35 327.0	CPDLC
---	---	--	---	---	-------



ELEV 128	D	TDZE 123
----------	----------	----------



2000	JAKOS	tr 263°	RAFFS	VGSI and RNAV glidepath not coincident (VGSI Angle 3.00/TCH 79).
*LNAV only				JULLI 4000
RWY 24L	CORTY 1.8 NM to RWY 24L	SUTIE 2200	JULLI 4000	GP 3.00° TCH 59
	740*	2200		
	1.8 NM	4.6 NM	7.9 NM	

CATEGORY	A	B	C	D
LPV DA#		323/24	200 (200-½)	
LNAV/VNAV DA		608/50	485 (500-1)	
LNAV MDA	660/24	537 (600-½)	660/55	537 (600-1)

SW-3, 20 FEB 2025 to 20 MAR 2025

SW-3, 20 FEB 2025 to 20 MAR 2025