

ZILLI FIVE DEPARTURE (RNAV)  
(ZILLI5 ZILLI) 23FEB23

D-ATIS DEP  
135.65  
CLNC DEL  
120.35 327.0  
CPDLC  
GND CON  
(N) 121.65 327.0  
(S) 121.75 327.0  
(W) 121.4 327.0  
LOS ANGELES TOWER  
(N) 133.9 239.3  
(S) 120.95 379.1  
SOCAL DEP CON  
124.3 363.2 (045°-224°)  
125.2 263.025 (225°-044°)

RNAV 1- GPS.  
RADAR required.

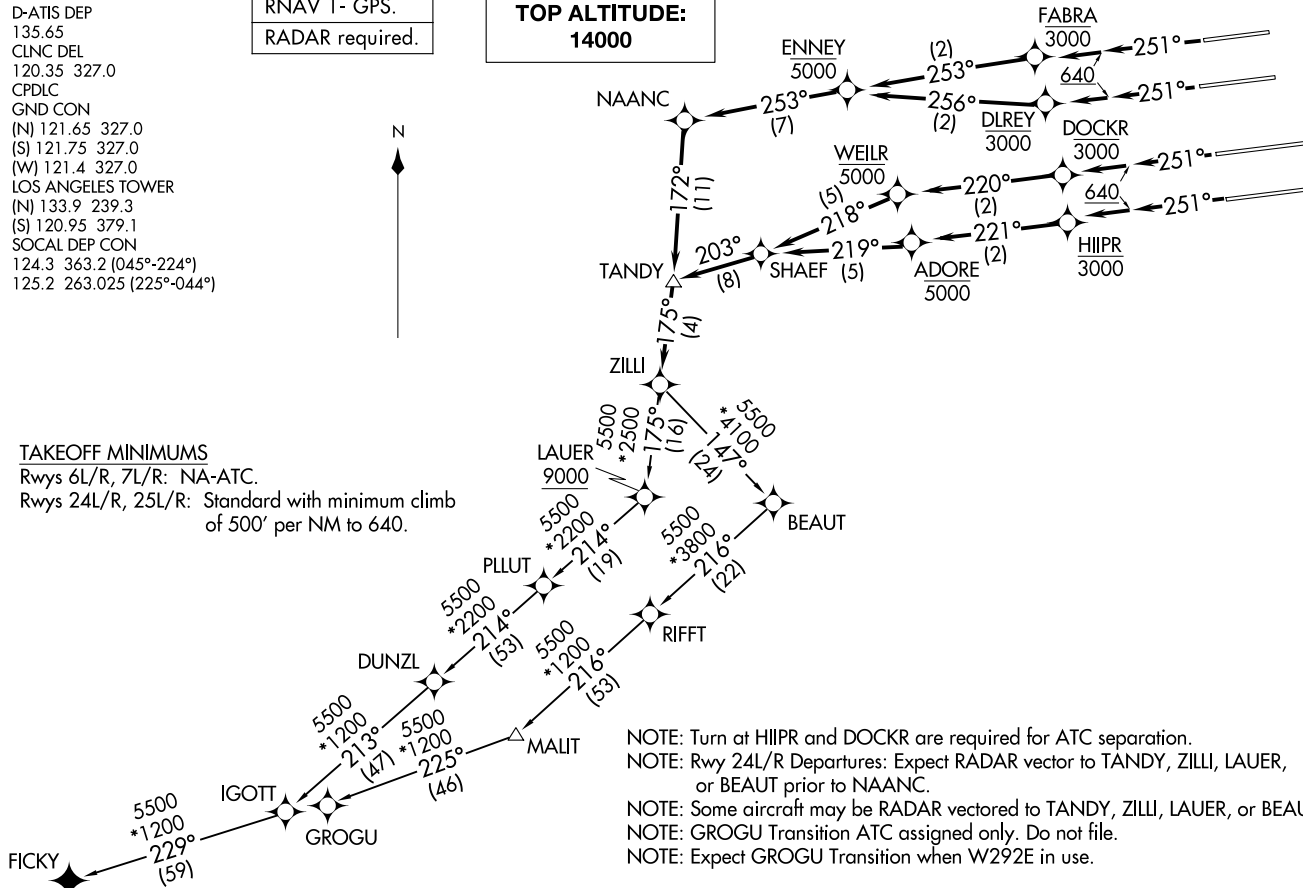
**TOP ALTITUDE:  
14000**



**TAKEOFF MINIMUMS**

Rwys 6L/R, 7L/R: NA-ATC.  
Rwys 24L/R, 25L/R: Standard with minimum climb of 500' per NM to 640.

LOS ANGELES, CALIFORNIA  
LOS ANGELES INTL (LAX)



NOTE: Turn at HIIPR and DOCKR are required for ATC separation.  
NOTE: Rwy 24L/R Departures: Expect RADAR vector to TANDY, ZILLI, LAUER, or BEAUT prior to NAANC.  
NOTE: Some aircraft may be RADAR vectored to TANDY, ZILLI, LAUER, or BEAUT.  
NOTE: GROGU Transition ATC assigned only. Do not file.  
NOTE: Expect GROGU Transition when W292E in use.

(NARRATIVE ON FOLLOWING PAGE)

NOTE: Chart not to scale.

ZILLI5 ZILLI) 23054  
ZILLI FIVE DEPARTURE (RNAV)

AL-237 (FAA)

LOS ANGELES, CALIFORNIA  
LOS ANGELES INTL (LAX)



DEPARTURE ROUTE DESCRIPTION

TAKEOFF RUNWAY 24L: Climb on heading 251° to 640, then climb direct to cross DLREY at or below 3000, then on track 256° to cross ENNEY at or below 5000, then on depicted route to ZILLI, thence . . . .

TAKEOFF RUNWAY 24R: Climb on heading 251° to 640, then climb direct to cross FABRA at or below 3000, then on track 253° to cross ENNEY at or below 5000, then on depicted route to ZILLI, thence . . . .

TAKEOFF RUNWAY 25L: Climb on heading 251° to 640, then climb direct to cross HIIIPR at or below 3000, then on track 221° to cross ADORE at or below 5000, then on depicted route to ZILLI, thence . . . .

TAKEOFF RUNWAY 25R: Climb on heading 251° to 640, then climb direct to cross DOCKR at or below 3000, then on track 220° to cross WEILR at or below 5000, then on depicted route to ZILLI, thence . . . .

. . . . on (transition). Maintain 14000, expect filed altitude five minutes after departure.

FICKY TRANSITION (ZILLI5.FICKY)

GROGU TRANSITION (ZILLI5.GROGU)

SW-3, 20 FEB 2025 to 20 MAR 2025

SW-3, 20 FEB 2025 to 20 MAR 2025