

WAAS CH <b>99526</b> <b>W33A</b>	APP CRS <b>328°</b>	Rwy Idg TDZE <b>546</b> Apt Elev <b>546</b>	<b>3125</b> <b>546</b> <b>546</b>
--	------------------------	---	---

# RNAV (GPS) RWY 33

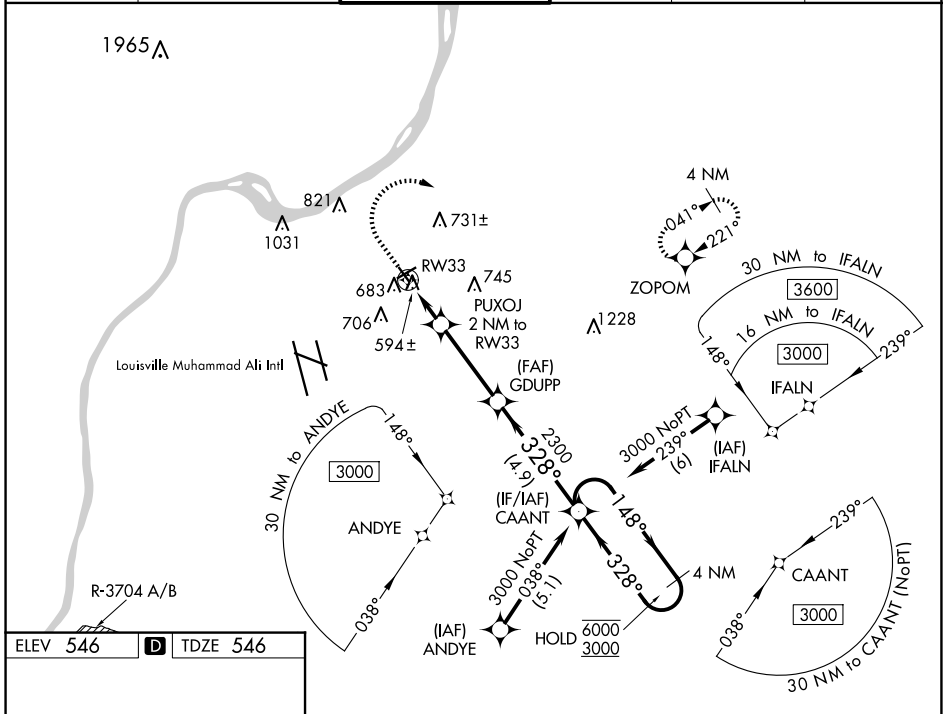
BOWMAN FLD (LOU)

RNP APCH - GPS.

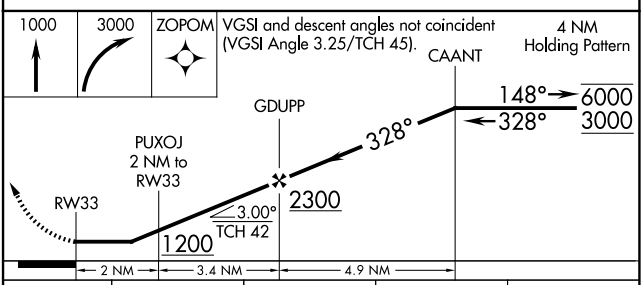
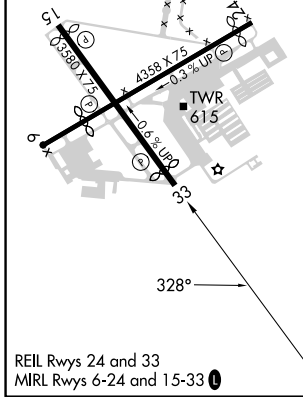
**▼** Rwy 33 helicopter visibility reduction below 1 SM NA. When local altimeter setting not received, use Louisville Muhammad Ali Intl altimeter setting.  
**▲** Straight-in Rwy 33 NA at night, Circling Rwy 6, 15, 33 NA at night.

MISSED APPROACH: Climb to 1000 then climbing right turn to 3000 direct ZOPOM and hold.

ATIS <b>124.15</b>	LOUISVILLE APP CON <b>132.075 327.0</b>	BOWMAN TOWER★ <b>119.5 (CTAF) 257.625</b>	GND CON <b>121.8</b>	CLNC DEL <b>118.9</b>	UNICOM <b>122.95</b>
-----------------------	--	--	-------------------------	--------------------------	-------------------------



ELEV 546	<b>D</b>	TDZE 546
----------	----------	----------



CATEGORY	A	B	C	D
LP MDA	860-1	314 (400-1)		NA
LNAV MDA	920-1	374 (400-1)		NA
<b>C</b> CIRCLING	1060-1 514 (600-1)	1080-1 534 (600-1)		NA

SE-1, 20 FEB 2025 to 20 MAR 2025

SE-1, 20 FEB 2025 to 20 MAR 2025