

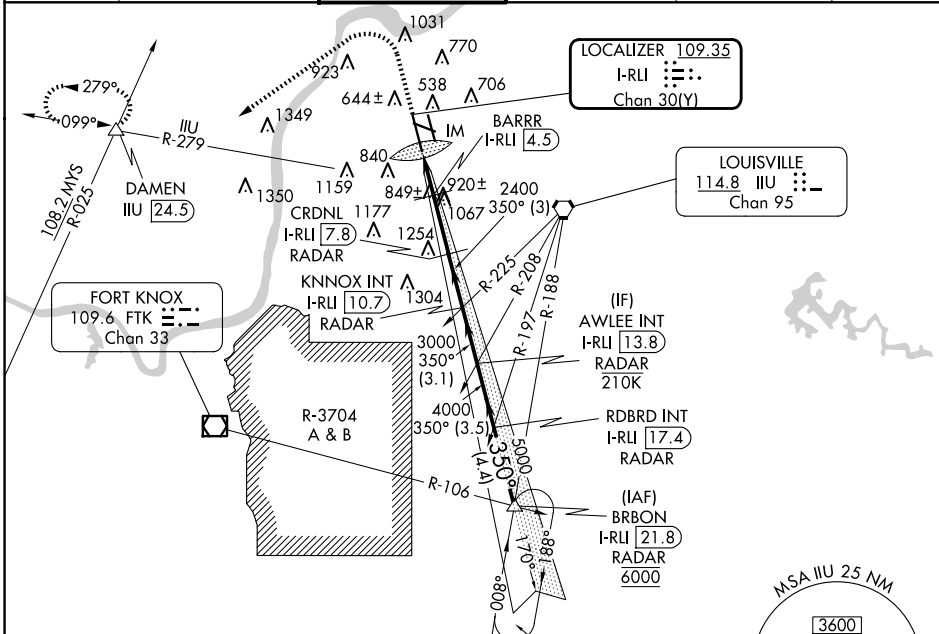
LOC/DME I-RLI 109.35	APP CRS 350°	Rwy Idg TDZE 10000 464
Chan 30 (Y)		Apt Elev 501

ILS or LOC RWY 35L

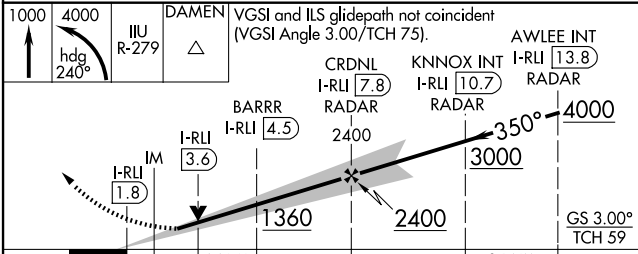
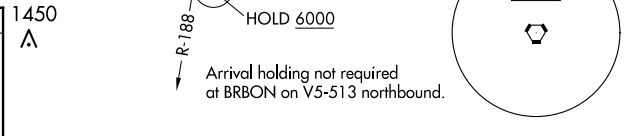
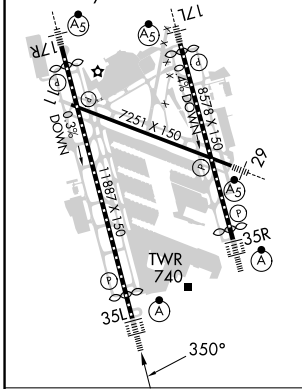
LOUISVILLE MUHAMMAD ALI INTL (SDF)

DME required for LOC only. RADAR required.		ALSF-2 	MISSED APPROACH: Climb to 1000 then climbing left turn to 4000 on heading 240° and IJU VORTAC R-279 to DAMEN INT/ IJU 24.5 DME and hold.
<p>▼ Simultaneous approach authorized. Circling Rwy 11 NA at night.</p> <p>▲ For inop ALS, increase S-LOC 35L Cat C/D visibility to 1 3/4 SM.</p>			

D-ATIS 118.725	LOUISVILLE APP CON 132.075 327.0	LOUISVILLE TOWER 124.2 257.8	GND CON 121.7 348.6	CLNC DEL 126.1 275.8	CPDLC
--------------------------	--	--	-------------------------------	--------------------------------	-------



ELEV 501	D	TDZE 464
TDZ/CL Rwy 17L, 17R, 35L, and 35R		
HIRL all Rwy		



CATEGORY	0.1	1.7	0.9 NM	3.3 NM	3 NM	C	3.1 NM	D
S-ILS 35L	664/18 200 (200-1/2)							
S-LOC 35L	1100/24 636 (600-1/2)		1100-1 3/4 636 (600-1 3/4)					
CIRCLING	1100-1 599 (600-1)		1140-1 639 (700-1)		1160-1 3/4 659 (700-1 3/4)		1400-3 899 (900-3)	

FAF to MAP 5.9 NM					
Knots	60	90	120	150	180
Min:Sec	5:54	3:56	2:57	2:22	1:58

SE-1, 20 FEB 2025 to 20 MAR 2025

SE-1, 20 FEB 2025 to 20 MAR 2025