


LOC RWY 29

LOUISVILLE MUHAMMAD ALI INTL (SDF')

LOC I-LKS 109.1	APP CRS 297°	Rwy Idg TDZE Apt Elev 7250 480 501
---------------------------	------------------------	--

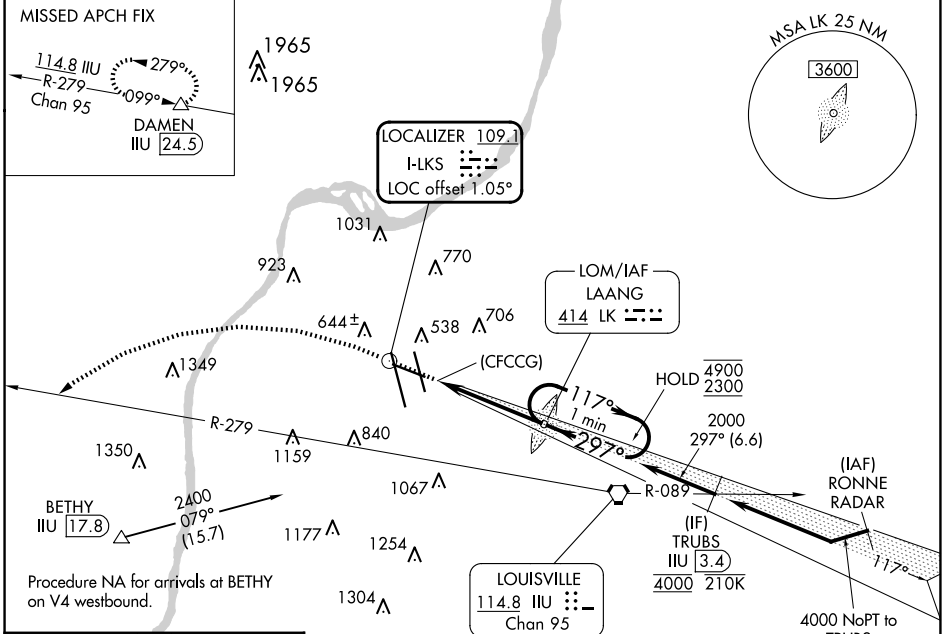
RADAR required. ADF or DME required.

⚠ Circling Rwy 11 NA at night. Rwy 29 helicopter visibility reduction below RVR 4000 NA. For inop ALS, increase S-29 visibility Cats A/B to RVR 5500 and Cats C/D to 1½ SM.

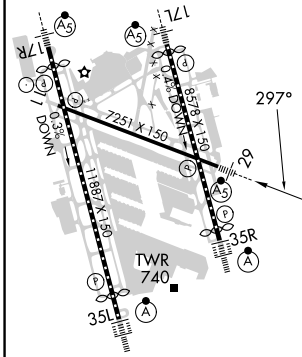
MALS R 

MISSED APPROACH: Climb to 1100 then climbing left turn to 4000 heading 268° and on ILL VORTAC R-279 to DAMEN and hold.

D-ATIS 118.725	LOUISVILLE APP CON 132.075 327.0	LOUISVILLE TOWER 124.2 257.8	GND CON 121.7 348.6	CLNC DEL 126.1 275.8	CPDLC
--------------------------	--	--	-------------------------------	--------------------------------	-------



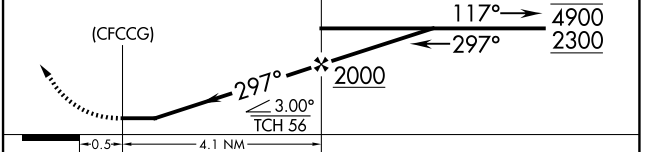
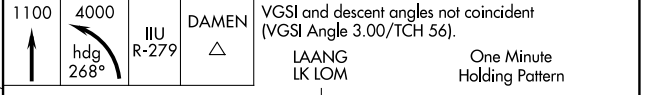
ELEV 501	D	TDZE 480
----------	----------	----------



HIRL all Rwy's
TDZ/CL Rwy's 17L, 17R, 35L, and 35R

FAF to MAP 4.1 NM

Knots	60	90	120	150	180
Min:Sec	4:06	2:44	2:03	1:38	1:22



CATEGORY	A	B	C	D
S-29	1060/40	580 (600-¾)	1060-1¼ 580 (600-1¼)	
C CIRCLING	1060-1 559 (600-1)	1140-1 639 (700-1)	1160-1¾ 659 (700-1¾)	1400-3 899 (900-3)

LOC RWY 29

SE-1, 20 FEB 2025 to 20 MAR 2025

SE-1, 20 FEB 2025 to 20 MAR 2025