

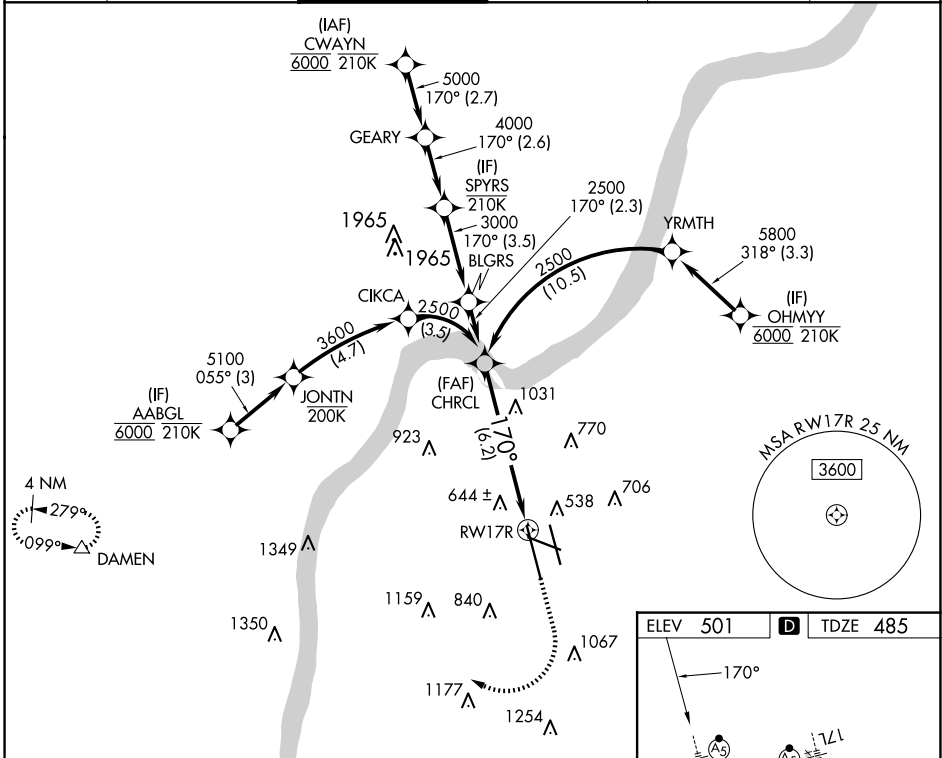
APP CRS	Rwy Idg	<b>10000</b>
<b>170°</b>	TDZE	<b>485</b>
	Apt Elev	<b>501</b>

# RNAV (RNP) Z RWY 17R

LOUISVILLE MUHAMMAD ALI INTL (SDF)

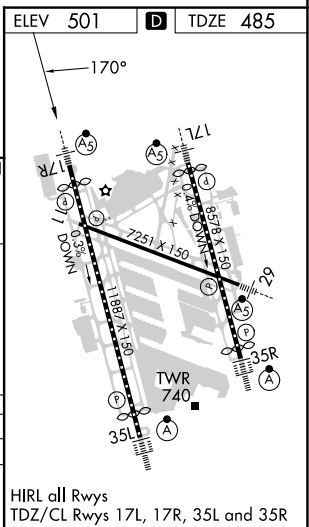
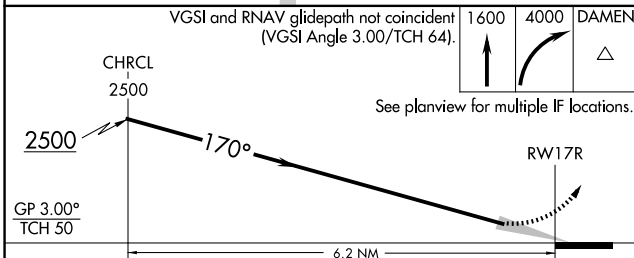
RNP AR APCH - GPS.		MALSR	MISSED APPROACH: Climb to 1600 then climbing right turn to 4000 direct DAMEN and hold.
<p>▼ For uncompensated Baro-VNAV systems, procedure NA below -13°C or above 54°C. Simultaneous approach authorized. For inop ALS, increase RNP 0.30 visibility all Cats to 1½ SM.</p>			

D-ATIS	LOUISVILLE APP CON	LOUISVILLE TOWER	GND CON	CLNC DEL	CPDLC
<b>118.725</b>	<b>132.075 327.0</b>	<b>124.2 257.8</b>	<b>121.7 348.6</b>	<b>126.1 275.8</b>	



SE-1, 20 FEB 2025 to 20 MAR 2025

SE-1, 20 FEB 2025 to 20 MAR 2025



CATEGORY	A	B	C	D
RNP 0.30 DA		974/50	489 (500-1)	

**AUTHORIZATION REQUIRED**