

# RNAV (RNP) Z RWY 29

LOUISVILLE MUHAMMAD ALI INTL (SDF)

APP CRS	Rwy Idg	<b>7250</b>
<b>296°</b>	TDZE	<b>480</b>
	Apt Elev	<b>501</b>

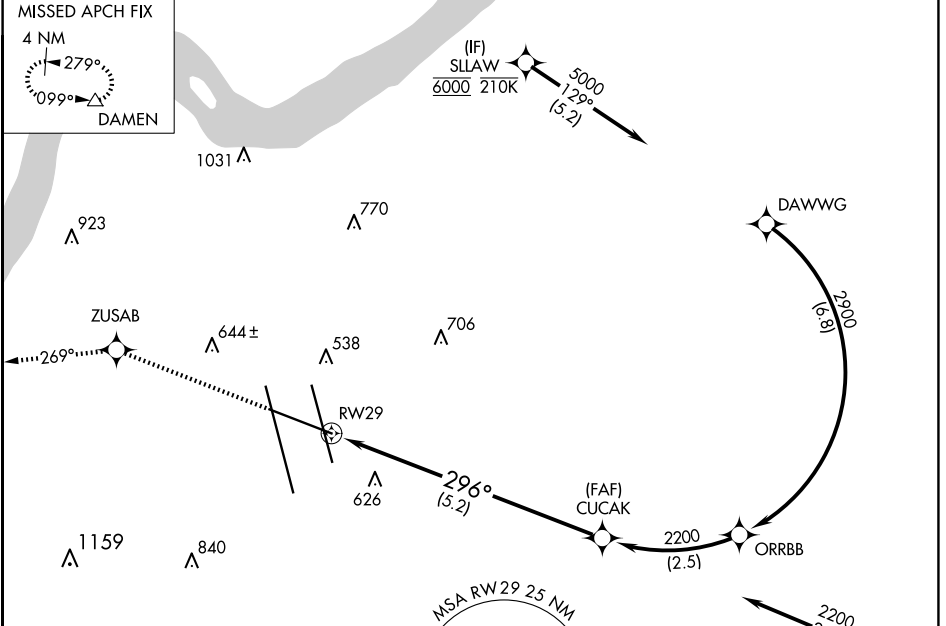
RNP AR APCH - GPS.

▼ For uncompensated Baro-VNAV systems, procedure NA below -13°C or above 54°C.

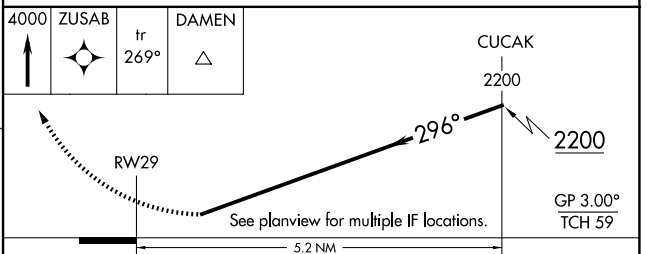
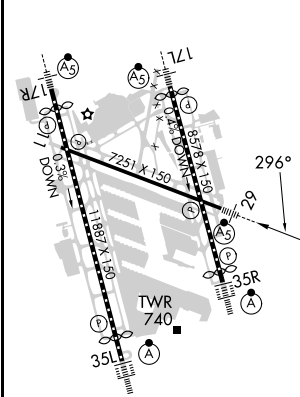
MALS

MISSED APPROACH: Climb to 4000 direct ZUSAB and on track 269° to DAMEN and hold.

D-ATIS	LOUISVILLE APP CON	LOUISVILLE TOWER	GND CON	CLNC DEL	CPDLC
<b>118.725</b>	<b>132.075 327.0</b>	<b>124.2 257.8</b>	<b>121.7 348.6</b>	<b>126.1 275.8</b>	



ELEV	501	D	TDZE	480
------	-----	---	------	-----



CATEGORY	A	B	C	D
RNP 0.30 DA	908/40 428 (500-¾)			

## AUTHORIZATION REQUIRED

SE-1, 20 FEB 2025 to 20 MAR 2025

SE-1, 20 FEB 2025 to 20 MAR 2025