

APP CRS	Rwy Idg	<b>7800</b>
<b>350°</b>	TDZE	<b>479</b>
	Apt Elev	<b>501</b>

# RNAV (RNP) Z RWY 35R

LOUISVILLE MUHAMMAD ALI INTL (SDF)

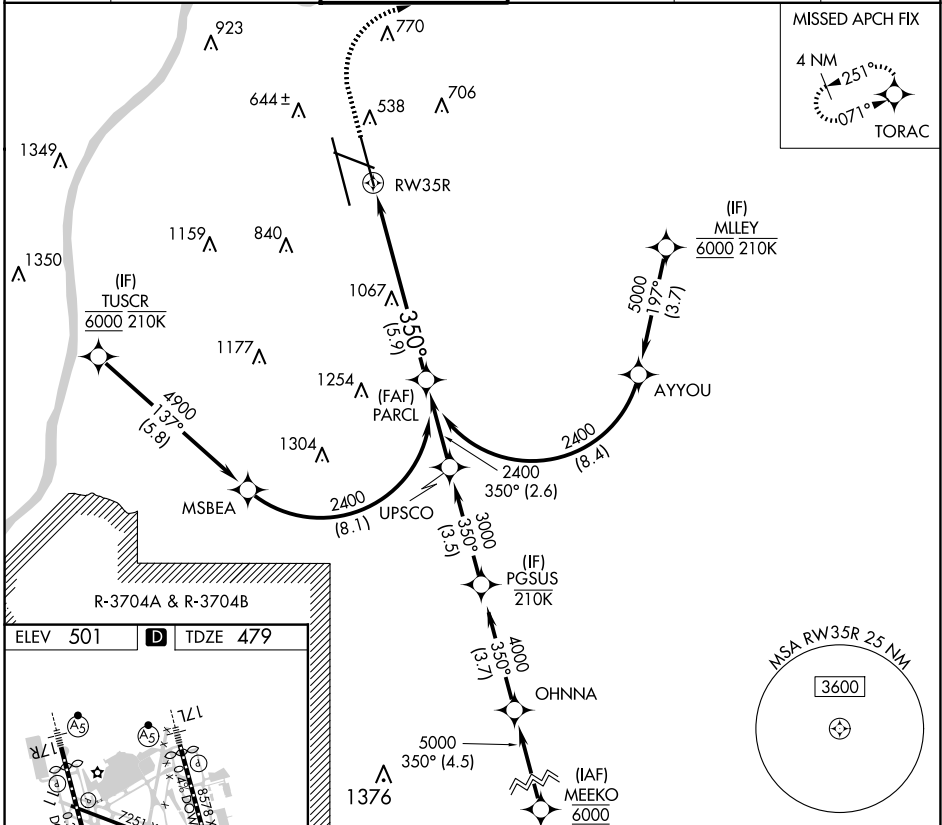
RNP AR APCH - GPS.

▼ For uncompensated Baro-VNAV systems, procedure NA below -13°C or above 54°C. For inop ALS, increase RNP 0.12 all Cats visibility to RVR 4500. Simultaneous approach authorized.

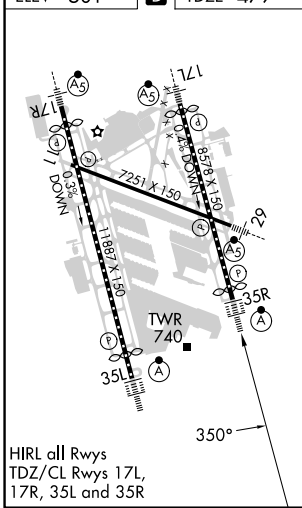
ALSF-2

MISSED APPROACH: Climb to 1600 then climbing right turn to 4000 direct TORAC and hold.

D-ATIS <b>118.725</b>	LOUISVILLE APP CON <b>132.075 327.0</b>	LOUISVILLE TOWER <b>124.2 257.8</b>	GND CON <b>121.7 348.6</b>	CLNC DEL <b>126.1 275.8</b>	CPDLC
--------------------------	--	--	-------------------------------	--------------------------------	-------

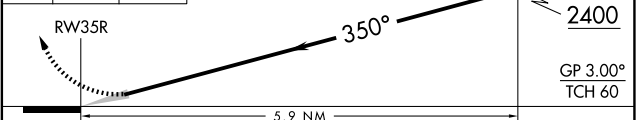


ELEV 501	<b>D</b>	TDZE 479
----------	----------	----------



HIRL all Rwys  
TDZ/CL Rwys 17L,  
17R, 35L and 35R

1600	4000	TORAC	VGSI and RNAV glidepath not coincident (VGSI Angle 3.00/TCH 71). See planview for multiple IF locations.	PARCL 2400
------	------	-------	--	------------



CATEGORY	A	B	C	D
RNP 0.12 DA		792/24	313 (300-1/2)	
RNP 0.30 DA		892/40	413 (400-3/4)	

**AUTHORIZATION REQUIRED**

SE-1, 20 FEB 2025 to 20 MAR 2025

SE-1, 20 FEB 2025 to 20 MAR 2025